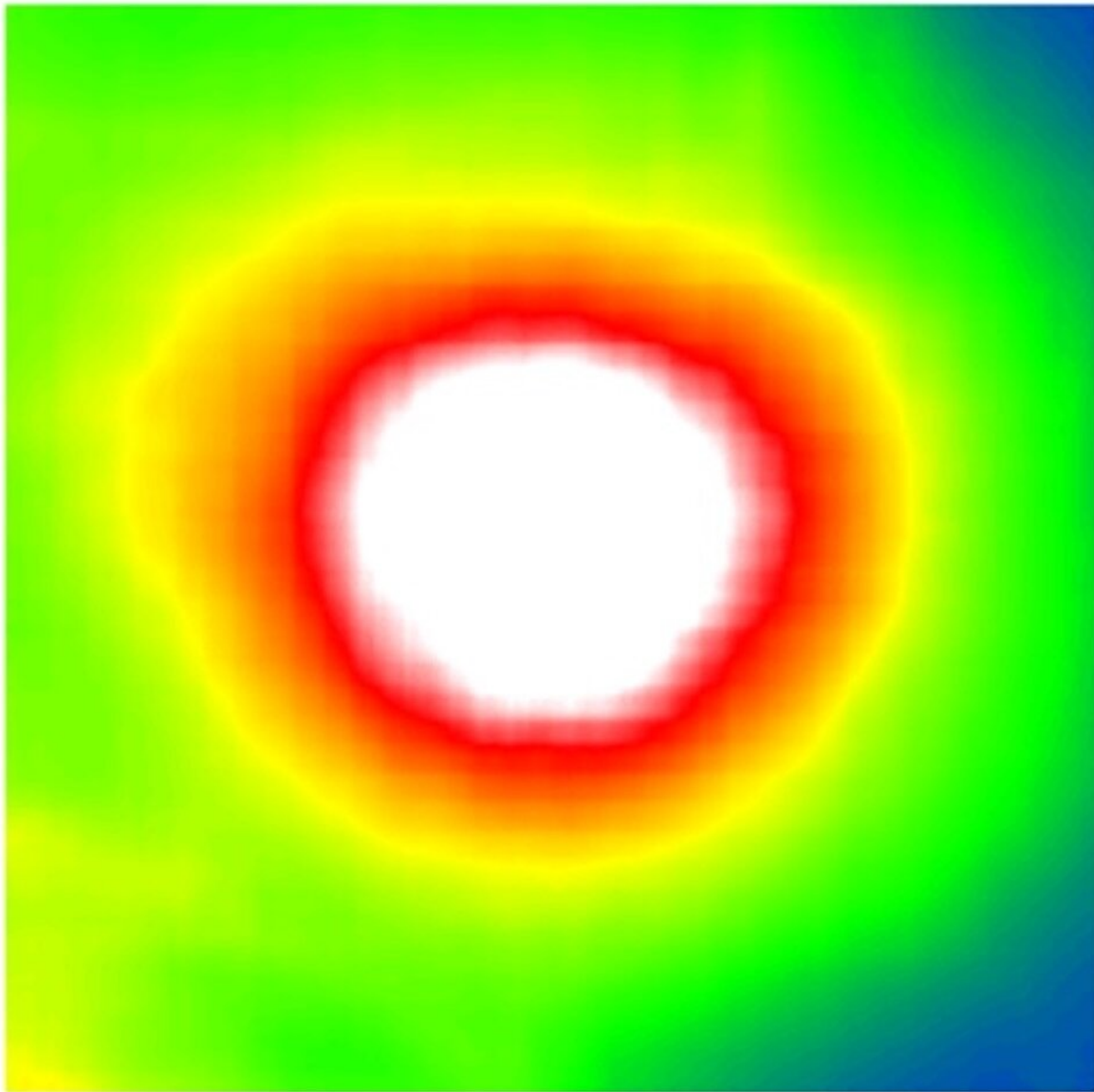


Novel deep learning method enables clinic-ready automated screening for diabetes-related eye disease

November 12 2020



Predicted retinal thickness on fundus images. Credit: Helmholtz Zentrum München

Researchers at Helmholtz Zentrum München together with LMU University Eye Hospital Munich and the Technical University of Munich (TUM) created a novel deep learning method that makes automated screenings for eye diseases such as diabetic retinopathy more efficient. Reducing the amount of expensive annotated image data that is required for the training of the algorithm, the method is attractive for clinics. In the use case of diabetic retinopathy, the researchers developed a screening algorithm that needs 75 percent less annotated data and achieves the same diagnostic performance of human experts.

In recent years, clinics have taken first steps towards artificial intelligence and deep learning to automate medical screenings. However, training a deep learning [algorithm](#) for accurate screening and diagnosis prediction requires large sets of annotated data and clinics often struggle with expensive expert labeling. Researchers were therefore looking for ways to reduce the need for costly annotated data while still maintaining the high performance of the algorithm.

Use case diabetic retinopathy

Diabetic retinopathy is a diabetes-related eye disease damaging the retina and can ultimately lead to blindness. Measuring the retinal thickness is an important procedure to diagnose the disease in risk patients. To do so, most clinics take photographs of the fundus—the surface of the back of the eye. In order to automate the screening of these images, clinics started to apply deep learning algorithms. These

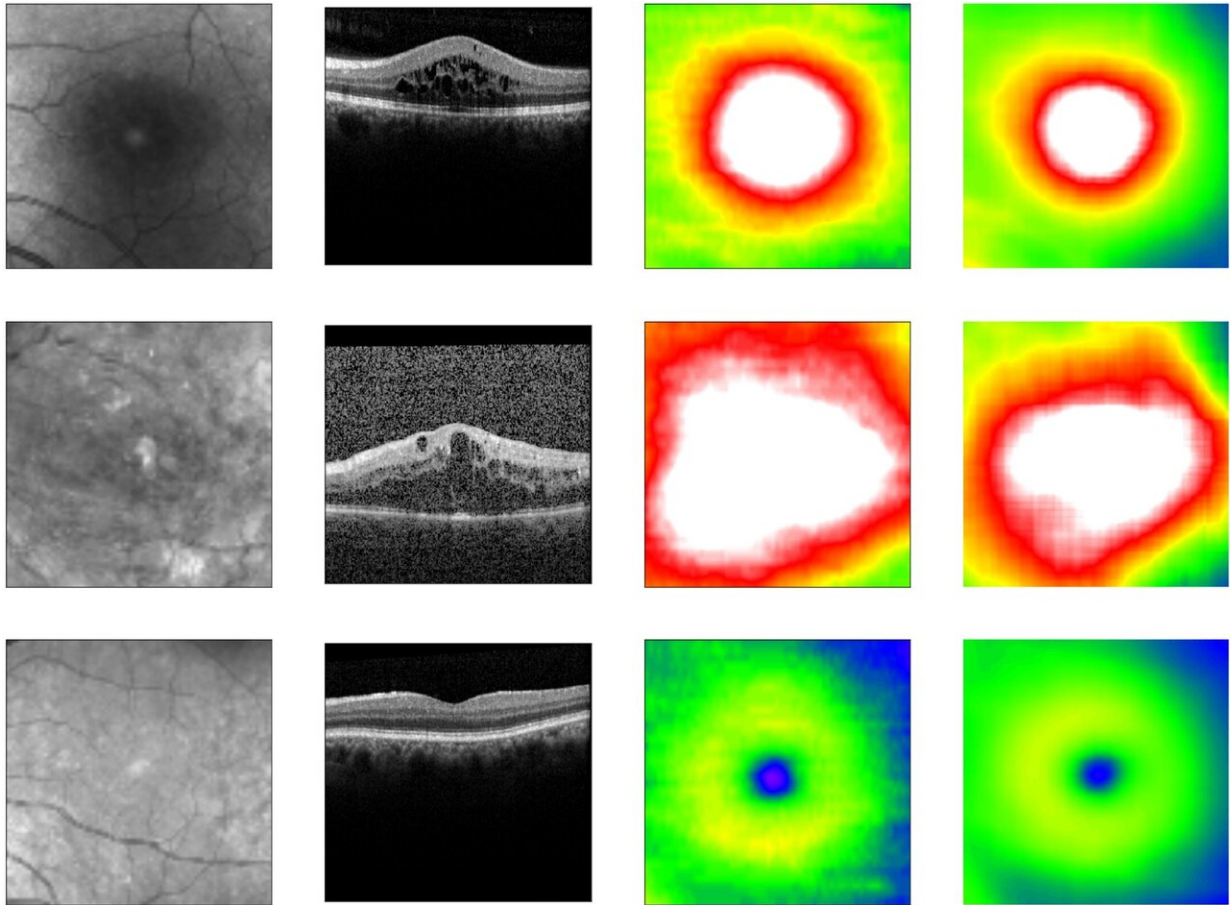
algorithms require large sets of fundus images with expensive annotations in order to be trained to screen correctly.

The LMU University Eye Hospital Munich owns a population-size data set containing over 120,000 unannotated fundus and co-registered OCT images. OCT (optical coherence tomography) allows for precise information about the retinal thickness but is not commonly available in every eye care center. The LMU provided their data to researchers from Helmholtz Zentrum München pioneering in the field of artificial intelligence in health.

Pre-training under 'self-supervision'

"Our goal was to use this uniquely large set of fundus and OCT images to develop a method which will reduce the need of expensive annotated data for algorithm training," says Olle Holmberg, first author of the study from Helmholtz Zentrum München and TUM School of Life Sciences.

The group of researchers developed a novel method called "cross modal self-supervised retinal thickness prediction" and applied it to pre-train a deep learning algorithm with the LMU data set. In this use case, cross modal self-supervised learning allowed the algorithm to teach itself to recognize unannotated fundus images with different OCT-derived retinal thickness profiles, predicting the thickness information directly from the fundus. By accurately predicting retinal thickness, a key diagnostic feature for diabetic retinopathy, the algorithm was then able to learn how to predict screening outcomes.



From left to right: Fundus image, OCT image, true retinal thickness, predicted retinal thickness. Credit: Helmholtz Zentrum München

High performance with a quarter of training data

This novel method shrunk the need for expensive annotated data to train the [deep learning](#) algorithm significantly. When applied in automated screenings for diabetes retinopathy, it achieved the same diagnostic performance, both, compared to previous algorithms which had required much more training data and compared to human experts.

"We reduced the need for annotated data by 75 percent," states Prof.

Fabian Theis, who led the study as Director of the Institute of Computational Biology at Helmholtz Zentrum München and Scientific Director of Helmholtz AI, the artificial intelligence platform of the Helmholtz Association. "Sparse annotated data is a grand challenge in medicine. It is one of our goals to develop methods that work with less data and that can then potentially be applied in many settings. Our use case in diabetic retinopathy is ready for immediate use in clinics and is a perfect example of how AI can improve the daily business of clinics and thus everybody's health."

"Automated detection and diagnosis of sight-impairing diabetic [retinopathy](#) with widely available fundus photography is a big improvement for screenings. Patient referrals to partly overcrowded specialized eye care centers could thus be reduced as well," says Dr. med. Karsten Kortuem, LMU University Eye Hospital Munich, who was responsible for the clinical side of this study.

Moreover, an additional reduction in size, meaning number of parameters, was achieved in the algorithm itself. The novel method enables up to 200 times smaller algorithms. This could be a crucial benefit to deploying them on mobile and embedded devices which is also important in clinical settings.

Applications beyond diabetic retinopathy

Beyond [diabetic retinopathy](#), the novel method allows for further clinical applications where much unannotated data is available but expert annotations are scarce, such as age-related macular degeneration (AMD).

More information: Olle G. Holmberg et al, Self-supervised retinal thickness prediction enables deep learning from unlabelled data to boost classification of diabetic retinopathy, *Nature Machine Intelligence* (2020). [DOI: 10.1038/s42256-020-00247-1](https://doi.org/10.1038/s42256-020-00247-1)

Provided by Helmholtz Association of German Research Centres

Citation: Novel deep learning method enables clinic-ready automated screening for diabetes-related eye disease (2020, November 12) retrieved 3 January 2024 from <https://medicalxpress.com/news/2020-11-deep-method-enables-clinic-ready-automated.html>

This document is subject to copyright. Apart from any fair dealing for the purpose of private study or research, no part may be reproduced without the written permission. The content is provided for information purposes only.