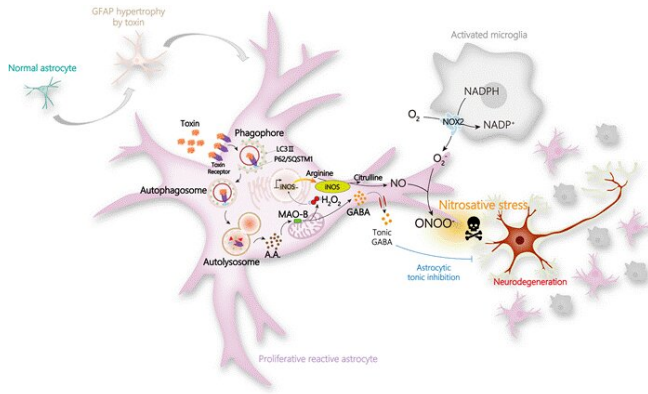


# Overly reactivated star-shaped cells explain the unpredictability of Alzheimer's disease

16 November 2020



Molecular mechanisms of severe reactive astrocytes-induced neurodegeneration in Alzheimer's disease. When astrocytes are exposed to toxic materials, such as amyloid plaques, their properties change, morphologically and functionally, and transform into reactive states. When the reactive astrocytes are severely induced, all the pathological features of Alzheimer's disease, including neurodegeneration, are precipitated. In this process, we found that the increase of MAO-B activity and the production of hydrogen peroxide play an important role in the progression of Alzheimer's disease. Credit: IBS/KIST

Though Alzheimer's disease (AD) is a common and fatal neurodegenerative brain disorder, most AD treatments are not making much headway in addressing its cause. Many AD drugs have targeted the elimination of beta-amyloid (A $\beta$ ) or amyloid plaques, which block cell-to-cell signaling at synapses. But some AD patients continue to show neurodegeneration and cognitive decline even after the removal of the amyloid plaques. Conversely, many people show no signs of neurodegeneration and cognitive impairment even in very high level of A $\beta$ . Also, it has never been precisely clear as to why the star-shaped non-neuronal cells, called astrocytes, change in their shapes and functions from the early onset of AD, and continue in such reactive states throughout the

AD progression.

Researchers at the Center for Cognition and Sociality, within the Institute for Basic Science (IBS) and Korea Institute of Science and Technology (KIST) have demonstrated that the severity of 'reactive astrocytes' is a key indicator for the onset of AD, raising profound implications for the current theory of AD mechanism. In its toxin-receptor-based [animal model](#), the research team fine-tuned astrocytic reactivity in vivo. They found that the mild reactive astrocytes can naturally reverse its reactivity, whereas severe reactive astrocytes can cause irreversible neurodegeneration, brain atrophy and cognitive deficits, all within 30 days. Notably, this severe-reactive-[astrocyte](#)-induced neurodegeneration was successfully replicated in virus-injected APP/PS1 mice, which have been widely known to lack neurodegeneration. These results indicate that severe reactive astrocytes are sufficient for neurodegeneration.

"This finding suggests experiences such as [traumatic brain injury](#), viral infection, and post-[traumatic stress disorder](#) might be necessary to transform a healthy brain to be vulnerable to Alzheimer's disease via excessive oxidative stress," says Director C. Justin Lee (at IBS), the study's corresponding author. "The excessive oxidative stress disables the body's ability to counteract the harmful effects of overproduced oxygen-containing molecules, subsequently transforming mild reactive astrocytes into neurotoxic severe reactive astrocytes," explains Dr. Lee. The team revealed that toxin-responsive astrocytes activate a cellular restoration mechanism (or autophagy-mediated degradation pathway) and increase hydrogen peroxide (H $_2$ O $_2$ ) by triggering monoamine oxidase B (MAO-B). MAO-B plays an important role in the reduction of dopamine that hinders the signal transmission to produce smooth, purposeful movement.

Such a mechanistic system results in morphological

hypertrophy of astrocytic processes followed by a cascade of neurodegenerative events: turning-on of the nitric oxide synthesizing enzyme iNOS, nitrosative stress, microglial activation and tauopathy. The research team verified that all of these events of the AD pathology were halted by a recently developed reversible MAO-B inhibitor, KDS2010 or a potent H<sub>2</sub>O<sub>2</sub> scavenger, AAD-2004. This reinforces that severe reactive astrocytes are the cause of neurodegeneration, not the result of it as previously assumed, notes Director Lee. Finally, these molecular features of the severe reactive astrocytes are commonly shared in various animal models of AD and in the brain of human AD patients.

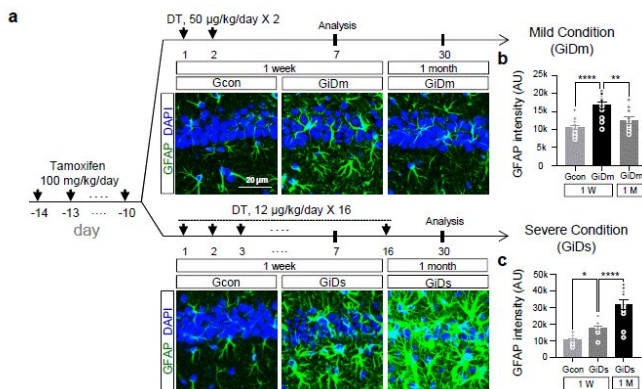
This study offers plausible explanations for why AD has been so unpredictable: neurodegeneration cannot be reversed once severe reactive astrocytes are on; and mild reactive astrocytes can be recovered unless being stretched by other pathological burdens. "Notably, this study suggests that an important step to establishing a new treatment strategy for Alzheimer's disease should be by targeting reactive astrocytes that appear to be overly activated in the early stages," says Dr. Ryu Hoon (at KIST), another corresponding author of the study. This should be accompanied by the development of the diagnostic tools for reactive astrocytes and early Alzheimer's disease, adds Dr. Ryu.

Dr. Chun Heejung (at IBS), the first author of the study says, "The reactive astrocytes are a general phenomenon occurring in various brain diseases such as Parkinson's disease and brain tumors, as well as Alzheimer's disease. Building upon this study, we have plans to expand our mechanistic insights of the reactivity-dependent neuronal death into other brain diseases for which treatment has not yet been developed."

The study is published in the journal *Nature Neuroscience*.

**More information:** Severe reactive astrocytes precipitate pathological hallmarks of Alzheimer's disease via H<sub>2</sub>O<sub>2</sub>? production, *Nature Neuroscience*. DOI: [10.1038/s41593-020-00735-y](https://doi.org/10.1038/s41593-020-00735-y), [www.nature.com/articles/s41593-020-00735-y](https://www.nature.com/articles/s41593-020-00735-y)

Provided by Institute for Basic Science



Mild and severe reactive astrocytes. Credit: IBS/KIST

APA citation: Overly reactivated star-shaped cells explain the unpredictability of Alzheimer's disease (2020, November 16) retrieved 27 May 2022 from <https://medicalxpress.com/news/2020-11-overly-reactivated-star-shaped-cells-unpredictability.html>

*This document is subject to copyright. Apart from any fair dealing for the purpose of private study or research, no part may be reproduced without the written permission. The content is provided for information purposes only.*