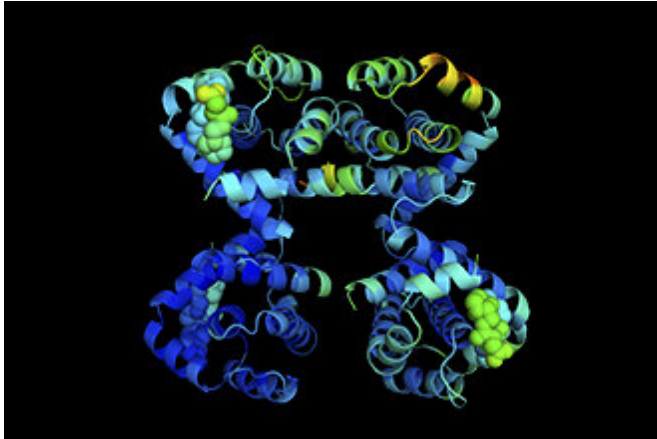


# Survival protein may prevent collateral damage during cancer therapy

25 November 2020



The cell survival protein BCL-XL may protect kidneys from damage caused by cancer therapies. Credit: Art of Science, Dr Michael Roy

WEHI researchers have identified a protein that could protect the kidneys from 'bystander' damage caused by cancer therapies.

The "cell survival protein," called BCL-XL, was required in laboratory models to keep [kidney](#) cells alive and functioning during exposure to chemotherapy or radiotherapy. Kidney damage is a common side effect of these widely used cancer therapies, and the discovery has shed light on how this damage occurs at the [molecular level](#).

Inhibiting BCL-XL has been proposed as a potential new [cancer therapy](#), and this research also revealed that in contrast to genetic deletion of BCL-XL, BCL-XL-inhibitory agents can be safely used in laboratory models alone or in combination with other cancer therapies. The research was led by Dr. Kerstin Brinkmann, Dr. Stephanie Grabow and Professor Andreas Strasser, and published today in the *EMBO Journal*.

## New strategy to investigate BCL-XL

BCL-XL is a widespread 'survival' protein, found in many different cell types—but also at high levels in a range of cancers. More than a decade ago, researchers at WEHI and overseas identified BCL-XL as a vital survival factor in oxygen-carrying [red blood cells](#), and platelets, the latter critical for blood clotting. However, the importance of BCL-XL in other cells of adults had not been investigated, said Dr. Grabow.

"To address this, we developed a new laboratory model in which the BCL-XL protein was permanently removed from all cells other than blood cells," Dr. Grabow said.

Using this strategy, the team explored whether BCL-XL helped cells to withstand a particularly stressful event—exposure to chemotherapy or radiotherapy, Dr. Brinkmann said.

"We discovered that without BCL-XL, kidney cells were highly susceptible to damage by both chemotherapy and radiotherapy. Healthy kidneys remove waste from our body, creating urine, but also maintain healthy numbers of red blood cells by releasing a hormone called erythropoietin (EPO). Without BCL-XL, the kidneys could not perform either of these vital functions," Dr. Brinkmann said.

"Kidney damage is a common side effect of anti-cancer therapies. Our discovery is the first to highlight the role of BCL-XL in protecting kidneys from this damage and may lead to better approaches to reduce this side effect for people undergoing cancer treatment," she said.

## Targeting BCL-XL to treat cancer

Cancer cells are kept alive in our bodies by high levels of survival proteins, such as BCL-XL. New BH3-mimetic drugs that inhibit specific survival proteins have shown great promise in clinical trials. Because BCL-XL is found at high levels in many cancer cells, there has been considerable interest

in this protein as a potential target for new anti-cancer agents, Professor Strasser said.

"Unfortunately, [early studies](#) showed that administering a BCL-XL inhibitory drug caused a loss of platelets, a serious side effect. To avoid this, the drug could only be administered at levels that, on their own, are not sufficient to efficiently kill cancer cells," he said.

The team investigated whether short-term inhibition of BCL-XL could be safely combined with other anti-cancer agents—in the hope that inhibition of BCL-XL may make cancer [cells](#) more susceptible to chemotherapy or radiotherapy.

"Because we had seen that permanently removing BCL-XL made [kidney cells](#) vulnerable to damage, we predicted that this would also occur if BCL-XL were only inhibited for a short period in a laboratory model," Professor Strasser said.

"We were thrilled to discover that a research compound that inhibits BCL-XL could be administered alone, or at a low dose even in combination with common chemotherapy drugs or radiation [therapy](#) without any evidence of [kidney damage](#) or other unwanted side effects.

"This suggests a potentially safe way to use candidate drugs that inhibit BCL-XL to treat cancer in clinical trials, even in combination with standard [cancer](#) therapies," Professor Strasser said.

**More information:** Kerstin Brinkmann et al. BCL-XL exerts a protective role against anemia caused by radiation-induced kidney damage, *The EMBO Journal* (2020). [DOI: 10.15252/embj.2020105561](#)

Provided by Walter and Eliza Hall Institute of Medical Research

APA citation: Survival protein may prevent collateral damage during cancer therapy (2020, November 25) retrieved 1 June 2022 from <https://medicalxpress.com/news/2020-11-survival-protein-collateral-cancer-therapy.html>

*This document is subject to copyright. Apart from any fair dealing for the purpose of private study or research, no*

*part may be reproduced without the written permission. The content is provided for information purposes only.*