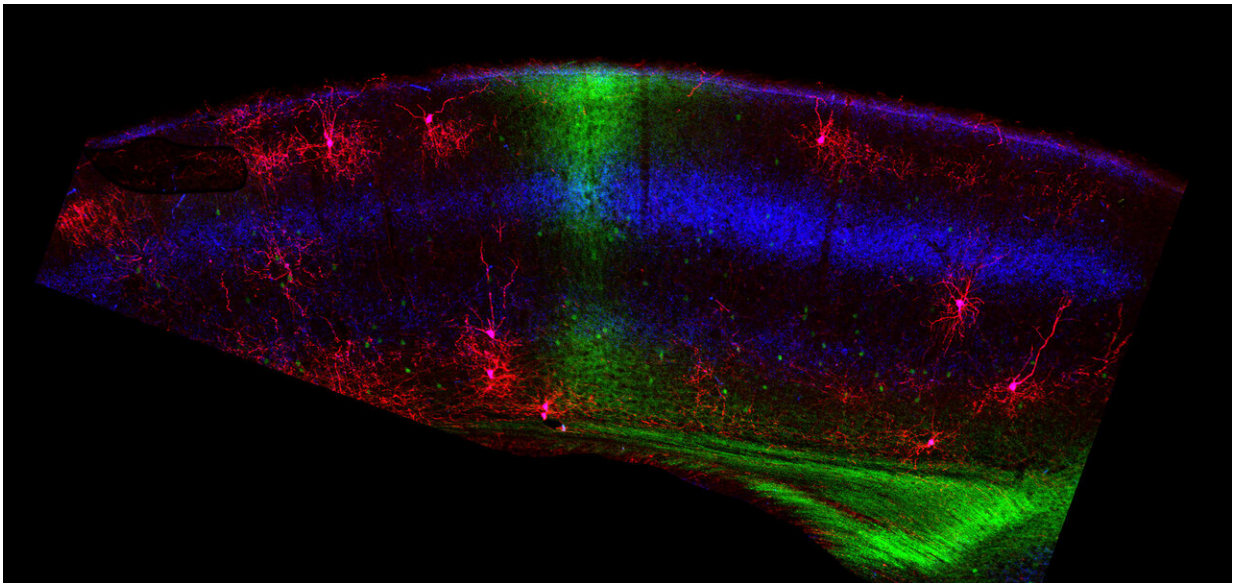


Brain clears the way for binocular vision even before eyes are open

December 7 2020



A portion of mouse visual cortex shows where the binocular zone is located (green). Chandelier cells are stained red in this image, and the blue is a marker that helped the researchers identify the visual cortex. Chandeliers are clearly less plentiful in the binocular zone. Credit: Bor-Shuen Wang, Cold Spring Harbor Lab

To prepare the brain for binocular vision and depth perception, first you have to take out some of the chandeliers.

That's the takeaway from a group of neurobiologists who studied the

development of binocular vision in the mouse brain. They discovered that chandelier cells, so-named because they have many long extensions that control the firing of hundreds of excitatory pyramidal neurons and resemble a chandelier light fixture, are selectively removed from the developing mouse visual cortex even before the animal's eyes are open by a process of programmed cell death called apoptosis.

This pruning of about half of the chandelier cells in the second week of development probably clears a path for certain pyramidal neurons to be more active, since chandeliers tend to have a dampening effect on their excitability, explained Josh Huang, a professor of neurobiology in the Duke University School of Medicine. He led this research at his previous position in Cold Spring Harbor Laboratory on Long Island, spearheaded by postdoctoral fellow Bor-Shuen Wang. The findings appear Dec. 7 in the journal *Neuron*.

"Binocular vision requires fast communication between the two visual hemispheres that receive information in the center visual field," Huang said. "What we think is that to allow that to happen, the area that mediates this fast communication needs to have reduced inhibition," accomplished via fewer inhibitory chandelier cells.

The binocular vision enjoyed by mammals like mice and humans is a collaboration of the physical abilities of the eyes and the interpretative abilities of the brain, Huang said. "Many animals (such as a lizard) can see with both eyes, but their processing of visual information from each eye is largely separate. Only in most mammals is there a central part of the visual world that is seen by both eyes and it is the brain that has to combine the left and right visual images into a coherent single perception."

Some of the binocular system is laid down by genetic instructions that build the structures of the visual pathways, but the finer visual circuits

are shaped by visual experience.

"The whole process of brain development is a continuous process in which genetic information plays a major role in constructing larger scaffold of the brain network," Huang said. "But later, there are learning- and experience-dependent processes that begin to customize many of the details of the brain circuits for each individual. The phenomenon we're talking about is right at the juncture between the genetic-instructed and use-dependent mechanisms," Huang said.

Adding to the complexity, the brain processes binocular vision in two different and coordinated ways, Huang said. As signals travel from the left and right retina to the thalamus, some signals cross to the other side of the brain, and others don't, but they converge in the visual cortex, thereby contributing to binocular vision. The second path is that the left and right visual cortexes, receiving information from the retina, communicate through callosal neurons via the corpus callosum, a connection between brain hemispheres. That further sharpens binocular vision.

In that second week after birth and before their eyes open, the retinas of the developing mouse generate waves of activity that help organize the visual cortex by reducing the density of the inhibitory chandelier cells. This is achieved by instructing the callosal neurons to literally kill half of the chandelier cells. The researchers showed that blocking those retinal inputs prevented chandelier cell pruning in the visual cortex.

When they experimentally prevented the chandelier pruning in some mice, those mice flunked a 3-D visual perception test, but otherwise seemed to see and behave normally. To confirm that the chandelier pruning is driven by retinal activity without any visual input, pups were raised in complete darkness. And the chandelier pruning still happened.

"Most likely, that killing of chandelier cells by callosal neurons is not random but is a step of proper binocular circuit assembly," Huang said. As young chandelier cells begin to form connections, those that form the "wrong connections" that may slow down the callosal pathway are likely to be selectively killed, while others that contribute to other aspects of visual processing are preserved. When pruning was blocked, a significant portion of the remaining chandelier cells appeared stunted. Those, he thinks, are the ones that would have been pruned.

More information: "Retinal and Callosal Activity-Dependent Chandelier Cell Elimination Shapes Binocularity in Primary Visual Cortex," Bor-Shuen Wang, Maria Sol Bernardez Sarria, An Xu, Miao He, Nazia M. Alam, Glen T. Prusky, Michael C. Crair, Z. Josh Huang. *Neuron* (2020). [DOI: 10.1016/j.neuron.2020.11.004](https://doi.org/10.1016/j.neuron.2020.11.004)

Provided by Duke University School of Nursing

Citation: Brain clears the way for binocular vision even before eyes are open (2020, December 7) retrieved 23 December 2022 from <https://medicalxpress.com/news/2020-12-problems-depth-perception-cells.html>

<p>This document is subject to copyright. Apart from any fair dealing for the purpose of private study or research, no part may be reproduced without the written permission. The content is provided for information purposes only.</p>
--