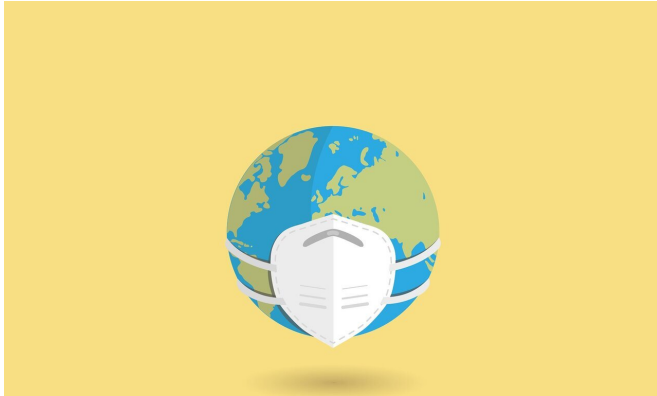


# Turkey adjusts coronavirus cases up to 1.75 million

10 December 2020



there is discussion of a possible four-day curfew during the New Year period.

Schools have been closed since November while restaurants and cafes can only provide takeaway service.

There is also a curfew between 1800 GMT and 0200 GMT on weekdays but doctors' groups and the opposition have called for stricter measures.

© 2020 AFP

Credit: Pixabay/CC0 Public Domain

Turkey has recorded nearly 1.75 million cases since the start of the pandemic, the health ministry said on Thursday, after releasing a significantly lower toll including only patients requiring medical care.

Officials had previously only published the number of [coronavirus](#) "patients" but last month returned to publishing the total number of [cases](#).

The Turkish Medical Association had warned that the daily number of cases was higher than the government's figures, an average of around 30,000 a week.

The [health ministry](#) said on Thursday there were 1,748,567 cases since the first confirmed infection in March, jumping from 955,956 announced earlier in the day.

The number of daily deaths also reached a record high on Thursday of 220, pushing the total to 15,751.

As the outbreak worsens, Ankara ordered the return of weekend lockdowns last weekend and

APA citation: Turkey adjusts coronavirus cases up to 1.75 million (2020, December 10) retrieved 24 April 2021 from <https://medicalxpress.com/news/2020-12-turkey-adjusts-coronavirus-cases-million.html>

*This document is subject to copyright. Apart from any fair dealing for the purpose of private study or research, no part may be reproduced without the written permission. The content is provided for information purposes only.*