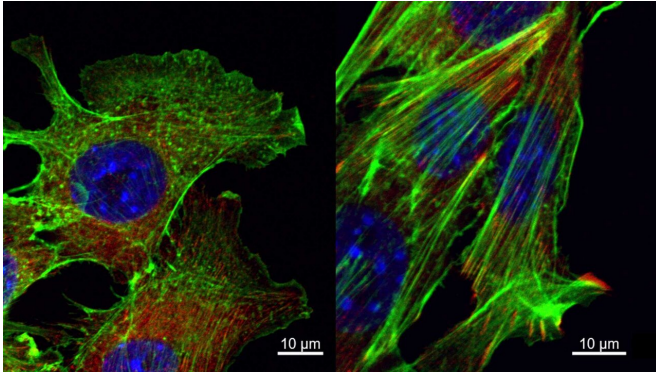


Regulatory RNAs promote breast cancer metastasis

22 December 2020



Certain regulatory RNAs are involved in cancer cell movement and metastases. On the right, cancer cells are on the move with long, stiff actin filaments (in green) acting like fingers to help it move. Paxillin (red) collects in patches on the cell's edge, sticking it to a surface. On the left, cells lacking one such regulatory RNA, MaTAR25, are flat. Actin filaments and paxillin are disrupted (speckles instead of filaments or patches), so cells are unable to move efficiently, reducing their ability to escape a tumor and metastasize. Credit: Kung-Chi Chang/Spector lab, 2020

Cold Spring Harbor Laboratory (CSHL) scientists have discovered a gene-regulating snippet of RNA that may contribute to the spread of many breast cancers. In animal experiments, the researchers could reduce the growth of metastatic tumors with a molecule designed to target that RNA and trigger its destruction. The same strategy, they say, could be used to develop a new breast cancer treatment for patients.

The study, led by CSHL Professor and Director of Research David Spector, was reported in the journal *Nature Communications*. In 2016, Spector and colleagues identified dozens of RNA [molecules](#) that were more prevalent in breast cancer [cells](#) than in noncancerous cells of the same type. All were long, non-coding RNAs

(lncRNAs)—RNA molecules that do not encode proteins and are thought to play various regulatory roles inside cells. The current study investigated how one of these, Mammary Tumor-Associated RNA 25 (MaTAR 25), impacted [breast cancer cells'](#) behavior in mice.

Experiments by Kung-Chi Chang, a [graduate student](#) in Spector's lab, indicate the molecule contributes to cancer's progression in several ways—revving up cells' growth as well as their ability to migrate and invade tissue. These effects may be due to changes in the activity of the *tensin1* gene, which the team found is one of MaTAR 25's targets. *Tensin1* helps connect a cell's internal cytoskeleton to the external matrix that surrounds it and is therefore positioned to influence a cell's movement as well as its growth-regulating pathways.

To eliminate MaTAR 25, the researchers designed a small piece of nucleic acid that recognizes and binds to its sequence. Once bound, that molecule, known as an antisense oligonucleotide, alerts an enzyme inside cells to destroy the lncRNA. When the researchers injected this molecule into the bloodstream of mice, it reached tumor cells and degraded most of the MaTAR 25, with dramatic effects. Spector said:

"When we did histology on the tumors, we found that they were very necrotic, meaning there was a lot of cell death after this RNA was degraded. And obviously, that's an important finding, but equally, if not more important, we found a very significant reduction in metastasis to the lungs. So this, you know, really gave us some very exciting data that this RNA molecule has some potential as a therapeutic target."

Spector's team found that high levels of an analogous RNA called LINC01271 are associated with more aggressive disease in patient breast tumors. They are now investigating whether an antisense oligonucleotide that targets LINC01271

can interfere with tumor growth and metastases in patient-derived [breast](#) cancer models.

More information: *Nature Communications* (2020). [DOI: 10.1038/s41467-020-20207-y](https://doi.org/10.1038/s41467-020-20207-y)

Provided by Cold Spring Harbor Laboratory

APA citation: Regulatory RNAs promote breast cancer metastasis (2020, December 22) retrieved 10 February 2021 from

<https://medicalxpress.com/news/2020-12-regulatory-rnas-breast-cancer-metastasis.html>

This document is subject to copyright. Apart from any fair dealing for the purpose of private study or research, no part may be reproduced without the written permission. The content is provided for information purposes only.