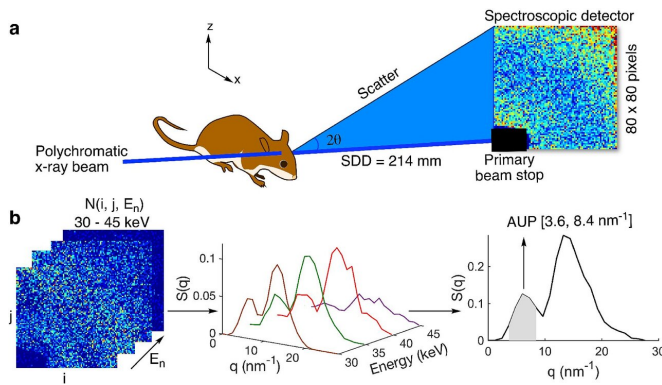


Researchers aim to advance understanding of Alzheimer's disease progression

24 December 2020



Schematic of the experimental sSAXS setup and data processing steps. (a) The mouse head is irradiated at select locations with a collimated beam of polychromatic X rays of 1 mm diameter. A 2D spectroscopic detector (CdTe) is used to collect SAXS data simultaneously in angle- and energy-dispersive modes for each location. The sample to detector distance (SDD) was 214 mm (b) sSAXS data processing steps in 30–45 keV energy range are illustrated using an amyloid model from BSA with two Bragg peaks at 6.04 and 13.24 nm⁻¹. The 2D detector data (left) showing counts in each pixel per energy bin is converted to scattering cross section, $S(q)$, per energy bin (middle) after applying a transmission correction. The $S(q)$ is then summed ($q=1.2\text{nm}^{-1}$ to $q=1.2\text{nm}^{-1}$) from 30 to 45 keV to combine scattering information in all energy bins and to calculate the area under the peak (AUP) from 3.6 to 8.4 nm⁻¹ (right). Credit: <https://www.nature.com/articles/s41598-020-77554-5/figures/1>

University of Maryland (UMD) and U.S. Food and Drug Administration (FDA) researchers are working together to develop a new X-ray based technique that has the potential to advance understanding of Alzheimer's disease in a preclinical stage. The group's immediate aim is to develop a noninvasive way to quickly measure the amount of amyloid plaque in the brain, which has been found to correspond with Alzheimer's disease progression. The researchers' work was recently

published in *Scientific Reports*.

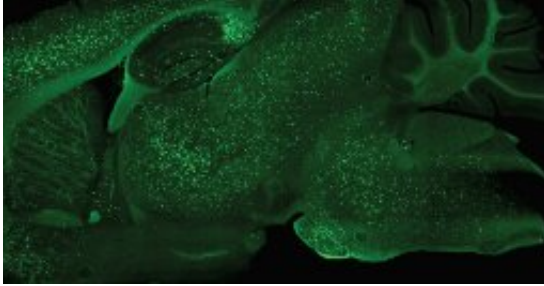
In a healthy human [brain](#), billions of specialized cells called neurons send information to one another via electrical and chemical signals in order to coordinate virtually all the body's functions. Alzheimer's [disease](#) disrupts these lines of communication, leading to a loss of function and cell death. These disruptions typically occur first in parts of the brain linked to memory, but over time, they affect areas that control language, reasoning, communication, mobility and other vital functions for living.

Scientists have long linked the accumulation of a protein fragment—[beta-amyloid](#)—in the brain to Alzheimer's disease. While there are still many questions surrounding what exactly causes [beta-amyloid](#) to form plaques in the brain, the ability to effectively measure this buildup could shed new light on disease progression and therapeutic approaches in patients.

"In this work, we used spectral X-ray techniques to capture the coherent X-ray scattering characteristic of beta-amyloid aggregates deep in the brain without the need for injecting imaging agents," said Fischell Department of Bioengineering (BIOE) adjunct professor Aldo Badano, corresponding author on the *Scientific Reports* paper. In addition to his BIOE appointment, Badano is a Deputy Director for the Division of Imaging, Diagnostics and Software Reliability with the FDA's Center for Devices and Radiological Health (CDRH) in the Office of Science and Engineering Laboratories (OSEL).

Current methods to measure this amyloid burden face significant shortcomings. Studies of amyloid burden in Alzheimer's disease are either limited to post-mortem analysis or they require use of resource-intensive PET or MRI scans that require injection of radiotracers or contrast agents. In addition, current methods for studying amyloid

burden in vivo lack the ability to deliver images with high enough specificity and resolution to enable a thorough understanding of disease progression.



Histology image of Alzheimer's disease in a mouse model showing amyloid plaques as bright green dots. Credit: University of Maryland

Recognizing this, Badano joined forces with BIOE alum Eshan Dahal (Ph.D. '20) and a team of UMD and FDA researchers to develop a novel technique to use small-angle X-ray scattering (SAXS) to estimate amyloid burden in the brain.

The team tapped SAXS for its ability to identify molecular structures based on their scattering patterns. Although SAXS is typically limited to the study of thin samples, the research group developed a way to apply a polychromatic X-ray beam and a 2-D spectroscopic detector to overcome the sample thickness limit of SAXS.

Early testing shows that their technique—known as spectral SAXS—can be used to effectively and noninvasively detect embedded targets in up to 5-cm-thick objects and in mouse models, all without the use of contrast agents. Their long-term hope is that one day clinicians will use this technique to assess how a patient's Alzheimer's disease has progressed by conducting an in-office scan of the brain that would take only a few minutes.

"With this spectral SAXS technology, we are aiming for histology-grade accuracy in terms of estimating amyloid burden in live animals, all within a matter of minutes and without using a contrast agent," said Eshan Dahal, first author of the *Scientific Reports* paper. "We demonstrated the method by studying a

well-established Alzheimer's disease [mouse model](#) with amyloid pathology in just five minutes per studied location in the brain without any special sample preparation needs or injection of contrast agents. With further research and development, there may be an opportunity to expand this method in both preclinical and clinical settings to estimate amyloid burden or any protein aggregates of interest."

The *Scientific Reports* paper is titled "Label-free X-ray estimation of brain amyloid burden."

More information: Eshan Dahal et al. Label-free X-ray estimation of brain amyloid burden, *Scientific Reports* (2020). [DOI: 10.1038/s41598-020-77554-5](https://doi.org/10.1038/s41598-020-77554-5)

Provided by University of Maryland

APA citation: Researchers aim to advance understanding of Alzheimer's disease progression (2020, December 24) retrieved 20 January 2021 from <https://medicalxpress.com/news/2020-12-aim-advance-alzheimer-disease.html>

This document is subject to copyright. Apart from any fair dealing for the purpose of private study or research, no part may be reproduced without the written permission. The content is provided for information purposes only.