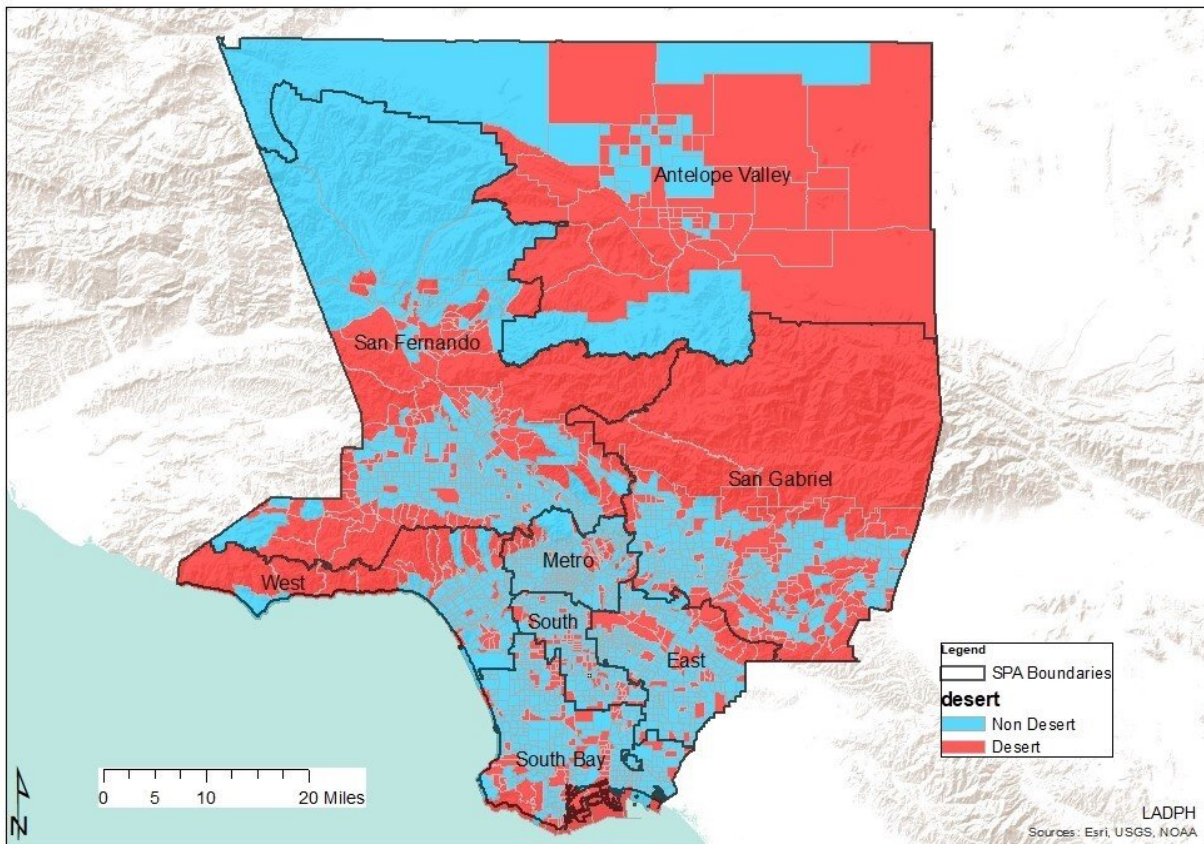


# Study first to link disparities and 'pharmacy deserts' in California

January 6 2021, by Nedda Bozorgmehri



This map identifies pharmacy deserts in Los Angeles County. Credit: Cheryl Wisseh

In the United States, Black, Latino and low-income communities have

historically lacked nearby access to pharmacy services. To provide the first record of these "pharmacy deserts" in Los Angeles County, a University of California, Irvine study identified communities where the nearest pharmacy was at least one mile away.

Unlike previous studies, this one describes [pharmacy](#) deserts in terms of social determinants of [health](#)—such as owning a vehicle, crime rates and poverty—to determine which communities have the greatest need for pharmacy access. Published in the *Journal of Racial and Ethnic Health Disparities*, it is the first study to look at pharmacy deserts in the state of California.

"My goal is to bring these concepts together at the intersection of pharmacy practice, [public health](#) and social justice to reduce health disparities," said Cheryl Wisseh, a health sciences assistant clinical professor of clinical pharmacy practice at UCI and the study's first author.

The study was conducted in collaboration with researchers at Charles R. Drew University of Medicine and Science in Los Angeles.

They found that some Los Angeles County areas lacking pharmacy access are characterized by denser populations, larger numbers of Latino and Black residents, less vehicle and home ownership, higher [crime rates](#), and greater poverty.

"These social determinants of health compound the negative effects of pharmacy shortage through competing needs," Wisseh said. "For example, some residents living below the poverty line may choose to forgo picking up their medications so that they can pay for food, rent and other necessities."

A pharmacy shortage likely equates to fewer clinical pharmacy services,

such as health screenings, vaccines and medication management, Wisseh added.

Since pharmacies are a large distributor of vaccines across the U.S., the COVID-19 pandemic makes access to pharmacists even more pressing.

"As the COVID-19 vaccines start rolling out, pharmacists will be key to the rapid and equitable distribution and administration of doses, just as they have been with COVID-19 testing," said Jan D. Hirsch, founding dean of the UCI's School of Pharmacy & Pharmaceutical Sciences.

Wisseh added that the communities within pharmacy deserts are particularly vulnerable to COVID-19.

"The same forces of structural inequity and systemic racism that contribute to the formation of Los Angeles pharmacy deserts contribute to the disproportionate test positivity, incidence and mortality rates of COVID-19 in racial and ethnic minorities," she said.

"Residents in Los Angeles County pharmacy deserts might benefit greatly from equitable, innovative, community-based interventions that increase access to medications, pharmacy services and pharmacists," the researchers wrote in the study. For instance, the county could add pharmacists to local clinics and other primary care settings to provide clinical services. In her own clinical practice, Wisseh works with county-led programs in South Los Angeles to improve pharmacy access for patients.

Wisseh plans to conduct a similar study on a larger scale—perhaps across California—to examine how pharmacy deserts contribute to whether minority communities take medications as prescribed and investigate disparities in available medications within pharmacies.

**More information:** Cheryl Wisseh et al. Social Determinants of Pharmacy Deserts in Los Angeles County, *Journal of Racial and Ethnic Health Disparities* (2020). [DOI: 10.1007/s40615-020-00904-6](https://doi.org/10.1007/s40615-020-00904-6)

Provided by University of California, Irvine

Citation: Study first to link disparities and 'pharmacy deserts' in California (2021, January 6) retrieved 4 February 2024 from <https://medicalxpress.com/news/2021-01-link-disparities-pharmacy-california.html>

This document is subject to copyright. Apart from any fair dealing for the purpose of private study or research, no part may be reproduced without the written permission. The content is provided for information purposes only.