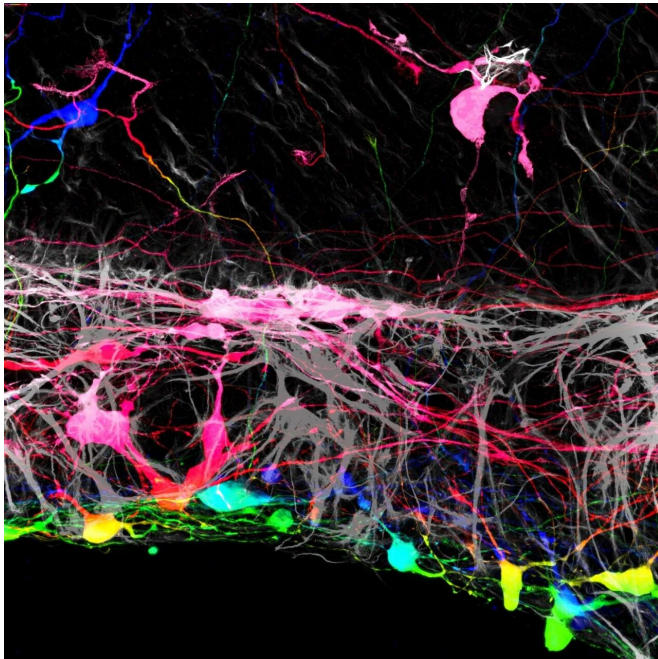


# A rift in the retina may help repair the optic nerve

14 January 2021



Transplanted retinal ganglion cells marked with a fluorescent tag. Credit: Thomas Johnson and Johns Hopkins Medicine

In experiments in mouse tissues and human cells, Johns Hopkins Medicine researchers say they have found that removing a membrane that lines the back of the eye may improve the success rate for regrowing nerve cells damaged by blinding diseases. The findings are specifically aimed at discovering new ways to reverse vision loss caused by glaucoma and other diseases that affect the optic nerve, the information highway from the eye to the brain.

"The idea of restoring vision to someone who has lost it from optic [nerve](#) disease has been considered science fiction for decades. But in the last five years, [stem cell biology](#) has reached a point where it's feasible," says Thomas Johnson, M.D., Ph.D., assistant professor of ophthalmology

at the Wilmer Eye Institute at the Johns Hopkins University School of Medicine.

The research was published Jan. 12 in the journal *Stem Cell Reports*.

A human eye has more than 1 million small [nerve cells](#), called retinal ganglion cells, that transmit signals from light-collecting cells called photoreceptors in the back of the eye to the brain. Retinal ganglion cells send out long arms, or axons, that bundle together with other retinal ganglion cell projections, forming the [optic nerve](#) that leads to the brain.

When the eye is subjected to high pressure, as occurs in glaucoma, it damages and eventually kills retinal ganglion cells. In other conditions, inflammation, blocked blood vessels, or tumors can kill retinal ganglion cells. Once they die, retinal ganglion cells don't regenerate.

"That's why it is so important to detect glaucoma early," says Johnson. "We know a lot about how to treat glaucoma and help nerve cells survive an injury, but once the cells die off, the damage to someone's vision becomes permanent."

Johnson is a member of a team of researchers at the Johns Hopkins Wilmer Eye Institute looking for ways scientists can repair or replace lost optic neurons by growing new cells.

In the current study, Johnson and his team grew mouse retinas in a laboratory dish and tracked what happens when they added human retinal ganglion cells, derived from human embryonic stem cells, to the surface of the mouse retinas. They found that most of the transplanted human cells were unable to integrate into the retinal tissue, which contains several layers of cells.

"The [transplanted cells](#) clumped together rather than dispersing from one another like on a living

[retina](#)," says Johnson.

However, the researchers found that a small number of transplanted retinal cells were able to settle uniformly into certain areas of the mouse retina. Looking more closely, the areas where the transplanted cells integrated well aligned with locations where the researchers had to make incisions into the mouse retinas to get them to lie flat in the culture dish. At these incision points, some of the transplanted cells were able to crawl into the retina and integrate themselves in the proper place within the tissue.

"This suggested that there was some type of barrier that had been broken by these incisions," Johnson says. "If we could find a way to remove it, we may have more success with transplantation."

It turns out that the barrier is a well-known anatomical structure of the retina, called the internal limiting membrane. It's a translucent connective tissue created by the retina's cells to separate the fluid of the eye from the retina.

After using an enzyme to loosen the connective fibers of the internal limiting membrane, the researchers removed the membrane and applied the transplanted [human cells](#) to the retinas. They found that most of the transplanted retinal ganglion cells grew in a more normal pattern, integrating themselves more fully. The transplanted cells also showed signs of establishing new nerve connections to the rest of the retinal structure when compared with retinas that had intact membranes.

"These findings suggest that altering the internal limiting membrane may be a necessary step in our aim to regrow new [cells](#) in damaged retinas," says Johnson.

The researchers plan to continue investigating the development of transplanted [retinal ganglion cells](#) to determine the factors they need to function once integrated into the retina.

**More information:** Kevin Y. Zhang et al. Role of the Internal Limiting Membrane in Structural Engraftment and Topographic Spacing of Transplanted Human Stem Cell-Derived Retinal

Ganglion Cells, *Stem Cell Reports* (2020). DOI: [10.1016/j.stemcr.2020.12.001](https://doi.org/10.1016/j.stemcr.2020.12.001)

Provided by Johns Hopkins University School of Medicine

APA citation: A rift in the retina may help repair the optic nerve (2021, January 14) retrieved 21 April 2021 from <https://medicalxpress.com/news/2021-01-rift-retina-optic-nerve.html>

*This document is subject to copyright. Apart from any fair dealing for the purpose of private study or research, no part may be reproduced without the written permission. The content is provided for information purposes only.*