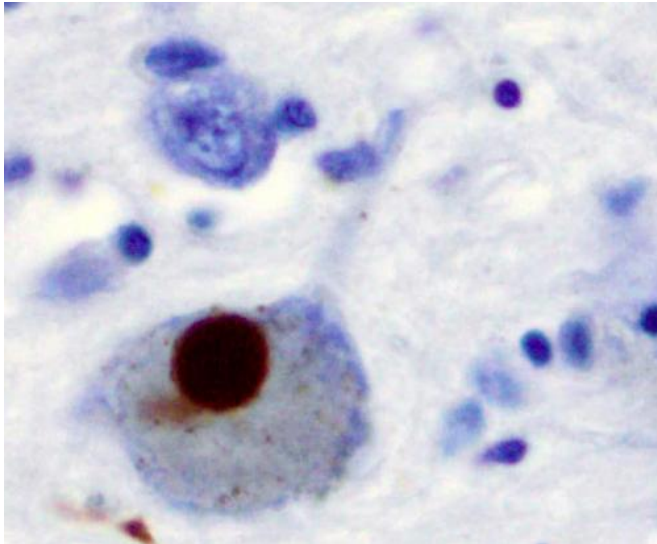


# Convincing evidence that type 2 diabetes is associated with increased risk of Parkinson's

8 March 2021



Immunohistochemistry for alpha-synuclein showing positive staining (brown) of an intraneural Lewy-body in the Substantia nigra in Parkinson's disease. Credit: Wikipedia

Research from Queen Mary University of London has concluded that there is convincing evidence that type 2 diabetes is associated with an increased risk of Parkinson's disease. The same study found that there was also evidence that type 2 diabetes may contribute to faster disease progression in patients who already have Parkinson's.

Treating people with drugs already available for type 2 [diabetes](#) may reduce the risk and slow the progression of Parkinson's. Screening for and early treatment of type 2 diabetes in patients with Parkinson's may be advisable.

Previous systematic reviews and meta-analyses have produced conflicting results around the link

between diabetes and the risk of Parkinson's disease. This new study, published in the *Movement Disorders Journal*, used meta-analysis of observational data and meta-analysis of genetic data to evaluate the effect of type 2 diabetes on risk and progression of Parkinson's [disease](#).

Corresponding author Dr. Alastair Noyce from Queen Mary University of London said: "This research brings together the results from many other studies to provide convincing evidence that type 2 diabetes likely affects not only Parkinson's risk, but also Parkinson's progression. There are many treatment strategies for type 2 diabetes, including prevention strategies, which may be re-purposed for the treatment of Parkinson's."

**More information:** Harneek Chohan et al, Type 2 Diabetes as a Determinant of Parkinson's Disease Risk and Progression, *Movement Disorders* (2021). [DOI: 10.1002/mds.28551](https://doi.org/10.1002/mds.28551)

Provided by Queen Mary, University of London

APA citation: Convincing evidence that type 2 diabetes is associated with increased risk of Parkinson's (2021, March 8) retrieved 23 September 2022 from <https://medicalxpress.com/news/2021-03-convincing-evidence-diabetes-parkinson.html>

*This document is subject to copyright. Apart from any fair dealing for the purpose of private study or research, no part may be reproduced without the written permission. The content is provided for information purposes only.*