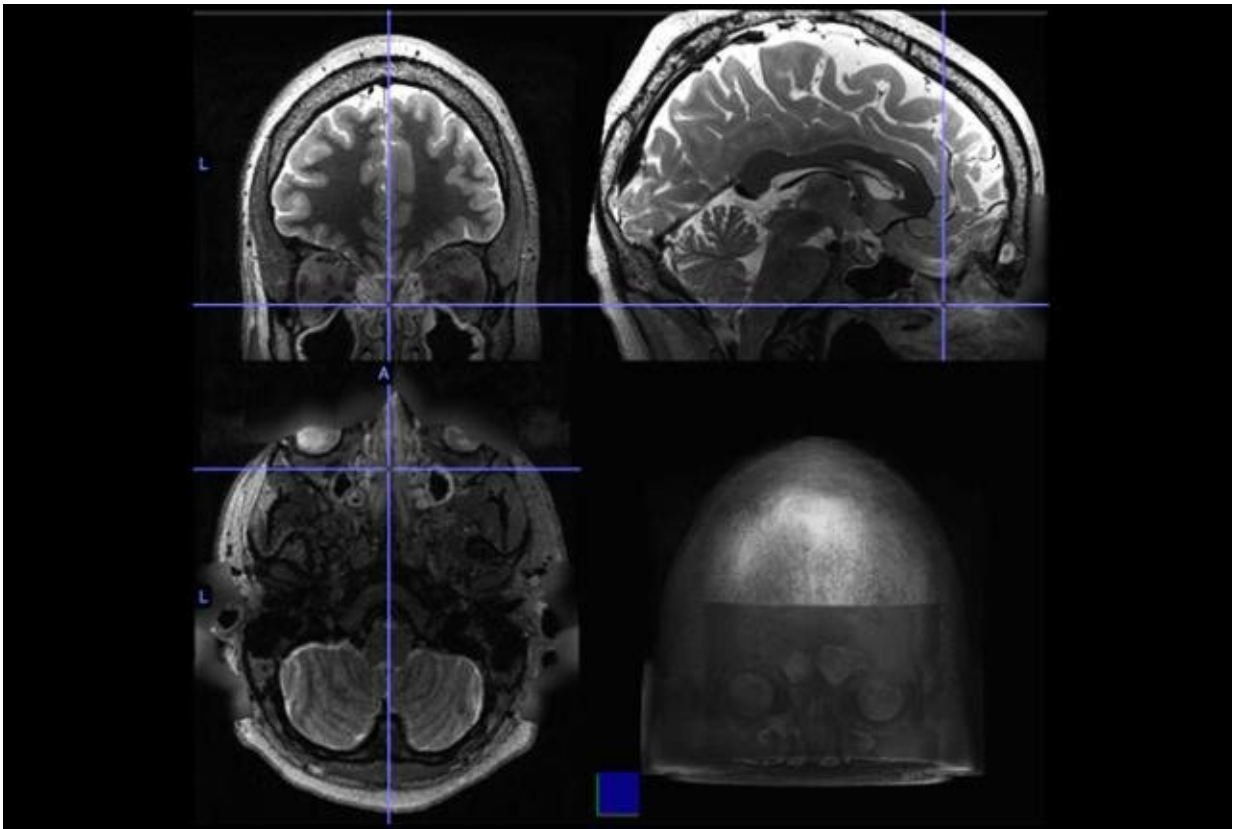


Chronic sinus inflammation appears to alter brain activity

April 8 2021



Magnetic resonance imaging scans whose crosshairs are fixed on a patient's nasal septum. Credit: Dr. Aria Jafari

The millions of people who have chronic sinusitis deal not only with stuffy noses and headaches, they also commonly struggle to focus, and

experience depression and other symptoms that implicate the brain's involvement in their illness.

New research links sinus [inflammation](#) with alterations in brain activity, specifically with the [neural networks](#) that modulate cognition, introspection and response to external stimuli.

The paper was published today in *JAMA Otolaryngology-Head & Neck Surgery*.

"This is the first study that links chronic sinus inflammation with a neurobiological change," said lead author Dr. Aria Jafari, a surgeon and assistant professor of Otolaryngology-Head & Neck Surgery at the University of Washington School of Medicine.

"We know from previous studies that patients who have sinusitis often decide to seek [medical care](#) not because they have a runny nose and sinus pressure, but because the disease is affecting how they interact with the world: They can't be productive, thinking is difficult, sleep is lousy. It broadly impacts their quality of life. Now we have a prospective mechanism for what we observe clinically."

Chronic rhinosinusitis affects about 11% of U.S. adults, according to the Centers for Disease Control and Prevention. The condition can necessitate treatment over a span of years, typically involving antibiotics. Repeated cycles of inflammation and repair thicken sinus tissues, much like calloused skin. Surgery may resolve the issue, but symptoms also can recur.

The researchers identified a study cohort from the Human Connectome Project, an open-access, brain-focused dataset of 1,206 healthy adults ages 22-35. Data included radiology image scans and cognitive/behavioral measurements.

The scans enabled them to identify 22 people with moderate or severe sinus inflammation as well as an age- and gender-matched control group of 22 with no sinus inflammation. Functional MRI (fMRI) scans, which detect cerebral blood flow and neuronal activity, showed these distinguishing features in the study subjects:

- decreased [functional connectivity](#) in the frontoparietal network, a regional hub for executive function, maintaining attention and problem-solving;
- increased functional connectivity to two nodes in the default-mode network, which influences self-reference and is active during wakeful rest and mind-wandering;
- decreased functional connectivity in the salience network, which is involved in detecting and integrating external stimuli, communication and social behavior.

The magnitude of brain-activity differences seen in the study group paralleled the severity of sinus inflammation among the subjects, Jafari said.

Despite the brain-activity changes, however, no significant deficit was seen in the behavioral and cognitive testing of study-group participants, said Dr. Kristina Simonyan, a study co-author. She is an associate professor of otolaryngology-head & [neck surgery](#) at Harvard Medical School and director of laryngology research at Massachusetts Eye and Ear.

"The participants with moderate and severe sinus inflammation were young individuals who did not show clinically significant signs of cognitive impairment. However, their brain scans told us a different story: The subjective feelings of attention decline, difficulties to focus or sleep disturbances that a person with sinus inflammation experiences might be associated with subtle changes in how brain regions controlling

these functions communicate with one another," said Simonyan.

It is plausible, she added, that these changes may cause more clinically meaningful symptoms if chronic sinusitis is left untreated. "It is also possible that we might have detected the early markers of a cognitive decline where sinus inflammation acts as a predisposing trigger or predictive factor," Simonyan said.

Jafari sees the study findings as a launch pad to explore new therapies for the disease.

"The next step would be to study people who have been clinically diagnosed with chronic sinusitis. It might involve scanning patients' brains, then providing typical treatment for sinus disease with medication or surgery, and then scanning again afterward to see if their [brain activity](#) had changed. Or we could look for inflammatory molecules or markers in patients' bloodstreams."

In the bigger picture, he said, the study may help ear-nose-throat specialists be mindful of the less-evident distress that many patients experience with chronic sinusitis.

"Our care should not be limited to relieving the most overt physical symptoms, but the whole burden of patients' disease."

More information: Aria Jafari et al. Association of Sinonasal Inflammation With Functional Brain Connectivity. *JAMA Otolaryngol Head Neck Surg*. Published online April 8, 2021. [DOI: 10.1001/jamaoto.2021.0204](https://doi.org/10.1001/jamaoto.2021.0204)

Provided by University of Washington

Citation: Chronic sinus inflammation appears to alter brain activity (2021, April 8) retrieved 14 February 2024 from <https://medicalxpress.com/news/2021-04-chronic-sinus-inflammation-brain.html>

This document is subject to copyright. Apart from any fair dealing for the purpose of private study or research, no part may be reproduced without the written permission. The content is provided for information purposes only.