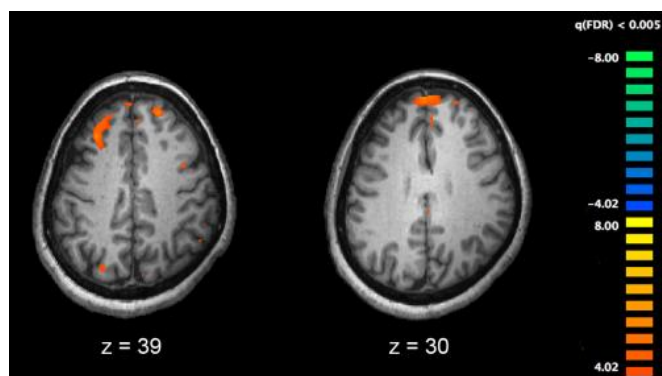


# Genetic predisposition to schizophrenia may increase risk of psychosis from cannabis use

13 April 2021



Functional magnetic resonance imaging (fMRI) and other brain imaging technologies allow for the study of differences in brain activity in people diagnosed with schizophrenia. The image shows two levels of the brain, with areas that were more active in healthy controls than in schizophrenia patients shown in orange, during an fMRI study of working memory. Credit: Kim J, Matthews NL, Park S./PLoS One.

It has been long been known that cannabis users develop psychosis more often than non-users, but what is still not fully clear is whether cannabis actually causes psychosis and, if so, who is most at risk. A new study published in *Translational Psychiatry* by researchers at the Centre for Addiction and Mental Health (CAMH) and King's College London helps shed light on both questions. The research shows that while cannabis users had higher rates of psychotic experiences than non-users across the board, the difference was especially pronounced among those with high genetic predisposition to schizophrenia.

"These results are significant because they're the first evidence we've seen that people genetically prone to psychosis might be disproportionately affected by cannabis," said lead author Dr. Michael

Wainberg, Scientist the Krembil Centre for Neuroinformatics at CAMH. "And because genetic risk scoring is still in its early days, the true influence of genetics on the cannabis-psychosis relationship may be even greater than what we found here."

Using data from the UK Biobank, a large-scale biomedical database containing participants' in-depth genetic and health information, the authors analyzed the relationship between genetics, cannabis use and psychotic experiences across more than 100,000 people. Each person reported their frequency of past cannabis use, and whether they had ever had various types of psychotic experiences, such as auditory or visual hallucinations. The researchers also scored each person's genetic risk for schizophrenia, by looking at which of their DNA mutations were more common among schizophrenia patients than among the general population.

Overall, people who had used cannabis were 50 per cent more likely to report psychotic experiences than people who had not. However, this increase was not uniform across the study group: among the fifth of participants with the highest [genetic](#) risk scores for schizophrenia, it was 60 per cent, and among the fifth with the lowest scores, it was only 40 per cent. In other words, people genetically predisposed to schizophrenia were at disproportionately higher risk for psychotic experiences if they also had a history of cannabis use.

Notably, because much less is known about the genetics of [schizophrenia](#) in non-white populations, the study's analysis was limited to self-reported white participants. "This study, while limited in scope, is an important step forward in understanding how [cannabis use](#) and genetics may

interact to influence psychosis risk," added senior author Dr. Shreejoy Tripathy, Independent Scientist at the Krembil Centre for Neuroinformatics, who supervised the study. "The more we know about the connection between cannabis and psychosis, the more we can inform the public about the potential risks of using this substance. This research offers a window into a future where genetics can help empower individuals to make more informed decisions about drug use."

**More information:** Michael Wainberg et al. Cannabis, schizophrenia genetic risk, and psychotic experiences: a cross-sectional study of 109,308 participants from the UK Biobank, *Translational Psychiatry* (2021). [DOI: 10.1038/s41398-021-01330-w](https://doi.org/10.1038/s41398-021-01330-w)

Provided by Centre for Addiction and Mental Health

APA citation: Genetic predisposition to schizophrenia may increase risk of psychosis from cannabis use (2021, April 13) retrieved 27 April 2021 from <https://medicalxpress.com/news/2021-04-genetic-predisposition-schizophrenia-psychosis-cannabis.html>

*This document is subject to copyright. Apart from any fair dealing for the purpose of private study or research, no part may be reproduced without the written permission. The content is provided for information purposes only.*