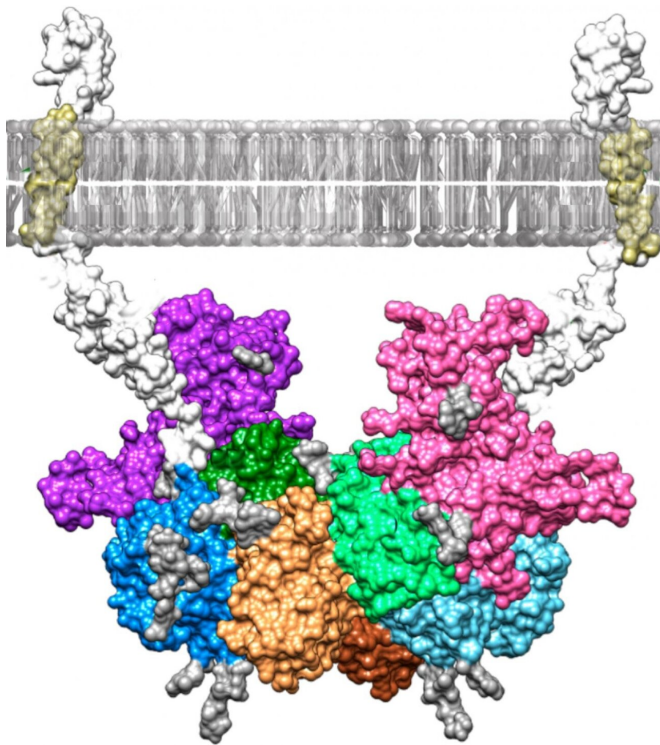


Inhibition of meprin ? enzyme, linked to the development of Alzheimer's disease, analyzed

20 April 2021



Model of the molecular complex that results when the blood plasma protein fetuin-B (purple and pink) binds with the enzyme meprin ? (other colors) Credit: Walter Stöcker

Researchers at Johannes Gutenberg University Mainz (JGU) in Germany and the Institute of Molecular Biology of Barcelona in Spain have discovered how the blood plasma protein fetuin-B binds to the enzyme meprin ? and used a computer model to visualize their findings. These results could lead to the development of new drugs to treat serious diseases such as Alzheimer's and cancer. Meprin ? releases proteins from cell membranes, thus controlling important physiological functions in the human body.

However, a dysregulation of this process can trigger the development of Alzheimer's and cancer. Meprin ? is regulated by fetuin-B binding to the enzyme when required, thereby preventing the release of other proteins. Presenting their findings in the journal *Proceedings of the National Academy of Sciences*, the researchers are now the first to describe this binding in detail.

The team at Mainz University produced both meprin ? and fetuin-B in insect cells and then allowed them to react with one other in a test tube. By means of measurement of [enzyme](#) kinetics and biophysical analyses, the researchers determined that this reaction resulted in an exceptionally stable, high-molecular-mass complex. Their colleagues in Barcelona subsequently managed to crystallize the complex and determine its three-dimensional structure using X-ray crystallography. This involved X-rays being fired at the [protein](#) crystals, which allowed the atomic structure of the crystals to be calculated from the diffraction of the X-rays. A [computer model](#) of the structure was then generated.

"Thanks to the model, we can now see exactly how meprin ? and fetuin-B bind together," said Professor Walter Stöcker, who conducted the research at JGU together with Dr. Hagen Körschgen and Nele von Wiegen. "This research represents an excellent starting point for gaining a better understanding of diseases such as Alzheimer's and for developing the drugs to combat them." Meprin ? is already known to be involved in the formation of so-called beta-amyloid plaques, which are a characteristic feature of the condition. Moreover, people with Alzheimer's disease have relatively little fetuin-B in their blood, which in turn may lead to a lack of regulation of meprin ?. "If it is possible to develop a drug that binds to the enzyme and inhibits it in a similar way to fetuin-B, this could be a new way of

treating Alzheimer's," concluded Stöcker.

More information: Ulrich Eckhard et al, The crystal structure of a 250-kDa heterotetrameric particle explains inhibition of sheddase meprin ? by endogenous fetuin-B, *Proceedings of the National Academy of Sciences* (2021). [DOI: 10.1073/pnas.2023839118](https://doi.org/10.1073/pnas.2023839118)

Provided by Universitaet Mainz

APA citation: Inhibition of meprin ? enzyme, linked to the development of Alzheimer's disease, analyzed (2021, April 20) retrieved 8 June 2022 from <https://medicalxpress.com/news/2021-04-inhibition-meprin-enzyme-linked-alzheimer.html>

This document is subject to copyright. Apart from any fair dealing for the purpose of private study or research, no part may be reproduced without the written permission. The content is provided for information purposes only.