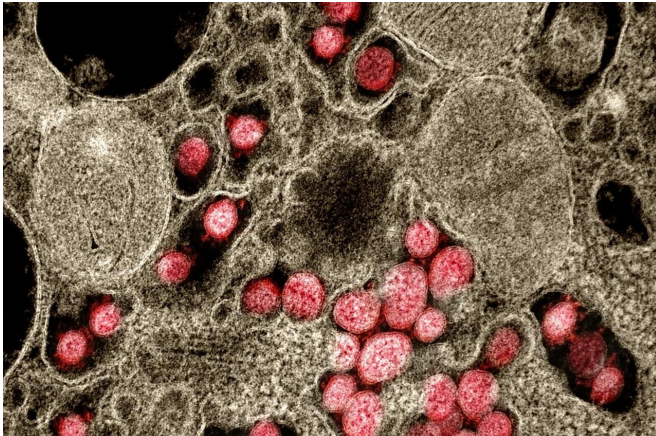


COVID-19: Large meta-analysis shows people with more advanced diabetes have higher risk of death from SARS-CoV-2

29 April 2021



Transmission electron micrograph of SARS-CoV-2 virus particles isolated from a patient. Credit: NIAID

to those found in the general population without diabetes. Men with diabetes were 28% more likely to die with COVID-19 than women with diabetes, and people aged over 65 with diabetes were more than three times more likely to die than those under that age with diabetes. With each 5-year increase in age, the relative risk for COVID-19 related death in people living with diabetes increased by 43%.

Only few of the 22 studies investigated diabetes-specific factors related to COVID-19, and the authors call for more studies into these factors to improve the strength of the evidence. The strongest associations were observed for [blood glucose levels](#) ≥ 11 mmol/l at admission and death, with an 8.6 times increased risk of death compared to

A new systematic review and meta-analysis published in *Diabetologia* (the journal of the European Association for the Study of Diabetes [EASD]) shows that patients with a more advanced course of diabetes have a higher risk of death when infected with SARS-CoV-2. The analysis includes 22 studies and 17,687 people and is by Dr. Sabrina Schlesinger, German Diabetes Center, Leibniz Center for Diabetes Research at Heinrich Heine University Düsseldorf, Germany, and colleagues.

This is the first edition of a 'living' [systematic review](#) and meta-analysis on [observational studies](#) investigating phenotypes in individuals with diabetes and COVID-19-related [death](#) and severity, which the authors will update periodically as new studies on diabetes and COVID-19 are published.

The review found that associations with COVID-19 related death in people with diabetes were similar

APA citation: COVID-19: Large meta-analysis shows people with more advanced diabetes have higher risk of death from SARS-CoV-2 (2021, April 29) retrieved 5 June 2022 from <https://medicalxpress.com/news/2021-04-covid-large-meta-analysis-people-advanced.html>

This document is subject to copyright. Apart from any fair dealing for the purpose of private study or research, no part may be reproduced without the written permission. The content is provided for information purposes only.