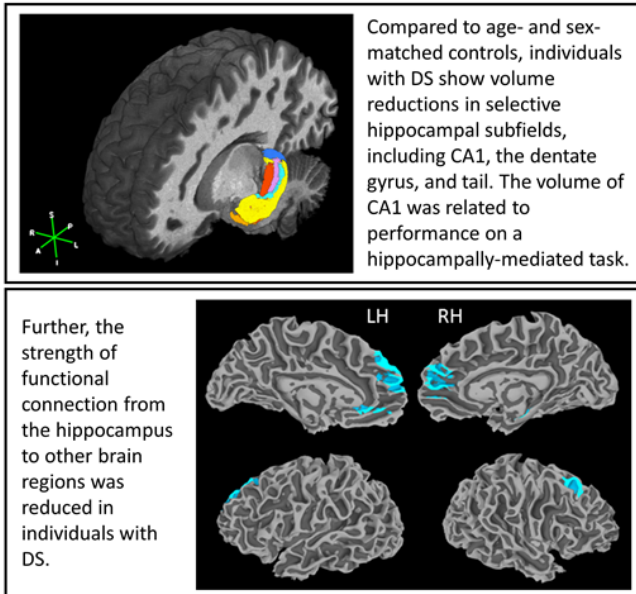


# Subtle differences in structure and function of the hippocampus in people with Down syndrome

29 April 2021

Young adults with Down syndrome (DS) show differences in hippocampal structure and function



objective technique to complement neuropsychological assessments to measure the functional skills of those with DS," said Alberto Costa, professor of pediatrics and psychiatry at the Case Western Reserve University School of Medicine and the study's senior author.

Their study was recently published in *Brain Communications*.

Down syndrome is a genetic condition typically caused by having an extra copy of chromosome 21. The extra chromosome changes how a baby's body and brain develop, which can cause mental and physical challenges throughout the person's life.

The intellectual and developmental disabilities of individuals with DS are typically generalized. In other words, although abilities can range widely among people with DS, different types of cognitive skills are usually affected in a similar way in the same person. However, for a given person with DS, cognitive abilities that are heavily dependent on the hippocampus are especially affected.

Credit: *Brain Communications* (2021). DOI: 10.1093/braincomms/fcab088

Using ultra-high field magnetic resonance imaging (MRI) to map the brains of people with Down syndrome (DS), researchers from Case Western Reserve University, Cleveland Clinic, University Hospitals and other institutions detected subtle differences in the structure and function of the hippocampus—a region of the brain tied to memory and learning.

Such detailed mapping, made possible by the high-powered MRI, is significant because it allowed the research team to better understand how each subregion of the hippocampus in people with DS is functionally connected to other parts of the brain.

"The ultimate goal of this approach is to have an

"That's why we focused on this structure deep inside the brain that is responsible for functions such as forming memories of episodes in one's life and spatial memory," Costa said.

MRI scanners at ultra-high magnetic field strengths are increasingly available for human research, allowing neuroscientists to map the [brain](#) at higher resolution without losing image clarity.

Taking advantage of the increased resolution afforded by high-powered MRI, the researchers performed the first in-vivo comparison of volumes of different anatomical segments of the hippocampus between people with DS and "control" individuals of the same age and sex

without DS.

"The gains in sensitivity and image resolution achievable with ultra-high field MRI provide levels of detail and accuracy that have not previously been attainable in studies of live, non-sedated individuals with Down syndrome," said Katherine Koenig, an assistant professor of radiology at the Cleveland Clinic Lerner College of Medicine of Case Western Reserve University and the study's first author.

"We also found significant relationships between the size of subregions of the hippocampus and cognitive measures," Costa said. "Although more work will be necessary to validate some of our findings, these results support the investigation of specific MRI measures as potential markers to study drug efficacy for possibly enhancing cognitive function in persons with Down syndrome."

**More information:** Katherine A Koenig et al. High resolution structural and functional MRI of the hippocampus in young adults with Down syndrome, *Brain Communications* (2021). DOI: [10.1093/braincomms/fcab088](https://doi.org/10.1093/braincomms/fcab088)

Provided by Case Western Reserve University

APA citation: Subtle differences in structure and function of the hippocampus in people with Down syndrome (2021, April 29) retrieved 5 July 2022 from <https://medicalxpress.com/news/2021-04-subtle-differences-function-hippocampus-people.html>

*This document is subject to copyright. Apart from any fair dealing for the purpose of private study or research, no part may be reproduced without the written permission. The content is provided for information purposes only.*