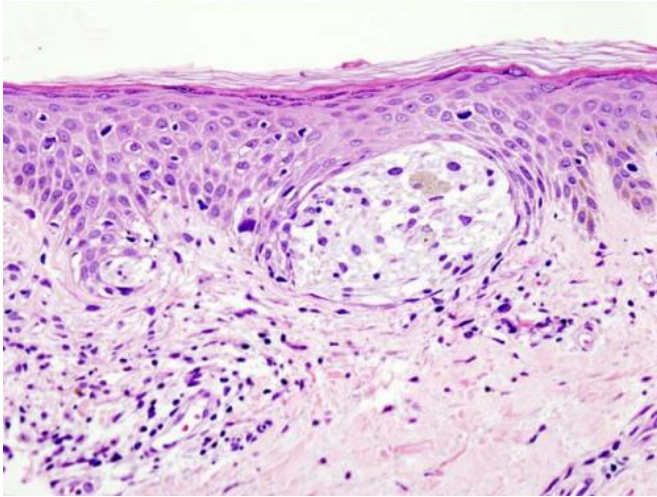


# Scientists reveal role of genetic switch in pigmentation and melanoma

18 May 2021



Melanoma in skin biopsy with H&E stain — this case may represent superficial spreading melanoma. Credit: Wikipedia/CC BY-SA 3.0

Despite only accounting for about 1 percent of skin cancers, melanoma causes the majority of skin cancer-related deaths. While treatments for this serious disease do exist, these drugs can vary in effectiveness depending on the individual.

A Salk study published on May 18, 2021, in the journal *Cell Reports* reveals new insights about a [protein](#) called CRTC3, a genetic switch that could potentially be targeted to develop new treatments for [melanoma](#) by keeping the switch turned off.

"We've been able to correlate the activity of this [genetic switch](#) to melanin production and cancer," says Salk study corresponding author Marc Montminy, a professor in the Clayton Foundation Laboratories for Peptide Biology.

Melanoma develops when pigment-producing [cells](#) that give skin its color, called melanocytes, mutate and begin to multiply uncontrollably. These

mutations can cause proteins, like CRTC3, to prompt the cell to make an abnormal amount of pigment or to migrate and be more invasive.

Researchers have known that the CRTC family of proteins (CRTC1, CRTC2, and CRTC3) is involved in pigmentation and melanoma, yet obtaining precise details about the individual proteins has been elusive. "This is a really interesting situation where different behaviors of these proteins, or genetic switches, can actually give us specificity when we start thinking about therapies down the road," says first author Jelena Ostojic, a former Salk staff scientist and now a principal scientist at DermTech.

The researchers observed that eliminating CRTC3 in mice caused a [color change](#) in the animal's coat color, demonstrating that the protein is needed for melanin production. Their experiments also revealed that when the protein was absent in melanoma cells, the cells migrated and invaded less, meaning they were less aggressive, suggesting that inhibiting the protein could be beneficial for treating the disease.

The team characterized, for the first time, the connection between two cellular communications (signaling) systems that converge on the CRTC3 protein in melanocytes. These two systems tell the cell to either proliferate or make the pigment melanin. Montminy likens this process to a relay race. Essentially, a baton (chemical message) is passed from one protein to another until it reaches the CRTC3 [switch](#), either turning it on or off.

"The fact that CRTC3 was an integration site for two signaling pathways—the relay race—was most surprising," says Montminy, who holds the J.W. Kieckhefer Foundation Chair. "CRTC3 makes a point of contact between them that increases specificity of the signal."

Next, the team plans to further investigate the

mechanism of how CTCF3 impacts the balance of melanocyte differentiation to develop a better understanding of its role in cancer.

**More information:** Jelena Ostojić et al, Transcriptional co-activator regulates melanocyte differentiation and oncogenesis by integrating cAMP and MAPK/ERK pathways, *Cell Reports* (2021). DOI: [10.1016/j.celrep.2021.109136](https://doi.org/10.1016/j.celrep.2021.109136)

Provided by Salk Institute

APA citation: Scientists reveal role of genetic switch in pigmentation and melanoma (2021, May 18) retrieved 22 May 2021 from <https://medicalxpress.com/news/2021-05-scientists-reveal-role-genetic-pigmentation.html>

*This document is subject to copyright. Apart from any fair dealing for the purpose of private study or research, no part may be reproduced without the written permission. The content is provided for information purposes only.*