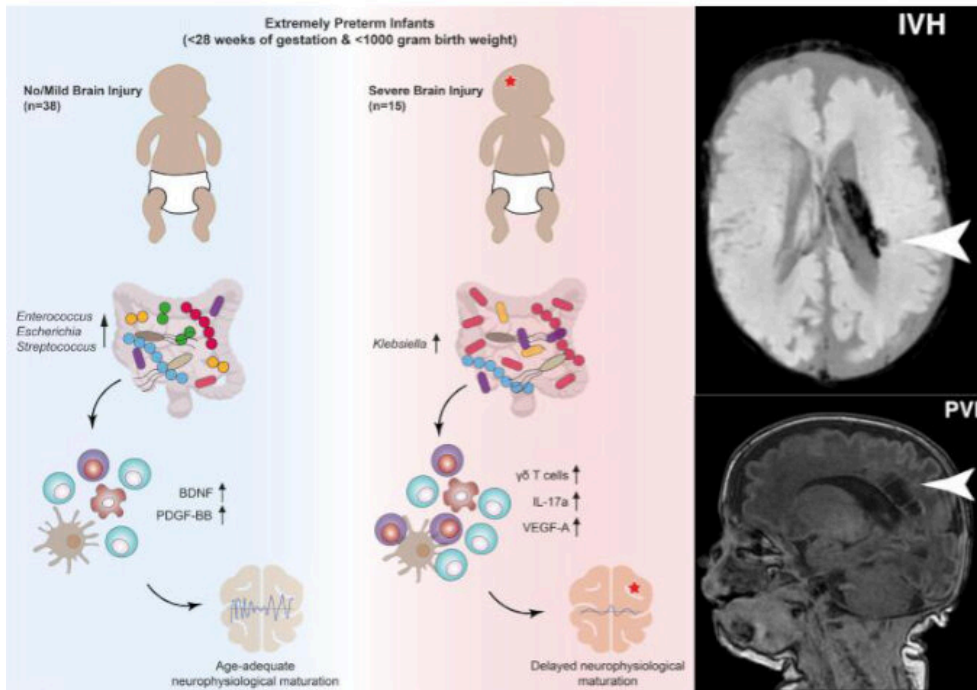


# Gut bacteria influence brain development

September 3 2021



Seki et al. have established a comprehensive, time-resolved profile of microbiota, immune, and neurophysiological development in premature infants. Their research linked early-life microbiome establishment to immunological and neurological development, identifying candidate biomarkers of perinatal brain injury. In summary (left), their results showed that pro-inflammatory T cell response correlates with suppressed electro-cortical maturation.  $\gamma\delta$  T cells seemed to have central implications for this suppression and the pathogenesis of brain injury. Furthermore, *Klebsiella* overgrowth in the gastrointestinal tract was highly predictive for brain damage. To the right, manifestations of such brain injuries are shown as representative cranial magnetic resonance (cMRI) images at term-equivalent age for intraventricular haemorrhage (IVH; upper right corner) and periventricular leukomalacia (PVL, lower right corner). Credit: Seki

et al., 2021

Extremely premature infants are at a high risk for brain damage. Researchers at the University of Vienna and the Medical University of Vienna have now found possible targets for the early treatment of such damage outside the brain: Bacteria in the gut of premature infants may play a key role. The research team found that the overgrowth of the gastrointestinal tract with the bacterium *Klebsiella* is associated with an increased presence of certain immune cells and the development of neurological damage in premature babies. The study is now published in journal *Cell Host & Microbe*.

## **Complex interplay: The gut-immune-brain axis**

The early development of the gut, the [brain](#) and the [immune system](#) are closely interrelated. Researchers refer to this as the gut-immune-brain axis. Bacteria in the gut cooperate with the immune system, which in turn monitors gut microbes and develops appropriate responses to them. In addition, the gut is in contact with the brain via the vagus nerve as well as via the immune system.

"We investigated the role this axis plays in the brain development of extreme preterm infants," says the first author of the study, David Seki. "The microorganisms of the gut microbiome—which is a vital collection of hundreds of species of bacteria, fungi, viruses and other microbes—are in equilibrium in healthy people. However, especially in premature babies, whose immune system and microbiome have not been able to develop fully, shifts are quite likely to occur. These shifts may result in negative effects on the brain," explains the microbiologist and immunologist.

## **Patterns in the microbiome provide clues to brain damage**

"In fact, we have been able to identify certain patterns in the microbiome and immune response that are clearly linked to the progression and severity of brain injury," adds David Berry, microbiologist and head of the research group at the Centre for Microbiology and Environmental Systems Science (CMESS) at the University of Vienna as well as Operational Director of the Joint Microbiome Facility of the Medical University of Vienna and University of Vienna. "Crucially, such patterns often show up prior to changes in the brain. This suggests a critical time window during which brain damage of extremely premature infants may be prevented from worsening or even avoided."

## **Comprehensive study of the development of extremely premature infants**

Starting points for the development of appropriate therapies are provided by the biomarkers that the interdisciplinary team was able to identify. "Our data show that excessive growth of the bacterium *Klebsiella* and the associated elevated  $\gamma\delta$ -T-cell levels can apparently exacerbate [brain damage](#)," explains Lukas Wisgrill, Neonatologist from the Division of Neonatology, Pediatric Intensive Care Medicine and Neuropediatrics at the Department of Pediatric and Adolescent Medicine at the Medical University of Vienna.

"We were able to track down these patterns because, for a very specific group of newborns, for the first time we explored in detail how the gut microbiome, the immune system and the brain develop and how they interact in this process," he adds. The study monitored a total of 60 [premature infants](#), born before 28 weeks gestation and weighing less

than 1 kilogram, for several weeks or even months. Using state-of-the-art methods—the team examined the microbiome using 16S rRNA gene sequencing, among other methods—the researchers analyzed blood and stool samples, brain wave recordings (e.g. aEEG) and MRI images of the infants' brains.

## Research continues with two studies

The study, which is an inter-university clusterproject under the joint leadership by Angelika Berger (Medical University of Vienna) and David Berry (University of Vienna), is the starting point for a research project that will investigate the [microbiome](#) and its significance for the neurological development of prematurely born children even more thoroughly. In addition, the researchers will continue to follow the children of the initial study.

"How the children's motoric and cognitive skills develop only becomes apparent over several years," explains Angelika Berger. "We aim to understand how this very early development of the gut-immune-brain axis plays out in the long term. " The most important cooperation partners for the project are already on board: "The children's parents have supported us in the study with great interest and openness," says David Seki. "Ultimately, this is the only reason we were able to gain these important insights. We are very grateful for that."

**More information:** David Seki et al, Aberrant gut microbiota-immune-brain axis development in premature neonates with brain damage, *Cell Host & Microbe* (2021), [DOI: 10.1016/j.chom.2021.08.004](https://doi.org/10.1016/j.chom.2021.08.004)

Provided by University of Vienna

Citation: Gut bacteria influence brain development (2021, September 3) retrieved 12 February 2024 from <https://medicalxpress.com/news/2021-09-gut-bacteria-brain.html>

This document is subject to copyright. Apart from any fair dealing for the purpose of private study or research, no part may be reproduced without the written permission. The content is provided for information purposes only.