

Researchers identify stem cell population key for bone regeneration

8 October 2021

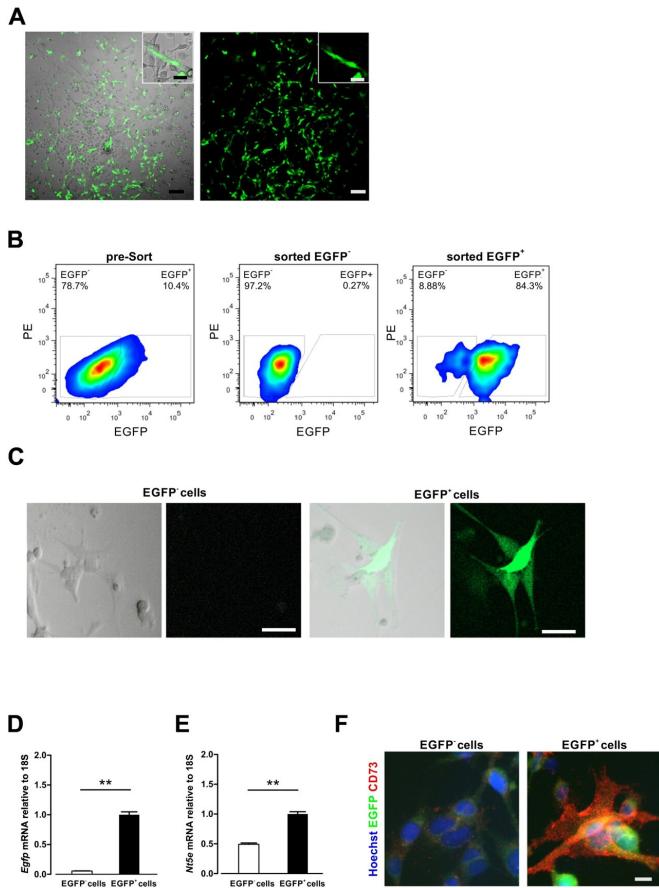


Fig. 1. Isolation and characterization of CD73-EGFP+ cells from BM. (A) EGFP+ colonies containing EGFP+ cells of primary BM cultures displayed typical MSC-like morphology at day 5 in culture. Scale bars 100 μ m, insets 10 μ m. (B) EGFP+ and EGFP- cell fractions were sorted by flow cytometry from passage 2 to 3 of a whole BM cell culture. (C) Sorted EGFP+ cells showed EGFP fluorescence at passage 5 in culture. Scale bars 10 μ m. (D, E) Cultured EGFP+ cells preserved EGFP (D) and Nt5e (CD73) (E) expression at passage 6 in culture as assessed by realtime PCR. (F) Anti-CD73 staining revealed CD73 expression in EGFP+ cells. Scale bar 10 μ m. n = 3, two-sided t-test, **: P

APA citation: Researchers identify stem cell population key for bone regeneration (2021, October 8) retrieved 21 October 2022 from <https://medicalxpress.com/news/2021-10-stem-cell-population-key-bone.html>

This document is subject to copyright. Apart from any fair dealing for the purpose of private study or research, no part may be reproduced without the written permission. The content is provided for information purposes only.