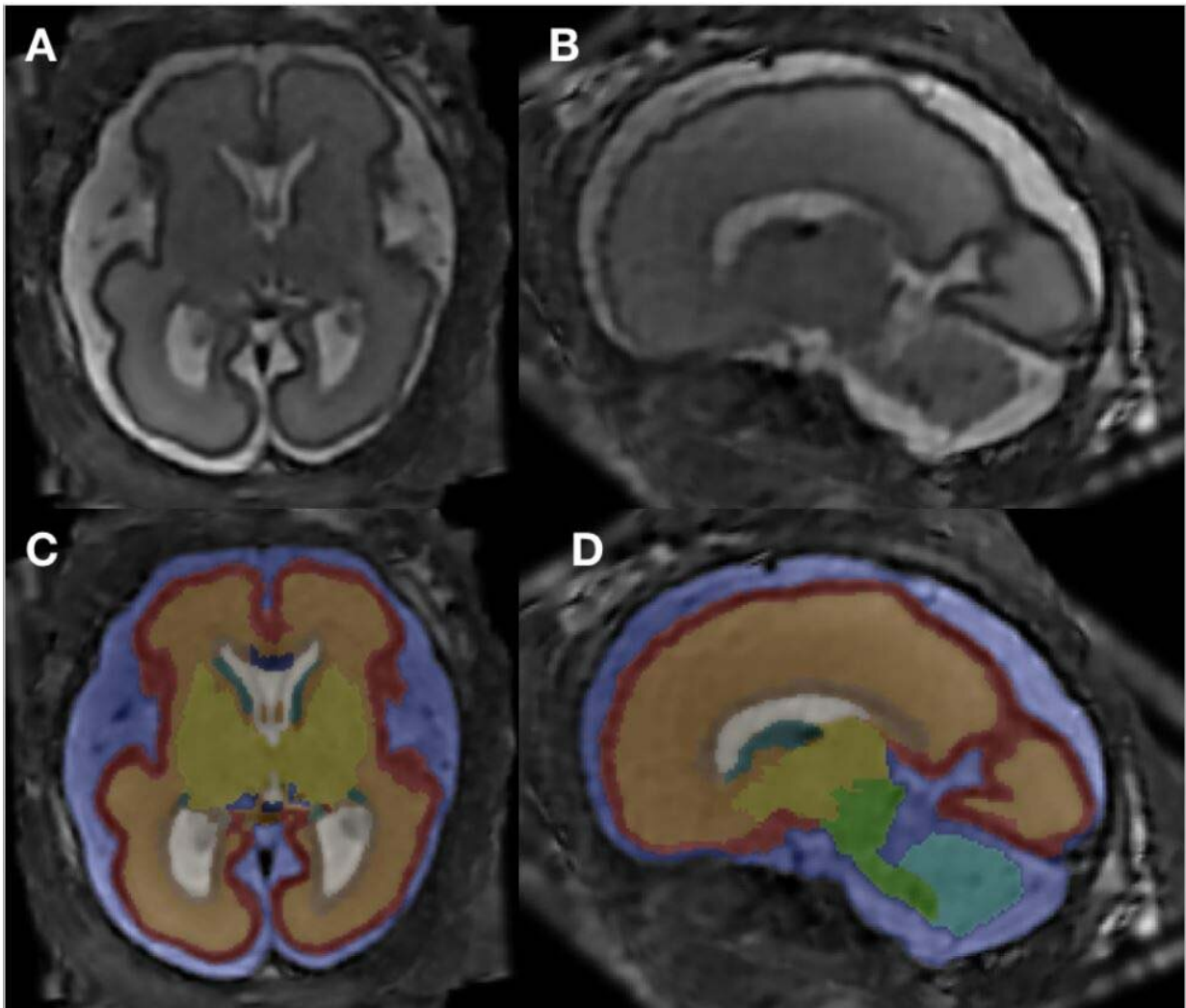


# MRI reveals altered brain structure in fetuses exposed to alcohol

December 1 2021

---



MRI super-resolution reconstruction and atlas-based tissue segmentation. (A, B) Postprocessed MRI super-resolution reconstructions in axial and sagittal planes of a fetus at 26+6 GW. (C, D) Respective manually corrected atlas-based tissue

segmentation. Color coding: blue - external CSF-spaces, red - cortex, orange - subcortical parenchyma, brown - periventricular zone, dark green - ganglionic eminence, white - ventricular system, dark blue - corpus callosum, yellow – deep gray nuclei (basal ganglia and thalamus), light green - brainstem, light blue - cerebellum, turquoise - left hippocampus, gray - right hippocampus. Credit: RSNA and Marlene Stuempflen, M.D.

In the first MRI-based study to investigate pre-natal alcohol exposure, researchers found significant changes in the brain structure of fetuses exposed to alcohol compared to healthy controls. Results of the study are being presented today at the annual meeting of the Radiological Society of North America (RSNA).

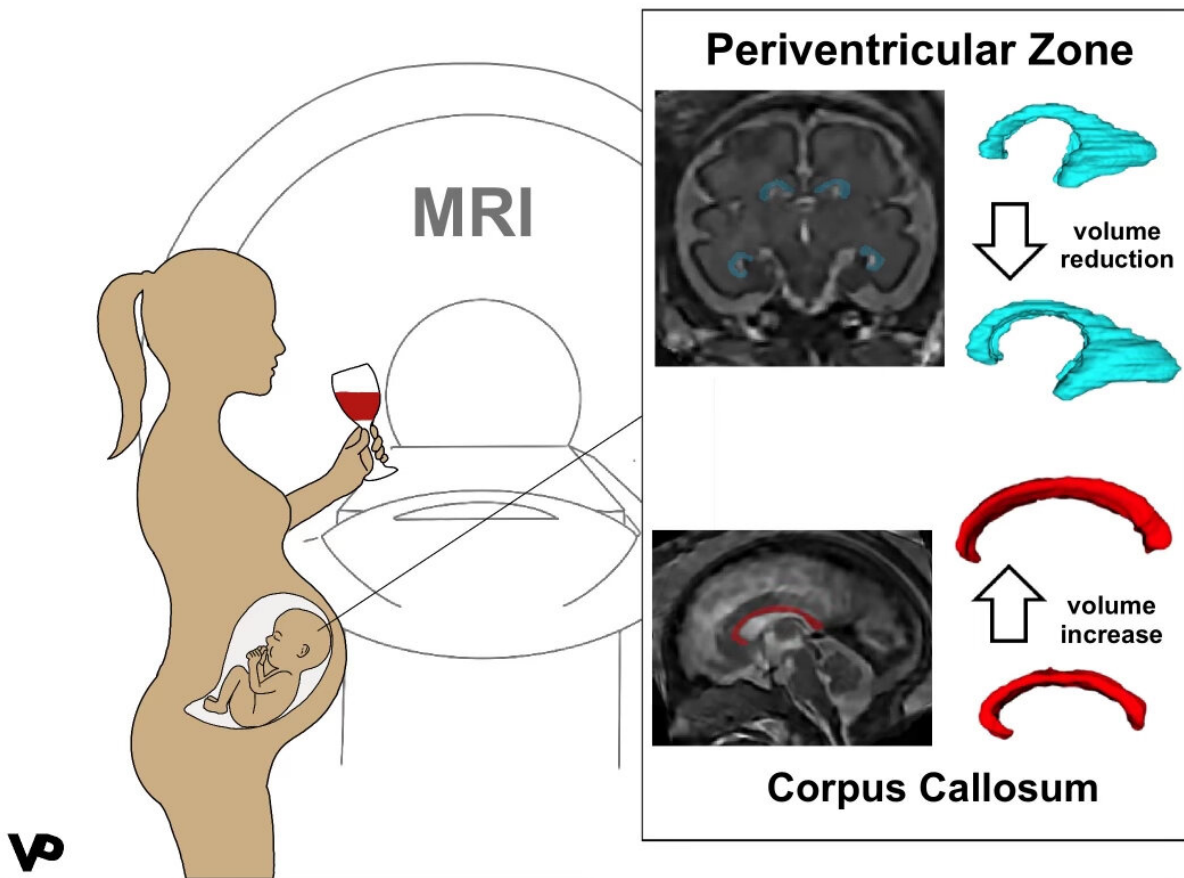
"Fetal alcohol syndrome is a worldwide problem in countries where alcohol is freely available," said Gregor Kasprian, M.D., associate professor of radiology at the Medical University of Vienna in Austria. "It's estimated that 9.8% of all pregnant women are consuming alcohol during pregnancy, and that number is likely underestimated."

Fetal alcohol syndrome is the most severe form of a group of conditions called [fetal alcohol spectrum disorders](#) that result from alcohol exposure during pregnancy. Babies born with fetal alcohol spectrum disorders may have specific physical features, learning disabilities, behavioral problems or speech and language delays. According to Dr. Kasprian, one in 70 pregnancies with alcohol exposure results in [fetal alcohol syndrome](#).

"There are many postnatal studies on infants exposed to alcohol," Dr. Kasprian said. "We wanted to see how early it's possible to find changes in the fetal brain as a result of alcohol exposure."

For the study, researchers recruited 500 [pregnant women](#) who were

referred for a fetal MRI for clinical reasons. On an anonymous questionnaire, 51 of the women admitted to consuming alcohol during their pregnancy. The questionnaires used were the Pregnancy Risk Assessment Monitoring System (PRAMS), a surveillance project of the Centers for Disease Control and Prevention and health departments, and the T-ACE Screening Tool, a measurement tool of four questions that identify risk drinking.



Graphical abstract: effects of prenatal alcohol exposure (PAE). PAE leads to a volume reduction in the periventricular zone and a volume increase in the corpus callosum. Credit: RSNA and Marlene Stuempflen, M.D.

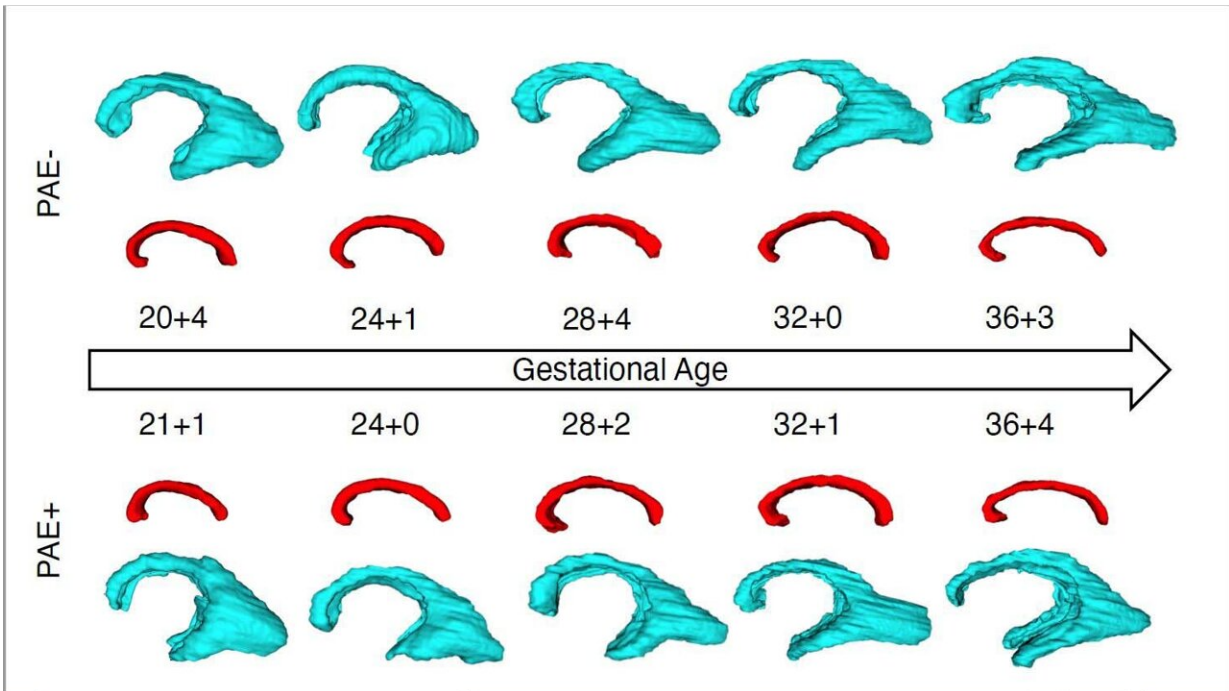
"We provided a safe environment where women could feel comfortable honestly answering the questions," Dr. Kasprian said.

After eliminating some of the fetal MRIs for reasons such as structural brain anomalies and/or poor image quality, the final study group consisted of 26 fetal MRI exams from 24 alcohol-positive fetuses and a control group of 52 gender- and age-matched healthy fetuses. At the time of imaging, fetuses ranged in age between 20 and 37 weeks.

The researchers used super-resolution imaging, which allowed them to create one dataset to re-construct each [fetal brain](#). Next, they completed an analysis of 12 different brain structures, computing total brain volume and segment volumes of specific brain compartments.

"One of the main hallmarks of our study is that we investigated so many smaller sub-compartments of the brain," said co-author Marlene Stuempflen, M.D., scientific researcher at the Medical University of Vienna.

The statistical analysis revealed two major differences in the alcohol-exposed fetuses compared to healthy controls: an increased volume in the corpus collosum and a decreased volume in the periventricular zone.



Longitudinal growth trajectories of the periventricular zone (blue) and the corpus callosum (red) in fetuses with (PAE+) and without (PAE-) prenatal alcohol exposure. The volumetric relations of included images are not representative: The scaling has been altered to allow for an easy comparison of shape and structure of the respective compartments. Credit: RSNA and Marlene Stuempflen, M.D.

"This is the first time that a prenatal imaging study has been able to quantify these early alcohol-associated changes," Dr. Stuempflen said.

The corpus callosum is the main connection between the brain's two hemispheres. Dr. Stuempflen noted that it is fitting that this very central structure is affected, because the clinical symptoms of fetal alcohol spectrum disorders are highly heterogenous, or diverse, and cannot be pinpointed to one specific substructure of the brain.

"The changes found in the periventricular zone, where all neurons are born, also reflect a global effect on brain development and function," she said.

The researchers said finding a thicker corpus collosum in the alcohol-positive fetuses was surprising because the corpus collosum is thinner in infants with fetal alcohol spectrum disorders.

"It appears that [alcohol](#) exposure during pregnancy puts the [brain](#) on a path of development that diverges from a normal trajectory," Dr. Kasprian said. "Fetal MRI is a very powerful tool to characterize [brain development](#) not only in genetic conditions, but also acquired conditions that result from exposure to toxic agents."

Additional co-authors are Ernst Schwartz, M.Sc., Mariana Diogo, M.D., Ph.D., Sarah Glatter, M.D., M.M.Sc., Birgit Pfeiler, Victor Schmidbauer, M.D., Lisa Bartha-Doering, Ph.D., Rainer Seidl, M.D., Elisabeth Krampl-Bettelheim, M.D., and Daniela Prayer, M.D.

Provided by Radiological Society of North America

Citation: MRI reveals altered brain structure in fetuses exposed to alcohol (2021, December 1) retrieved 3 May 2023 from

<https://medicalxpress.com/news/2021-12-mri-reveals-brain-fetuses-exposed.html>

This document is subject to copyright. Apart from any fair dealing for the purpose of private study or research, no part may be reproduced without the written permission. The content is provided for information purposes only.