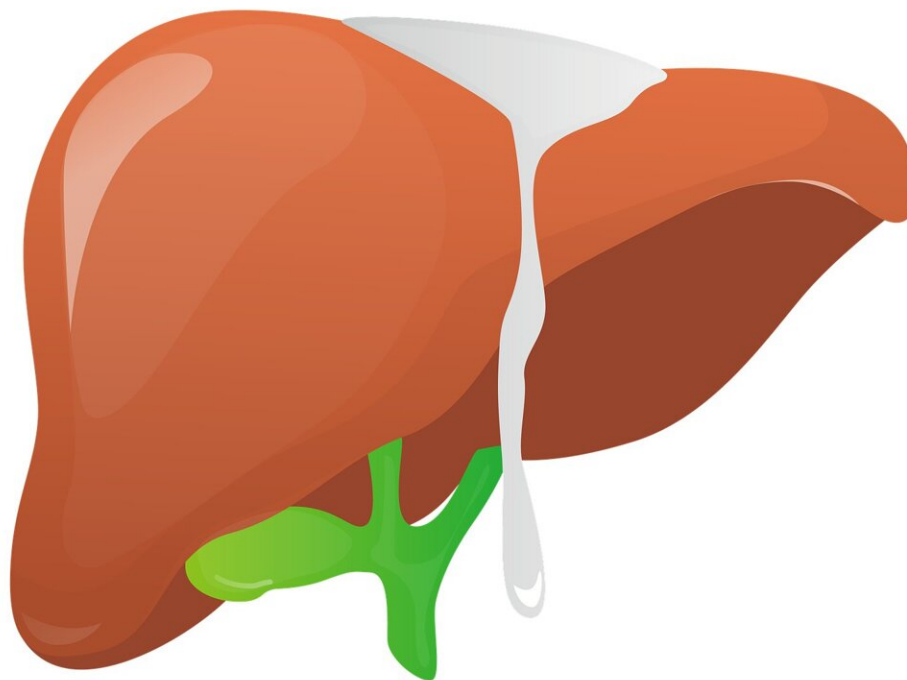


Women with irregular periods may be at risk for liver disease

March 3 2022



Credit: Pixabay/CC0 Public Domain

Women with long or irregular periods are known to have a higher risk of type 2 diabetes and heart disease, but researchers found these women may also be at risk for nonalcoholic fatty liver disease (NAFLD), according to a new study published in the Endocrine Society's *Journal of Clinical Endocrinology and Metabolism*.

About 24% of U.S. adults have NAFLD, a chronic disease in which excess fat builds up in your liver. This buildup of fat is not caused by heavy alcohol use. NAFLD can progress to chronic liver damage and is associated with a higher risk of death. Diet and exercise are the standard of care for NAFLD as no medicines have been approved to treat the disease.

"Our study results show that long or irregular menstrual cycles may be associated with an increased risk of developing NAFLD, and this link was not explained by obesity," said Seungho Ryu, M.D., Ph.D., of the Center for Cohort Studies, Total Healthcare Center, Kangbuk Samsung Hospital, Sungkyunkwan University School of Medicine in Seoul, South Korea. "Previous studies have shown that long or irregular menstrual cycles are associated with type 2 diabetes and cardiovascular disease, but our study is the first to find a link between long or irregular menstrual cycles and NAFLD."

The researchers studied a data set of 72,092 women under 40 years old. About 28% of these women had long or irregular menstrual cycles, and 7% had NAFLD. The researchers followed up four years later and found new cases of NAFLD occurred in almost 9% of the women. The researchers concluded that there was an association between long or irregular menstrual cycles in young, premenopausal women and an

increased risk of NAFLD.

"Young women with long or [irregular menstrual cycles](#) may benefit from lifestyle changes to reduce the risk of NAFLD as well as other cardiometabolic diseases," Ryu said.

More information: In Young Cho et al, Long or Irregular Menstrual Cycles and Risk of Prevalent and Incident Nonalcoholic Fatty Liver Disease, *The Journal of Clinical Endocrinology & Metabolism* (2022). [DOI: 10.1210/clinem/dgac068](https://doi.org/10.1210/clinem/dgac068)

Provided by The Endocrine Society

Citation: Women with irregular periods may be at risk for liver disease (2022, March 3) retrieved 19 February 2023 from <https://medicalxpress.com/news/2022-03-women-irregular-periods-liver-disease.html>

This document is subject to copyright. Apart from any fair dealing for the purpose of private study or research, no part may be reproduced without the written permission. The content is provided for information purposes only.