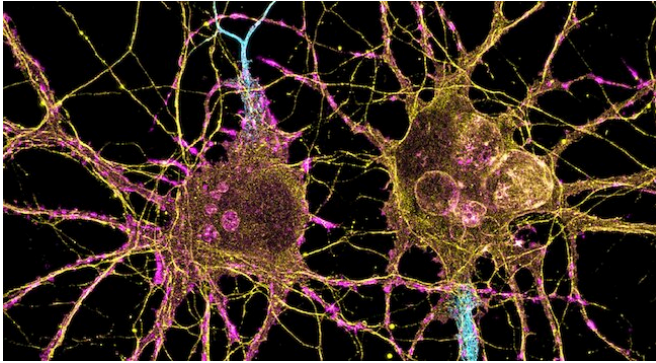


# Scientists uncover new targets for treating Parkinson's disease

21 March 2022



Parkinson's disease is not usually seen as an autoimmune disease. Credit: Letierrier, NeuroCyto Lab, INP, Marseille, France

Scientists at La Jolla Institute for Immunology (LJI) have found that people with Parkinson's disease have a clear "genetic signature" of the disease in their memory T cells. The scientists hope that targeting these genes may open the door to new Parkinson's treatments and diagnostics.

"Parkinson's disease is not usually seen as an autoimmune disease," says LJI Research Assistant Professor Cecilia Lindestam Arlehamn, Ph.D. "But all of our work points toward T [cells](#) having a role in the disease."

"Now that we can see what these T cells are doing, we think intervening with antibody therapies could have an impact on the [disease progression](#), especially early on," adds LJI Professor Alessandro Sette, Dr.Biol.Sci., who led the work with Lindestam Arlehamn.

This study was published recently in the journal *npj Parkinson's Disease*.

## A shifting view of Parkinson's

Parkinson's progresses as dopamine-producing neurons in the brain die. Unfortunately, scientists have been unable to pinpoint what causes this [cell death](#)—though they do have a clue: The doomed neurons contain clumps of a damaged protein called [alpha-synuclein](#).

LJI research suggests these clumps may be the kiss of death for dopamine-producing neurons. Sette and Lindestam Arlehamn [recently showed](#) that people with Parkinson's have T cells that target alpha-synuclein early on in Parkinson's disease.

Self-reactive T cells can damage the body's own cells, including neurons. In fact, self-reactive T cells are the culprits behind many autoimmune diseases.

## Researchers find unexpected drug targets

The new study offers a way to stop these T cells in their tracks. The LJI team found that people with Parkinson's disease have memory T cells with a very specific gene signature. These genes appear responsible for targeting alpha-synuclein and potentially causing ongoing inflammation in cases of Parkinson's.

"Identifying these genes will make it possible to see which patients have T cells that respond to alpha-synuclein and which do not," says Lindestam Arlehamn.

One important gene expressed in these T cells is LRRK2. This gene is associated with the genetic, or familial, type of Parkinson's disease. Neurons in many people with Parkinson's express LRRK2, but the new study is the first to show this gene expressed in T cells.

But many of the genes expressed in these T cells were completely unexpected and not previously linked to Parkinson's disease. "This finding suggests we found novel targets for potential therapeutics," says Sette.

The scientists found these genes expressed in blood samples collected at LJI's John and Susan Major Center for Clinical Investigation and by study collaborators at UC San Diego, Columbia University Irving Medical Center, and the University of Alabama at Birmingham.

Provided by La Jolla Institute for Immunology

"We couldn't have done any of this work without local blood donors and the instrumental work of our Center for Clinical Investigation," says Lindestam Arlehamn. "Everyone ships their [blood samples](#) to us, and the LJI Center for Clinical Investigation processes them."

### **The path to new Parkinson's therapies**

Going forward, Lindestam Arlehamn and her collaborators plan to study post-mortem brain samples. This work will confirm whether the same self-reactive T cells found in blood also target neurons in people with Parkinson's. The team also wants to look for other targets, called antigens, that might be recognized by T cells in individuals with Parkinson's disease.

To translate this work to new therapies, it will be important for scientists to study how they can activate or inhibit different [genes](#) at different stages of Parkinson's progression.

"We have many avenues now for future research," says Sette.

Additional authors of the study, "Transcriptional analysis of peripheral memory T cells reveals Parkinson's disease-specific gene signatures," include first author Rekha Dhanwani, João Rodrigues Lima-Junior, Ashu Sethi, John Pham, Gregory Williams, April Frazier, Yaqian Xu, Amy W. Amara, David G. Standaert, Jennifer G. Goldman, Irene Litvan, Roy N. Alcalay, Bjoern Peters, and David Sulzer.

**More information:** Transcriptional analysis of peripheral memory T cells reveals Parkinson's disease-specific gene signatures, *npj Parkinson's Disease* (2022). [DOI: 10.1038/s41531-022-00282-2](https://doi.org/10.1038/s41531-022-00282-2)

APA citation: Scientists uncover new targets for treating Parkinson's disease (2022, March 21) retrieved 7 August 2022 from <https://medicalxpress.com/news/2022-03-scientists-uncover-parkinson-disease.html>

*This document is subject to copyright. Apart from any fair dealing for the purpose of private study or research, no part may be reproduced without the written permission. The content is provided for information purposes only.*