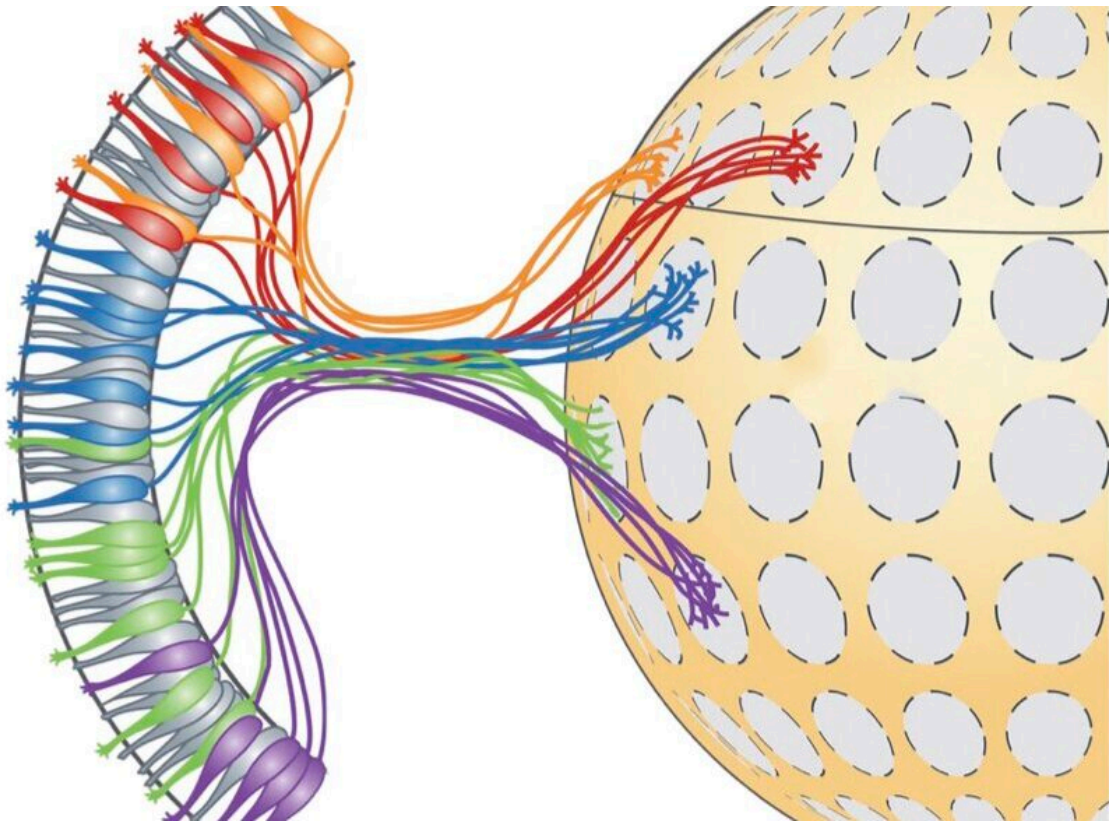


Researchers map mouse olfactory glomeruli using state-of-the-art techniques

April 21 2022, by Ingrid Fadelli



The team identified a map of where each different type of olfactory sensory neuron projects its information within the brain. Credit: Wang et al. Adapted from: Shannon DeMaria and John Ngai (2010) JCB.

Detecting odors and differentiating between them is an essential ability that helps animals to survive and interact more effectively with their

surrounding environment. In mammals, odors are known to be initially processed by olfactory sensory neurons, a class of neurons that continuously detects and transmits odor-related information.

These [neurons](#) project their [axons](#) (i.e., long threadlike parts of nerve cells that conduct impulses) to a stereotyped location in the [olfactory bulb](#) (OB). This process leads to the formation of glomeruli (i.e., clusters of nerve endings).

The fixed position of glomeruli in the OB suggests that their organization might play a key role in mammals' perception of odors. This has encouraged some neuroscientists to investigate these clusters of nerve endings more closely, in the hope to unveil more information about the mammalian [olfactory system](#).

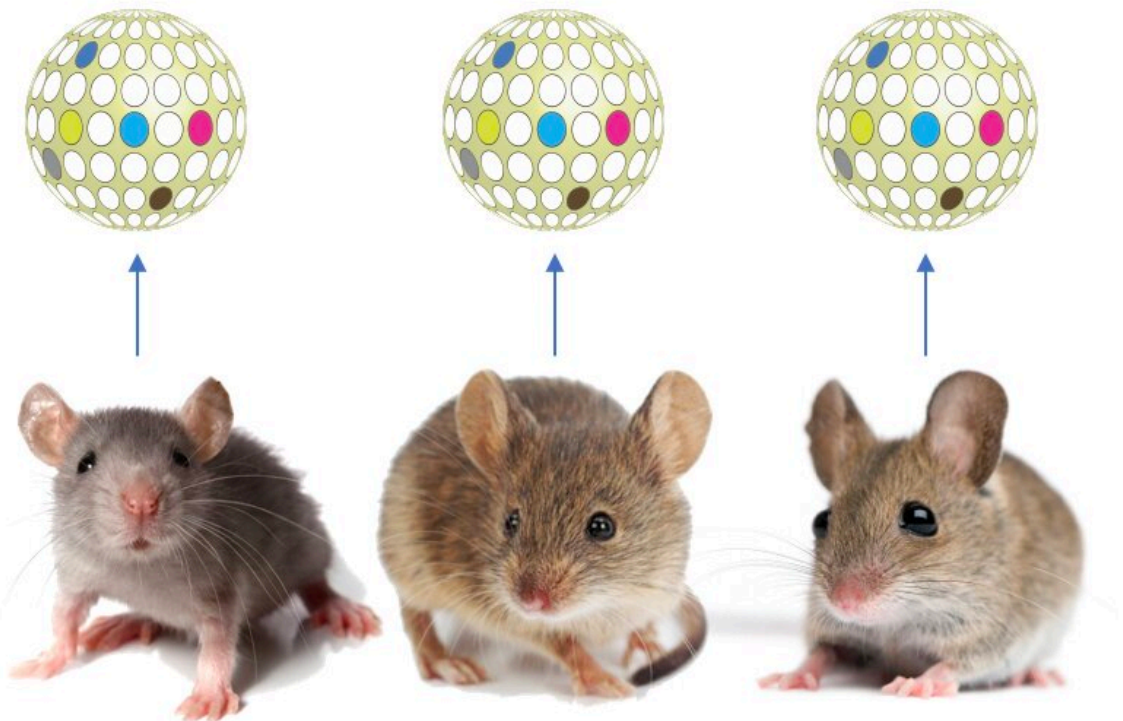
Researchers at University of Massachusetts Medical School, Broad Institute of Harvard and MIT, and Stanford University have recently carried out a study investigating the organization of mouse olfactory glomeruli more closely, using a series of state-of-the-art technologies and techniques. Their analyses, outlined in a paper published in *Nature Neuroscience* allowed them to generate a detailed map of the positions of olfactory glomeruli in the mouse OB.

"We were trying to address a fundamental, unresolved question in neurobiology that I think is fascinating," Paul L. Greer, one of the researchers who carried out the study, told *Medical Xpress*. "Namely, we were interested in how animals can detect and discriminate between literally millions of different compounds that can differ from one another by only a single atom. Work from many extraordinary scientists has shed significant light on this question, but we still don't know exactly how this computation is performed by the brain."

While other research teams previously examined the organization of

glomeruli in the OB, so far they only identified the positions of a limited subset of these clusters. As a result, the relationship between the location of glomeruli and odor discrimination has been very difficult to infer.

In their study, Greer and his colleagues leveraged recent technical advances to produce a more detailed of map glomerular locations in the mouse OB. More specifically, they used a combination of single-cell RNA sequencing, spatial transcriptomics and machine learning techniques.



The image shows that the map identified by the researchers is stereotyped across all animals within the same species suggesting that this map is important for helping the animal decode what odor it is smelling. Credit: Wang et al. Adapted from: Shannon DeMaria and John Ngai (2010) JCB.

Single-cell RNA sequencing allows researchers to create transcriptional profiles of thousands of individual cells, so that they can understand what genes are expressed and in what quantities. In their experiments, Greer and his colleagues used this technology to determine what genes are expressed by each type of cell in the noses of mice.

"There are over 1,000 different types of [olfactory sensory neurons](#), the cells responsible for detecting smells in the environment, and each of these different types of sensory neurons is able to detect the expression of a unique set of chemicals," Greer explained. "By performing single cell RNA sequencing on these cells, we found that each of these different types of sensory neurons expresses a unique combination of genes. We believe that these genes instruct the sensory neuron on where to send its information within the brain."

Subsequently, Greer and his colleagues used [machine learning algorithms](#) to analyze the data they collected using single-cell RNA sequencing. This allowed them to create a map that outlined the brain regions where most of the sensory neurons in the mouse OB sent odor-related information.

"We think this study provides the best roadmap to date of how olfactory information is transmitted into the brain, which we believe will be useful for the larger scientific community in trying to uncover the mechanisms the brain employs to decode odor identity," Greer said.

"While we think this is an important advance, it is only one step forward and much remains to be uncovered."

In the future, the mouse olfactory glomerular map created by this team of researchers could be used to conduct more precise studies exploring the relationship between the positions of glomeruli in the mouse OB and odor processing. This map provides new valuable insight, yet it is still

incomplete. In their next studies, Greer and his colleagues plan to fill in the missing holes and then collectively validate their findings experimentally.

"In addition, the cells that we have studied in our recent work represent only the first connections in a very complicated circuitry," Greer added. "Future work identifying the maps of cells further down in the signaling network will be critical for characterizing how odors are decoded and internal percepts of the animal's external surroundings are generated.

More information: I-Hao Wang et al, Spatial transcriptomic reconstruction of the mouse olfactory glomerular map suggests principles of odor processing, *Nature Neuroscience* (2022). [DOI: 10.1038/s41593-022-01030-8](https://doi.org/10.1038/s41593-022-01030-8)

© 2022 Science X Network

Citation: Researchers map mouse olfactory glomeruli using state-of-the-art techniques (2022, April 21) retrieved 14 February 2023 from <https://medicalxpress.com/news/2022-04-mouse-olfactory-glomeruli-state-of-the-art-techniques.html>

<p>This document is subject to copyright. Apart from any fair dealing for the purpose of private study or research, no part may be reproduced without the written permission. The content is provided for information purposes only.</p>
--