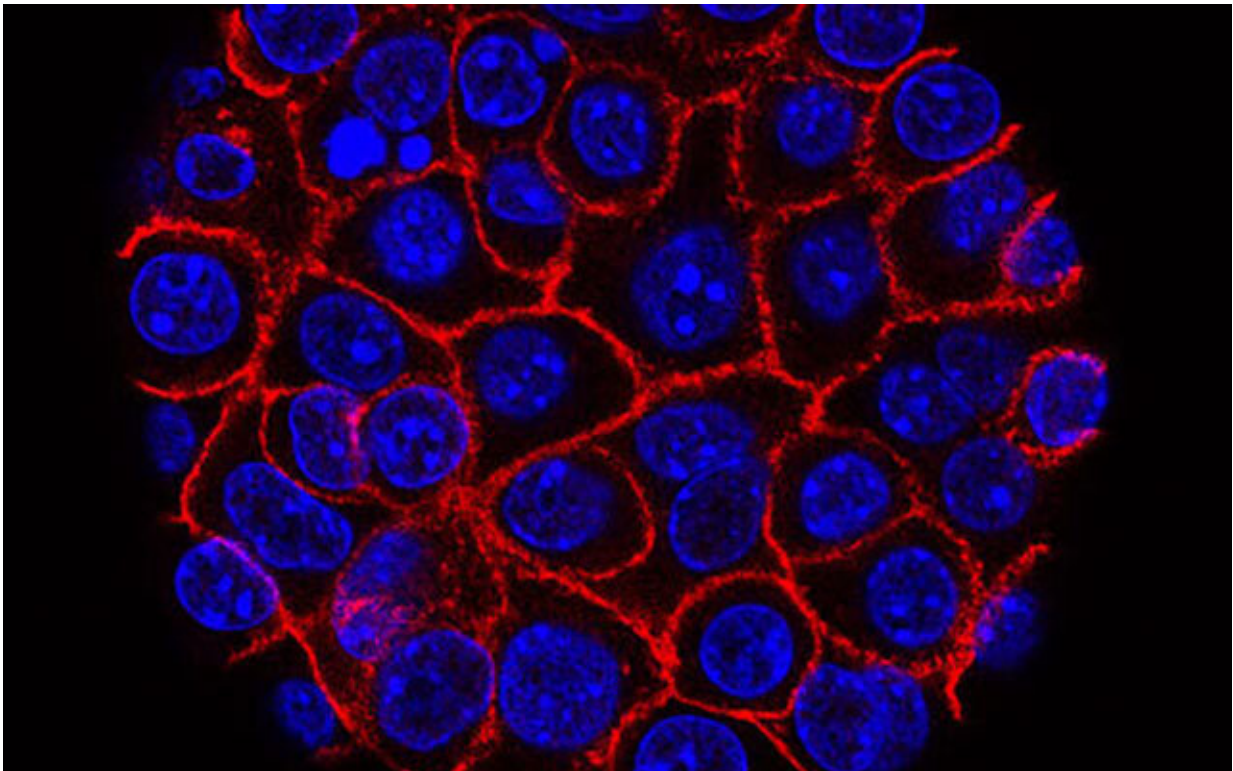


Exercise amplifies immune attack on pancreatic cancer

June 2 2022



Pancreatic cancer cells (blue) growing as a sphere encased in membranes (red).
Credit: National Cancer Institute

Aerobic exercise reprograms the immune system to reduce pancreatic tumor growth and amplify the effects of immunotherapy, a new study finds.

Published online in *Cancer Cell* June 2, the study provides new insight into how the mammalian [immune system](#), designed to attack foreign invaders like bacteria, can also recognize [cancer cells](#) as abnormal. Exercise-induced increases in levels of the hormone adrenalin cause changes to the immune system, say the study authors, including in the activity of [cells](#) that respond to signaling protein interleukin-15 (IL-15).

Biological systems that fight disease and repair tissue are intertwined, the researchers say, with IL-15 signaling, based on the context, either encouraging the recovery of muscles after exercise or, in the case of the current work, amplifying immune attack on [pancreatic cancer](#) cells.

Led by researchers at NYU Grossman School of Medicine and Perlmutter Cancer Center, the current study found that exercise promotes the survival of CD8 T cells sensitive to IL-15, and doubles the number of them homing to pancreatic ductal adenocarcinoma (PDAC) tumors in mice. Such "effector" T cells have been shown by other studies to be capable of killing [cancer](#) cells. Other tests found that aerobic exercise for 30 minutes five times a week reduced the rate of cancer formation by 50 percent in one mouse model of PDAC, and reduced tumor weight by 25 percent in another model, in which mice ran on treadmills for three weeks.

In collaboration with The University of Texas MD Anderson Cancer Center, the study authors then found that [human patients](#)—enrolled in their "Preoperative Rehabilitation During Neoadjuvant Therapy for Pancreatic Cancer" [clinical trial](#)—who exercised before surgery to remove their pancreatic tumors had more CD8 effector T cells that expressed a protein called granzyme B, which confers [tumor](#)-cell killing ability. Also in that trial, which opened in 2017, those patients who exercised and had more of these cell types had 50% percent higher overall survival over five years than patients with fewer of them.

"Our findings show, for the first time, how aerobic exercise affects the immune microenvironment within pancreatic tumors," says first author Emma Kurz, MD, Ph.D., a graduate student in the Molecular Oncology & Tumor Immunology Ph.D. Training Program at NYU Grossman School of Medicine's Vilcek Institute of Graduate Biomedical Sciences. "The work helped to reveal that activation of IL-15 signaling in pancreatic cancer might be an important treatment approach in the future."

Boosting therapeutic response

In the last several years, as the role of the IL-15 signaling in tumors became clear, other researchers attempted to treat cancer by direct infusion of this protein, which unfortunately increased the risk of systemic inflammatory damage. Subsequently, the field designed treatments based on the fact that signaling proteins such as IL-15 fit into receptors proteins (IL-15R α), like a key into a lock, on the surface of target T or NK cells. New drug candidates mimic these "lock and key" interactions, which transmit a message to activate the target cell.

The pharmaceutical company Novartis has been developing a "super agonist" agent, NIZ985, which is designed to enhance IL-15/IL-15R α pathway signals with reduced potential for harmful inflammatory effects. This approach has not yet been tested in large numbers of pancreatic cancer patients.

In the current study, Kurz and colleagues showed that either [aerobic exercise](#) or treatment with NIZ985 increased the effectiveness of chemotherapy and an existing treatment that blocks the effect of a protein called protein death receptor 1 (PD-1) in mice. To spare normal cells from immune attack, the immune system uses "checkpoints", like PD-1—sensors, on immune cells that turn them off when they receive the right signal. Cancer cells hijack such checkpoints to inactivate

immune responses.

Drugs that block the function of PD-1 can make tumors "visible" again to immune cells, but have had little efficacy against pancreatic ductal adenocarcinoma, which has a five-year survival rate of 10 percent. The PCC research team found that PD-1 blockade increased the number of IL-15-responsive, cancer cell-killing CD8+ T cells in tumors of mice by 66 percent alone, but by 175 percent when combined with exercise. In addition, the authors found that combination of IL-15 superagonist NIZ985 and PD-1-inhibiting therapy increased the survival of mice with advanced pancreatic cancer by 100%.

"Our work demonstrates that exercise, and related IL-15 signals, can prime treatment-resistant, pancreatic tumors for improved responses to immune-based therapeutics," says study senior author Dafna Bar-Sagi, Ph.D., [senior vice president](#), vice dean for science, and chief scientific officer at NYU Langone Health. "That even mild exercise can profoundly alter the environment in tumors points to the potential of this approach in treating patients with a devastating disease burden and few options."

As a result of the current work, the study team is collaborating with Perlmutter member Paul Oberstein, MD, director of Gastrointestinal Oncology at NYU Langone, as well as members from Rusk Rehabilitation, to launch a clinical trial assessing the immune effects of exercise in pancreatic cancer patients. In addition, the team plans continue exploring the potential efficacy of IL-15 super-agonists in combination with chemotherapy to combat pancreatic tumors.

More information: Dafna Bar-Sagi, Exercise-Induced Engagement of the IL-15/IL-15R α axis Promotes Anti-Tumor Immunity in Pancreatic Cancer, *Cancer Cell* (2022). [DOI: 10.1016/j.ccell.2022.05.006](https://doi.org/10.1016/j.ccell.2022.05.006). [www.cell.com/cancer-cell/fulltext/S1535-6108\(22\)00217-3](https://www.cell.com/cancer-cell/fulltext/S1535-6108(22)00217-3)

Provided by NYU Langone Health

Citation: Exercise amplifies immune attack on pancreatic cancer (2022, June 2) retrieved 6 February 2023 from <https://medicalxpress.com/news/2022-06-amplifies-immune-pancreatic-cancer.html>

This document is subject to copyright. Apart from any fair dealing for the purpose of private study or research, no part may be reproduced without the written permission. The content is provided for information purposes only.