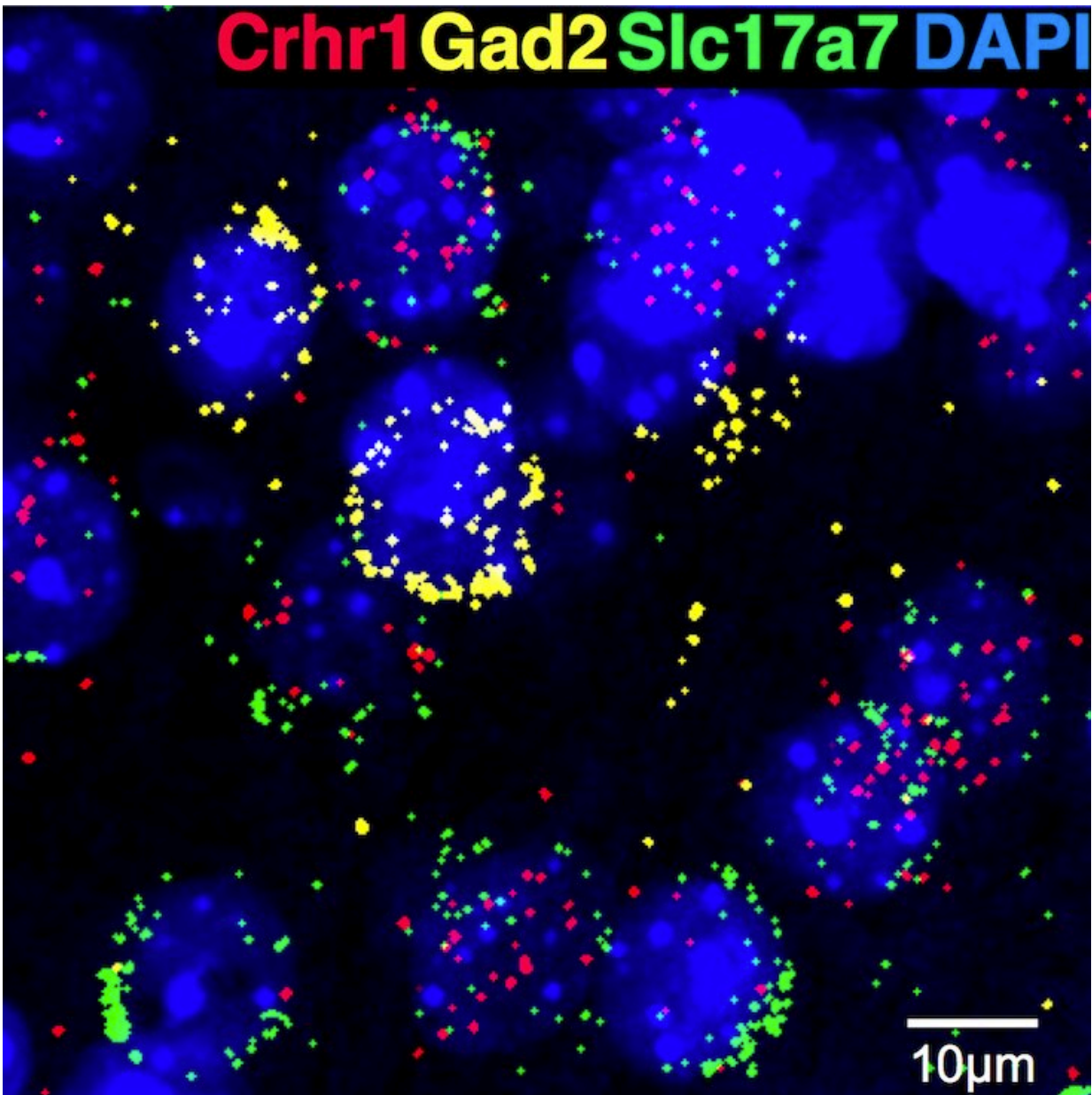


Immune protein may drive alcoholism relapse

June 8 2022



Scripps Research scientists find the immune protein CSF1 may contribute to anxiety during alcohol withdrawal. Some nuclei (blue) have the corticotropin-releasing factor receptor 1 *crhr1* gene (red), as well as the glutamate transporter gene *slc17a7* (green), but not the glutamate decarboxylase gene *gad2* (yellow), suggesting that they predominantly comprise an excitatory population in the medial prefrontal cortex. Alcohol withdrawal results in increased CSF1 in these neurons, mimicking synaptic changes in glutamate transmission seen following alcohol withdrawal, and leading to heightened anxiety. Credit: Scripps Research

The anxiety that occurs during withdrawal from excessive alcohol use, and contributes to relapse, may be driven in part by the release of an immune protein in the brain, according to a new study from scientists at Scripps Research.

The discovery, reported online June 6, 2022, in *Molecular Psychiatry*, illuminates the molecular details of the brain's response to [alcohol withdrawal](#), and suggests that the immune protein, colony stimulating factor 1 (CSF1), could be a target of future treatments for [alcohol use disorder](#) (AUD).

"Alcohol withdrawal activates the stress system in the brain, which contributes to relapse, and in this study, we linked this [stress response](#) to CSF1, a neuroimmune mediator, opening up new opportunities for therapeutic intervention," says study senior author Marisa Roberto, Ph.D., professor and Schimmel Family Chair in the Department of Molecular Medicine at Scripps Research.

The study's first author, who performed many of the experiments, is Reesha R. Patel, Ph.D., a former postdoctoral researcher in the Roberto lab.

Alcohol is by far the most used and abused [recreational drug](#). According

to the 2019 National Survey on Drug Use and Health, nine million men and more than five million women in the United States have an [alcohol use disorder \(AUD\)](#), which is defined as an inability to control alcohol use despite its negative impact on the user's health, social life and/or employment. Drug treatments, talk-therapy and support group-based treatments are available, but relapse is common, mainly due to the limited understanding of the brain-circuit dysfunctions underlying AUD.

Scientists know that relapse-promoting [alcohol withdrawal symptoms](#) include rising feelings of anxiety, caused at least in part by the release of stress molecules such as corticotropin-releasing factor (CRF) within the brain. CRF stimulates receptors on [neurons](#) in the [prefrontal cortex](#), and in the limbic system, a set of more primitive brain structures that process emotions. If scientists could fully identify and characterize these CRF-sensitive neuronal populations, they could understand better how anxiety occurs during withdrawal and potentially devise effective treatments to block it.

Toward that end, Roberto and her team, in the new study, identified a population of neurons in the [medial prefrontal cortex](#) (mPFC) of mice that are sensitive to CRF because they express a CRF receptor called CRF1. The scientists showed that these neurons are involved in altering mood and behavior during alcohol exposure and withdrawal.

The team's initial experiments revealed that deletion of these CRF-sensitive neurons makes the mice less anxious, suggesting that the neurons normally mediate anxiety-like behaviors.

The researchers subsequently found that these CRF-sensitive mPFC neurons become less excitable—less likely to fire signals to other neurons when stimulated—in alcohol-dependent mice that experience alcohol withdrawal. In contrast, nearby mPFC neurons lacking CRF receptors become more excitable.

"These CRF-sensitive mPFC neurons appear to constitute a unique neuronal population that undergoes profound neuroadaptations with chronic alcohol exposure," says study co-author Pauravi Gandhi, Ph.D., a postdoctoral research associate in the Roberto lab.

Intriguingly, the researchers found that alcohol withdrawal, even as it dialed down the excitability of the CRF-sensitive neurons, also induced large increases in CSF1 gene expression within these neurons. CSF1 is an immune protein best known for its role in stimulating stem cells to mature into large white blood cells called macrophages. In the brain, CSF1 is thought to have a similar role in sustaining brain-resident immune cells called microglia. Moreover, prior research in mice has suggested that under conditions of chronic stress, CSF1 production rises in the mPFC, driving microglia to prune connections between neurons, which in turn causes signs of anxiety and depression.

Looking more closely at CSF1's role in alcohol withdrawal, Roberto and colleagues artificially increased CSF1 production in CRF-sensitive mPFC neurons in mice, and observed that the animals exhibited many of the same neuronal and behavioral changes seen in alcohol withdrawal—suggesting that elevated CSF1 levels in mPFC may be a key driver of alcohol-withdrawal signs and symptoms.

"Targeting CSF1 therefore may be a good strategy for treating AUD, and we're now eager to test that in our preclinical models," Patel says.

"Ethanol [withdrawal](#)-induced adaptations in prefrontal corticotropin releasing factor receptor 1-expressing neurons regulate anxiety and conditioned rewarding effects of ethanol" was co-authored by Reesha Patel, Sarah Wolfe, Vittoria Borgonetti, Pauravi Gandhi, Larry Rodriguez, Angela Snyder, Shannon D'Ambrosio, Michal Bajo, Alain Domissy, Steven Head, Candice Contet, R. Dayne Mayfield, Amanda Roberts and Marisa Roberto.

More information: Reesha R. Patel et al, Ethanol withdrawal-induced adaptations in prefrontal corticotropin releasing factor receptor 1-expressing neurons regulate anxiety and conditioned rewarding effects of ethanol, *Molecular Psychiatry* (2022). [DOI: 10.1038/s41380-022-01642-3](https://doi.org/10.1038/s41380-022-01642-3)

Provided by The Scripps Research Institute

Citation: Immune protein may drive alcoholism relapse (2022, June 8) retrieved 26 April 2023 from <https://medicalxpress.com/news/2022-06-immune-protein-alcoholism-relapse.html>

This document is subject to copyright. Apart from any fair dealing for the purpose of private study or research, no part may be reproduced without the written permission. The content is provided for information purposes only.