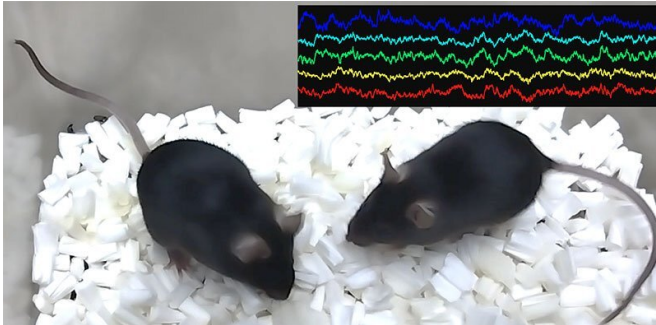


# Researchers uncover brain waves related to social behavior

24 June 2022



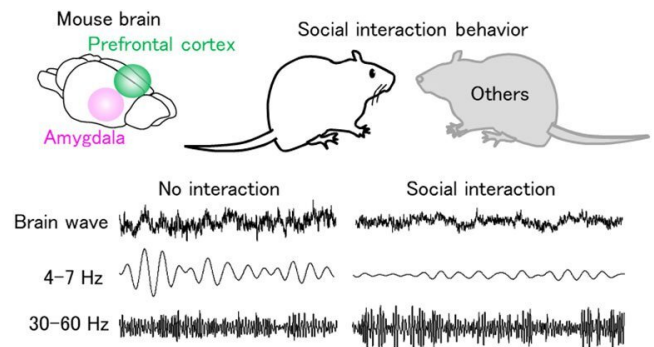
Animals socially interact with the others and generate specific electrical oscillations in the brain. Credit: Takuya Sasaki et al.

Researchers at Tohoku University and the University of Tokyo have discovered electrical wave patterns in the brain related to social behavior in mice. They also observed that mice showing signs of stress, depression, or autism lacked these brain waves.

The [medial prefrontal cortex](#) (mPFC) and amygdala regions of the [brain](#) regulate our emotion, and undergo pathological changes when we experience psychiatric diseases. However, the detailed neuronal processes behind this remain unclear.

Takuya Sasaki from Tohoku University's Graduate School of Pharmaceutical Sciences led a collaborative team who recorded electrical brain signals—so-called brain electrical waves—in the mPFC and amygdala areas of mice. They found that certain [brain waves](#) underwent pronounced variations when the mice interacted socially with one another. Specifically, brain waves at the frequency band of theta (4-7 Hz) and gamma (30-60 Hz) decreased and increased, respectively, during socializing.

When the same tests were applied to mice exhibiting poor social skills or symptoms of depression and autism, the brain waves were not present. Notably, artificially replicating social behavior-related brain waves by an optical and genetic manipulation technique in these pathological mouse models restored their ability to interact socially.



Two brain regions, the prefrontal cortex and amygdala, are specific to social behavior. They decrease and increase theta (4-7Hz) and gamma (30-60 Hz) oscillations, respectively, during social interaction. Credit: Takuya Sasaki et al.

"This finding provides a unified understanding of brain activity underlying social behavior and its deficits in disease," says Sasaki.

Looking ahead, Sasaki is eager to identify the basic mechanisms of neuronal dynamics in these brain waves and evaluate the involvement of the other brain regions in [social behavior](#). In conjunction, he is investigating whether the same brain mechanisms work in humans for clinical applications.

The research was published in *eLife*.

**More information:** Nahoko Kuga et al, Prefrontal-amygdalar oscillations related to social behavior in mice, *eLife* (2022). DOI: [10.7554/eLife.78428](https://doi.org/10.7554/eLife.78428)

Provided by Tohoku University

APA citation: Researchers uncover brain waves related to social behavior (2022, June 24) retrieved 30 June 2022 from <https://medicalxpress.com/news/2022-06-uncover-brain-social-behavior.html>

*This document is subject to copyright. Apart from any fair dealing for the purpose of private study or research, no part may be reproduced without the written permission. The content is provided for information purposes only.*