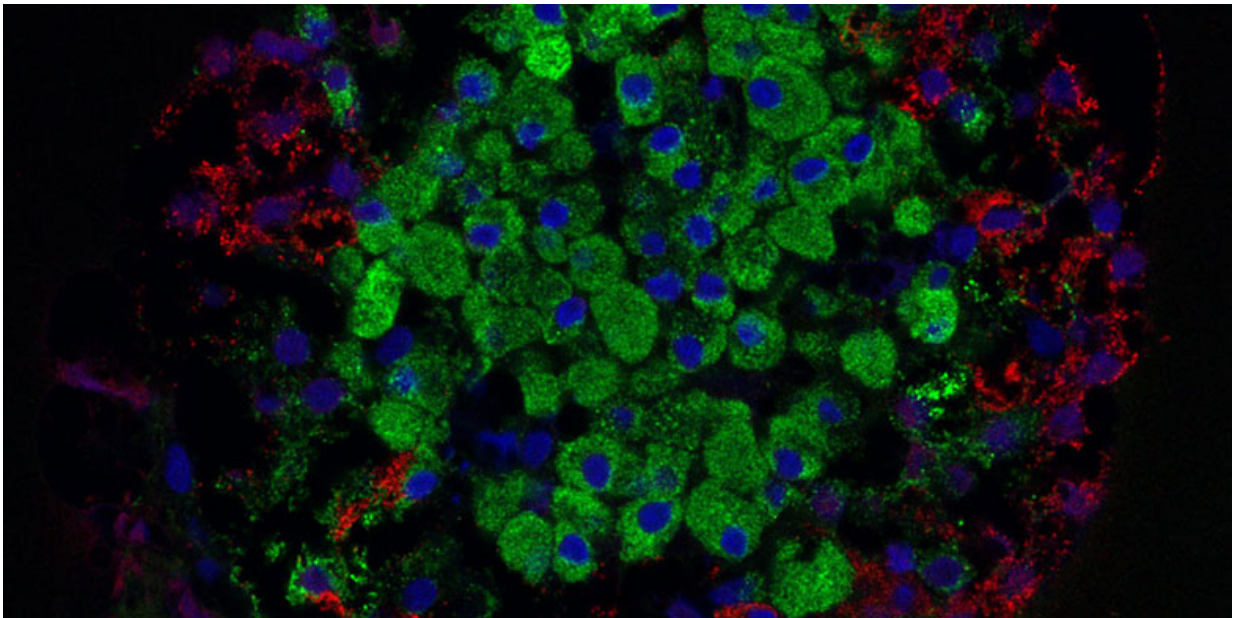


# Focus on beta cells instead of immune system could be key to preventing type 1 diabetes

June 28 2022

---



Beta cells (green) produce the hormone insulin. Credit: Masur / Wikimedia Commons

Research into the causes of type 1 diabetes often focuses on the autoimmune response, where the immune system destroys pancreatic islet beta cells that produce insulin. A new study by scientists at the University of Chicago instead looks at the role of the beta cells themselves in triggering autoimmunity. The research also raises the possibility that new medications could block the immune system from

destroying beta cells and prevent type 1 diabetes from developing in at risk or early onset patients.

The study, published today in *Cell Reports*, describes how the researchers used genetic tools to knock out or delete a gene called *Alox15* in mice that are genetically predisposed to developing type 1 [diabetes](#). This gene produces an enzyme called 12/15-Lipoxygenase, which is known to be involved in processes that produce inflammation in beta [cells](#). Deleting *Alox15* in these mice preserved their amount of beta cells, reduced the number of immune T cells infiltrating the islet environment, and prevented type 1 diabetes from developing in both males and females. These mice also showed increased expression of the gene encoding a protein called PD-L1 that suppresses autoimmunity.

"The immune system doesn't just decide one day that it's going to attack your beta cells. Our thinking was that the beta cell itself has somehow fundamentally altered itself to invite that immunity," said senior author Raghavendra Mirmira, MD, Ph.D., Professor of Medicine and Director of the Diabetes Translational Research Center at UChicago.

"When we got rid of this gene, the beta cells no longer signaled to the immune system and the immune onslaught was completely suppressed, even though we didn't touch the immune system," he said. "That tells us that there is a complex dialogue between beta cells and immune cells, and if you intervene in that dialogue, you can prevent diabetes."

The study is the result of a long-term collaboration that began when Mirmira and several members of his lab were at Indiana University. Jerry Nadler, MD, Dean of the School of Medicine and Professor of Medicine and Pharmacology at New York Medical College discovered the role of the 12/15-Lipoxygenase enzyme, and Maureen Gannon, Ph.D., Professor of Medicine, Cell and Developmental Biology, and Molecular Physiology and Biophysics at Vanderbilt University, provided

a strain of mice that was used in the study, which allowed for the knockout of the *Alox15* gene when given the drug tamoxifen.

In 2012, Sarah Tersey, Ph.D., Research Associate Professor at UChicago and co-senior author of the new study, [led a project](#) that was among the first to suggest that the beta cell might be a central player in the development of type 1 diabetes.

"This allows us to understand the underlying mechanisms leading to the development of type 1 diabetes," Tersey said. "This has been a huge, changing part of the field where we focus more on the role of beta cells and not just autoimmunity."

The study also has interesting connections to cancer treatments that harness the immune system to fight tumors. Cancer cells often express the PD-L1 protein to suppress the immune system and evade the body's defenses. New drugs called checkpoint inhibitors target this protein, inhibiting or removing the PD-L1 "checkpoint" and unleashing the immune system to attack tumors. In the new study, increased PD-L1 in the [knockout mice](#) serves its intended purpose by preventing the [immune system](#) from attacking the beta cells.

In the new study, the researchers also tested a drug that inhibits the 12/15-Lipoxygenase enzyme on human beta cells. They saw that the drug, called ML355, increases levels of PD-L1, suggesting that it could interrupt the autoimmune response and prevent diabetes from developing. Ideally, it would be given to patients who are at high risk because of [family history](#) and show early signs of developing type 1 diabetes, or shortly after diagnosis before too much damage has been done to the pancreas. Mirmira and his team are taking the first steps to start [clinical trials](#) to test a possible treatment using ML355.

"This study certainly suggests that inhibiting the enzyme in humans can

increase levels of PD-L1, which is very promising," Mirmira said. "With beta cell targeted therapeutics, we believe that as long as the disease hasn't progressed to the point that there's massive destruction of [beta cells](#), you can catch an individual before that process starts and prevent the [disease progression](#) altogether."

The study is titled "Proinflammatory Signaling in Islet  $\beta$  Cells Propagates Invasion of Pathogenic Immune Cells in Autoimmune Diabetes."

**More information:** Raghavendra G. Mirmira, Proinflammatory Signaling in Islet beta Cells Propagates Invasion of Pathogenic Immune Cells in Autoimmune Diabetes, *Cell Reports* (2022). [DOI: 10.1016/j.celrep.2022.111011](#). [www.cell.com/cell-reports/full ... 2211-1247\(22\)00800-2](#)

Provided by University of Chicago

Citation: Focus on beta cells instead of immune system could be key to preventing type 1 diabetes (2022, June 28) retrieved 13 February 2023 from <https://medicalxpress.com/news/2022-06-focus-beta-cells-immune-key.html>

<p>This document is subject to copyright. Apart from any fair dealing for the purpose of private study or research, no part may be reproduced without the written permission. The content is provided for information purposes only.</p>
--