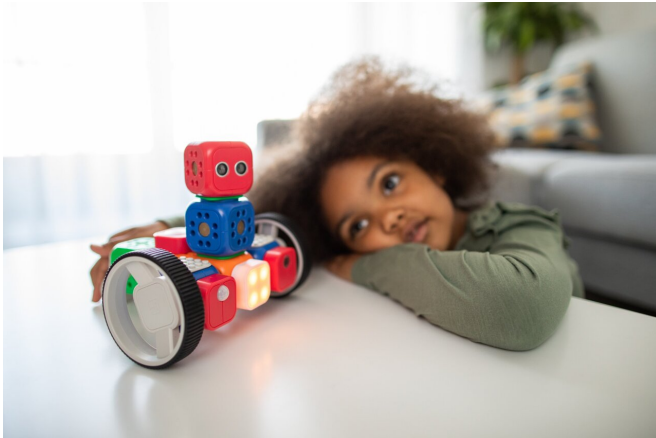


Research on recognizing facial emotion expressions could change our understanding of autism

2 August 2022



Credit: Unsplash/CC0 Public Domain

There's a common perception that autistic individuals are poor at recognizing others' emotions and have little insight into how effectively they do so.

But Autistic adults are only slightly less accurate at reading people's [facial emotions](#) compared to their non-autistic peers, according to new Australian research.

Recent research published in two papers in the leading international journal, *Autism Research*, shows we may need to revise widely accepted notions that adults diagnosed with autism experience difficulties when it comes to recognizing [social emotions](#) and have little insight into their processing of others' face emotions.

63 people diagnosed with autism and 67 non-autistic adults (with IQs ranging from 85 to 143) participated in a Flinders University study, with participants taking part in 3- 5-hour sessions

comparing their recognition of 12 human face emotion expressions such as anger and sadness.

Dr. Marie Georgopoulos collected a wide range of data during the course of her Ph.D., with subsequent reanalyses by the research team providing the basis for a series of research articles.

The results could mean social difficulties linked with autism may actually reflect differences that only become apparent in certain social interactions or high-pressure scenarios, challenging the perspective that [autistic adults](#) can't adequately read facial emotion expressions.

Study co-author and Matthew Flinders Distinguished Emeritus Professor of Psychology, Neil Brewer, says by deploying a wide array of emotions, presented in a variety of different ways, this study suggests that [autistic individuals](#) are, on average, only slightly less accurate but at the same time somewhat slower when classifying others' emotions.

"These findings challenge the notion that adults with autism are more likely to be overwhelmed by increasingly dynamic or complex emotional stimuli and to experience difficulties recognizing specific emotions."

There was a considerable overlap in performance between the two groups, with only a very small subgroup of autistic individuals performing at levels below that of their non-autistic peers.

The differences between groups were consistent regardless of how emotions were presented, the nature of the response required, or the particular emotion being looked at.

The research also showed that while there was

considerable variability in terms of individuals' insight into their interpretation of others' emotions, there was no evidence of any differences between the autistic and non-autistic samples.

"The sophisticated methodologies used in these studies not only help refine our understanding of emotion processing in [autism](#) but also provide further demonstrations of hitherto unacknowledged capabilities of autistic individuals."

"Further advances will likely require us to tap behaviors associated with emotion recognition and reactions to others' emotions in real-life interactions or perhaps in virtual reality settings."

More information: Neil Brewer et al, Facing up to others' emotions: No evidence of autism?related deficits in metacognitive awareness of emotion recognition, *Autism Research* (2022). [DOI: 10.1002/aur.2781](#)

Provided by Flinders University

APA citation: Research on recognizing facial emotion expressions could change our understanding of autism (2022, August 2) retrieved 14 October 2022 from <https://medicalxpress.com/news/2022-08-facial-emotion-autism.html>

This document is subject to copyright. Apart from any fair dealing for the purpose of private study or research, no part may be reproduced without the written permission. The content is provided for information purposes only.