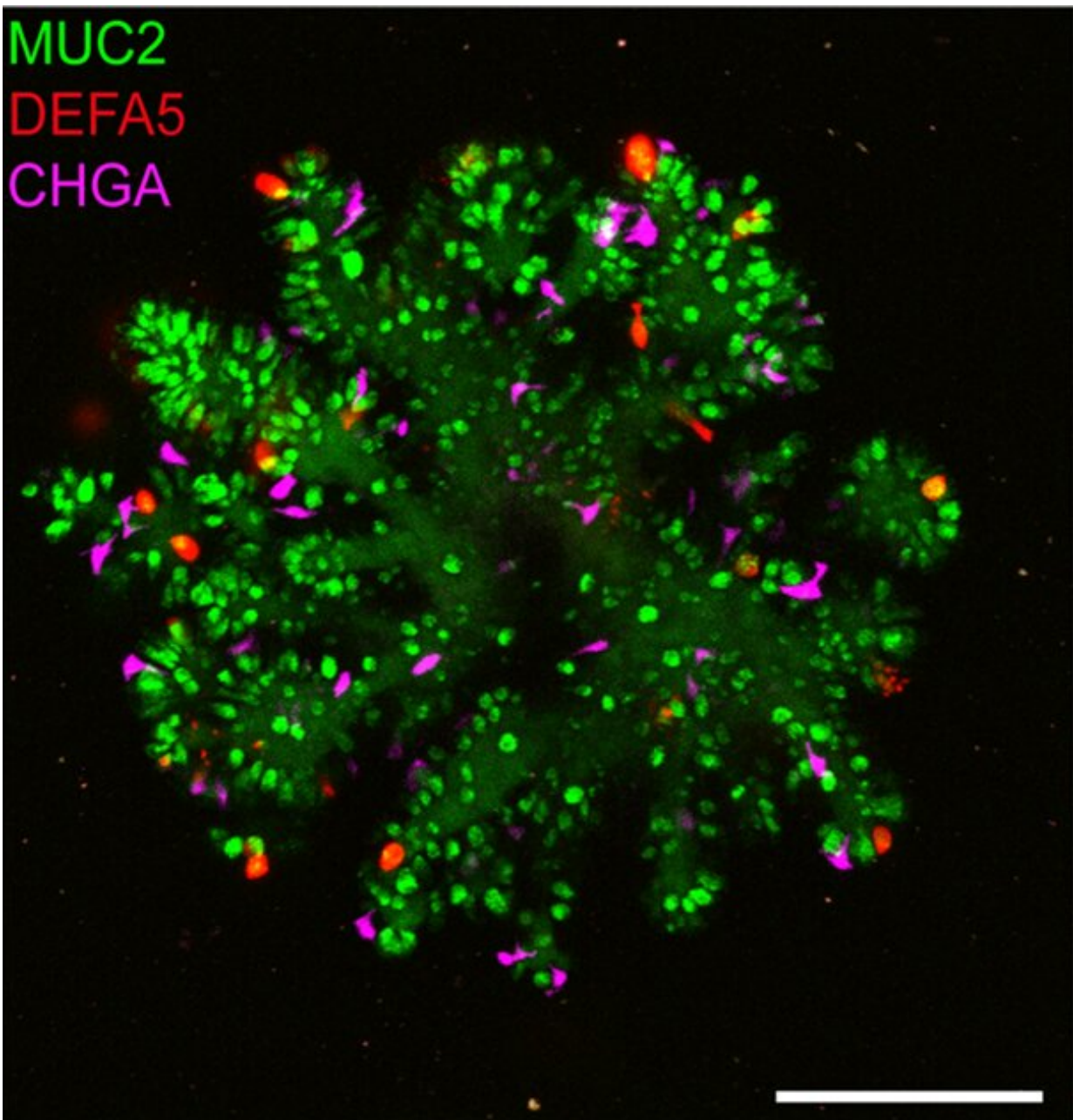


# Optimization of human small intestinal organoids

August 23 2022

---



Improved small intestinal organoid with Paneth cells in red. Credit: Hubrecht Institute

Researchers from the Organoid group (formerly the Clevers group) have improved human small intestinal organoids—miniature versions of the small intestine. This will help them to better study the functioning of the small intestine during health and disease. Specifically, the researchers managed to develop organoids that contain mature Paneth cells, which were not present in the previous human small intestinal organoids. The results of the study were published on 23 August in *Cell Stem Cell*.

The development of organoids has meant a lot for research on the functioning of human organs and tissues. This has to do with the fact that the mini-organs give a good representation of human biology. However, some of the currently available human organoids, such as the small intestinal organoids, do not yet resemble the original organ fully. Researchers from the Organoid group therefore developed a new, optimized version of the miniature [small intestines](#): organoids that include all cell types of the human small intestine.

## Missing Paneth cells

The small intestine contains a wide variety of cells, such as enterocytes, [stem cells](#) and Paneth cells. Together, these cells form a barrier between the side where the food passes and the side where the [blood vessels](#) and [immune cells](#) are. The stem cells in the small intestines continuously create all mature cell types, thereby keeping the barrier in good shape. In particular, Paneth cells are important for preventing infections. They do so by producing [antimicrobial peptides](#) that act against harmful bacteria.

If active Paneth cells are absent, the small intestine will be more prone to infections. This is a problem in several diseases, among which [inflammatory bowel disease](#) (IBD). The previous organoids lacked Paneth cells and did therefore not fully represent healthy human small intestines, while the original mouse organoids described by Toshi Sato in [Nature](#) (2009) were complete. This indicated that there was room for improvement of human organoids.

## Surprising finding

To induce the formation of Paneth cells in human small intestinal organoids, the researchers studied the effect of various molecules. They discovered that the molecule Interleukin-22 (IL-22) increased the numbers and activity of Paneth cells. The effect of IL-22 on Paneth cells is surprising. Researcher Gui-Wei He explains why:

"At the moment, people believe that IL-22 can promote stem cell function. Our study actually showed that IL-22 does not do this, but rather stimulates the activation of Paneth cells." The discovered function of IL-22 was therefore used to increase the numbers of active Paneth cells in human small intestinal organoids. This led to the development of organoids that mimic healthy small intestines.

Now that optimized human small intestinal organoids are available, researchers can expand on what they study. For instance, researchers can use the organoids to make mutations in the DNA of the cells. In this way, they can determine how mutations—occurring in diseases such as IBD—affect the function of the small intestine.

**More information:** Hans Clevers, Optimized human intestinal organoid model reveals interleukin-22-dependency of Paneth cell formation, *Cell Stem Cell* (2022). [DOI: 10.1016/j.stem.2022.08.002](https://doi.org/10.1016/j.stem.2022.08.002). [www.cell.com/cell-stem-cell/fulltext/S0092-9134\(22\)00338-1](https://www.cell.com/cell-stem-cell/fulltext/S0092-9134(22)00338-1)

Provided by Hubrecht Institute

Citation: Optimization of human small intestinal organoids (2022, August 23) retrieved 7 February 2023 from <https://medicalxpress.com/news/2022-08-optimization-human-small-intestinal-organoids.html>

This document is subject to copyright. Apart from any fair dealing for the purpose of private study or research, no part may be reproduced without the written permission. The content is provided for information purposes only.