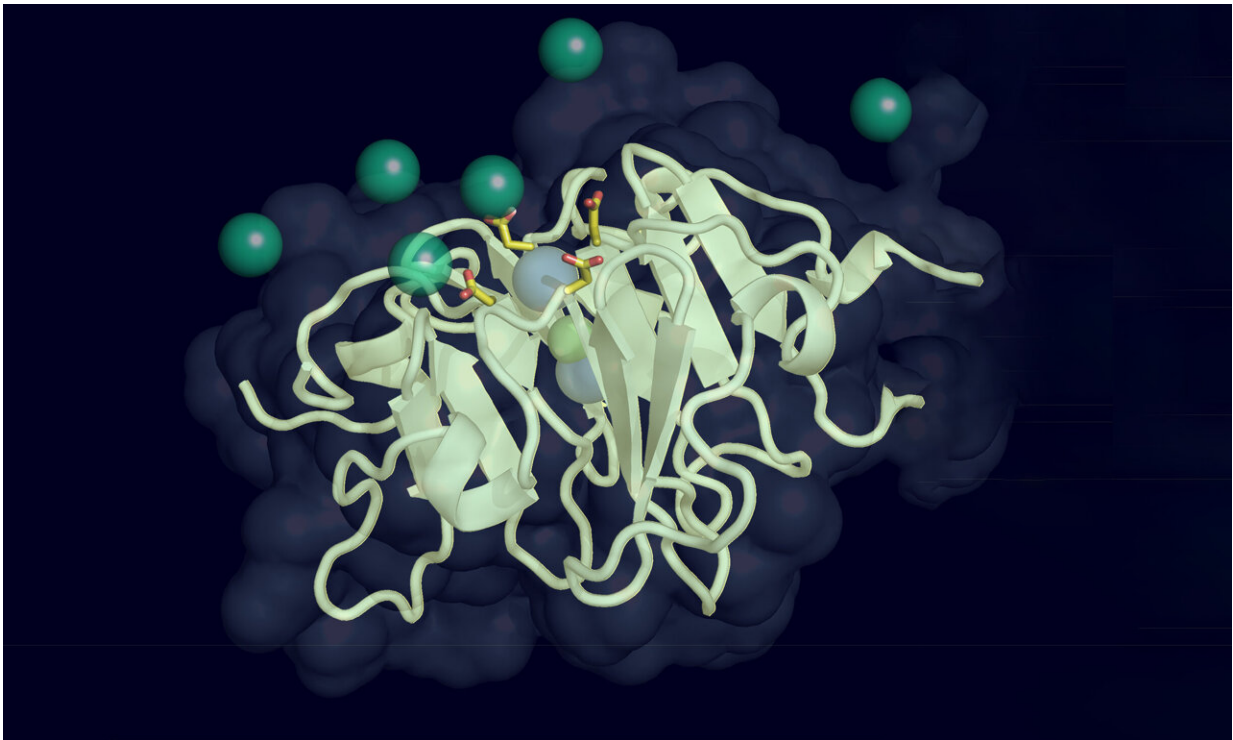


# How a single protein could unlock age-related vision loss

September 7 2022

---



Vitronectin illustration. Credit: Sanford Burnham Prebys/Francesca Marassi

Research led by Sanford Burnham Prebys professor Francesca Marassi, Ph.D., is helping to reveal the molecular secrets of macular degeneration, which causes almost 90% of all age-related vision loss. The study, published recently in the *Biophysical Journal*, describes the flexible structure of a key blood protein involved in macular

degeneration and other age-related diseases, such as Alzheimer's and atherosclerosis.

"Proteins in the [blood](#) are under constant and changing pressure because of the different ways blood flows throughout the body," says Marassi. "For example, blood flows more slowly through [small blood vessels](#) in the eyes compared to larger arteries around the heart. Blood proteins need to be able to respond to these changes, and this study gives us fundamental truths about how they adapt to their environment, which is critical to targeting those proteins for future treatments."

There are hundreds of proteins in our blood, but the researchers focused on vitronectin, one of the most abundant. In addition to circulating in high concentrations in the blood, vitronectin is found in the scaffolding between cells and is also an important component of cholesterol.

Vitronectin is a key player in many age-related diseases, but for Marassi's team, the most promising target is macular [degeneration](#), which affects as many as [11 million people](#) in the United States. This number is expected to double by 2050.

"This [protein](#) is an important target for macular degeneration because it accumulates in the back of the eye, causing vision loss. Similar deposits appear in the brain in Alzheimer's disease and in the arteries in atherosclerosis," says Marassi. "We want to understand why this happens and leverage this knowledge to develop new treatments."

To approach this question, the researchers were interested in learning how the protein changes its structure at different temperatures and under different levels of pressure, approximating what happens in the human body.

"Determining the structure of a protein is the most important part of

determining its function," adds Marassi. Through detailed biochemical analysis, the researchers found that the protein can subtly change its shape under pressure. These changes cause it to bond more easily to [calcium ions](#) in the blood, which the researchers suggest leads to the buildup of calcified plaque deposits characteristic of macular degeneration and other [age-related diseases](#).

"It's a very subtle rearrangement of the molecular structure, but it has a big impact on how the protein functions," says Marassi. "The more we learn about the protein on a structural and mechanistic level, the better chance we have of successfully targeting it with treatments."

These structural insights will streamline the development of treatments for [macular degeneration](#) because it will allow researchers and their partners in the biotech industry to custom-design antibodies that selectively block the protein's calcium binding without disrupting its other important functions in the body.

"It will take some time to convert it into a clinical [treatment](#), but we hope to have a working antibody as a potential treatment in a few years' time," says Marassi. "And since this protein is so abundant in the blood, there may be other exciting applications for this new knowledge that we don't even know about yet."

Additional authors on the study include Ye Tian, Ph.D., Kyungsoo Shin, Ph.D., Alexander E. Aleshin, Ph.D., Sanford Burnham Prebys Medical Discovery Institute and Wonpil Im, Lehigh University.

**More information:** Ye Tian et al, Calcium-induced environmental adaptability of the blood protein vitronectin, *Biophysical Journal* (2022). [DOI: 10.1016/j.bpj.2022.08.044](https://doi.org/10.1016/j.bpj.2022.08.044)

Provided by Sanford Burnham Prebys Medical Discovery Institute

Citation: How a single protein could unlock age-related vision loss (2022, September 7) retrieved 22 April 2023 from

<https://medicalxpress.com/news/2022-09-protein-age-related-vision-loss.html>

This document is subject to copyright. Apart from any fair dealing for the purpose of private study or research, no part may be reproduced without the written permission. The content is provided for information purposes only.