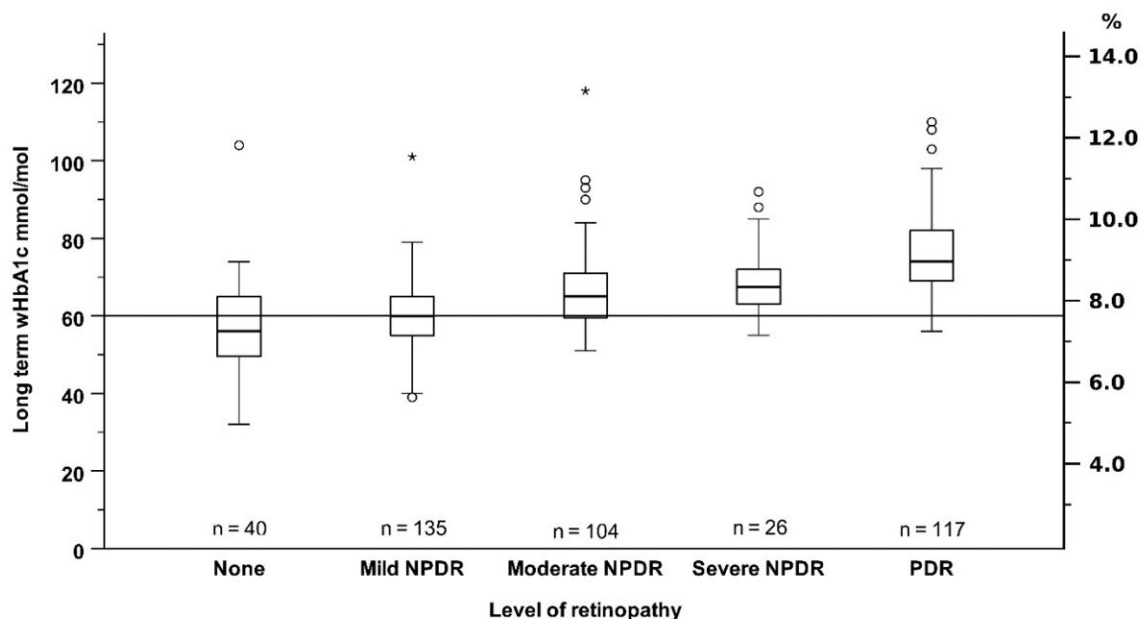


Long-term study determines recommended blood sugar levels to avoid diabetes-related damage

September 12 2022



HbA1c range in the VISS cohort of patients with type 1 diabetes. Boundaries of box plots show quartiles, whiskers show nonoutlier range, unfilled circles show outlier and asterisk shows extremes. A. Different levels of retinopathy, diabetes duration 32(24;34) (median, IQR) years, range 6-36 years. The three patients with no to moderate retinopathy and very high wHbA1c, >11.3% (>100 mmol/mol) had diabetes durations

Citation: Long-term study determines recommended blood sugar levels to avoid diabetes-related

damage (2022, September 12) retrieved 20 November 2023 from
<https://medicalxpress.com/news/2022-09-long-term-blood-sugar-diabetes-related.html>

This document is subject to copyright. Apart from any fair dealing for the purpose of private study or research, no part may be reproduced without the written permission. The content is provided for information purposes only.