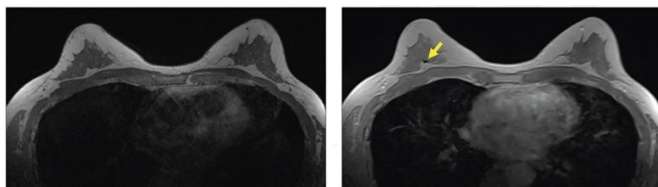


Contrast-enhanced in-phase Dixon sequence impacts biopsy clip detection on breast MRI

14 September 2022



A. Axial T1-weighted non-fat-saturated MR image shows no area of signal void. No reader detected clip using this sequence. B. Axial contrast-enhanced in-phase Dixon image shows signal void in right breast (arrow), which corresponded with MammoMark/CorMark Bread Tie biopsy clip. All three readers detected clip on this sequence, with confidence scores of 4, 3, and 2; assessments all classified as true positives (i.e., detected with confidence score ≥ 2). Credit: ARRS/AJR

According to work published in the *American Journal of Roentgenology*, the contrast-enhanced in-phase Dixon sequence could reduce the need for correlation among other imaging modalities to better identify areas of prior biopsy during breast MRI interpretation.

"Compared with clinical sequences, contrast-enhanced in-phase Dixon had higher sensitivity for detecting [breast](#) biopsy clips on MRI, as well as higher reader confidence and contrast-to-noise ratio (CNR), without change in [positive predictive value](#) (PPV)," wrote corresponding and co-first author, Michael W. Taylor-Cho, MD, MPH, of Duke University Medical Center in Durham, NC.

Dr. Taylor-Cho and team's retrospective study numbered 164 women (mean age, 50.3 years) with a total of 281 breast biopsy clips who underwent contrast-enhanced breast MRI between January 2, 2019, and April 16, 2020.

Blinded to patient identifiers, sequence information, and biopsy clip details, three radiologists independently annotated their findings on three clinical sequences—T1-weighted (T1W) non-fat-suppressed (NFS), STIR, first phase from dynamic contrast-enhanced T1W fat-suppressed (FS)—as well as contrast-enhanced in-phase Dixon. Confidence was then recorded on a scale of 1–4.

Ultimately, compared with T1W NSF, STIR, and T1WFS sequences, the contrast-enhanced in-phase Dixon sequence evidenced the highest sensitivity for breast [biopsy](#) clip detection (85.1% vs. 26.6%-78.2%), highest reader confidence (3.5 vs. 1.7–3.0), and highest CNR (4.05 vs 0.54–1.21), without a significant difference in PPV (96.4% vs. 92.2%–96.1%).

Employing this contrast-enhanced in-phase Dixon sequence may "help address a current challenge in routine clinical breast MRI interpretation," the authors of this article concluded.

More information: Michael W. Taylor-Cho et al, Contrast-Enhanced In-Phase Dixon Sequence: Impact on Biopsy Clip Detection on Breast MRI, *American Journal of Roentgenology* (2022). [DOI: 10.2214/AJR.22.28024](https://doi.org/10.2214/AJR.22.28024)

Provided by American Roentgen Ray Society

APA citation: Contrast-enhanced in-phase Dixon sequence impacts biopsy clip detection on breast MRI (2022, September 14) retrieved 7 November 2022 from <https://medicalxpress.com/news/2022-09-contrast-enhanced-in-phase-dixon-sequence-impacts.html>

This document is subject to copyright. Apart from any fair dealing for the purpose of private study or research, no part may be reproduced without the written permission. The content is provided for information purposes only.