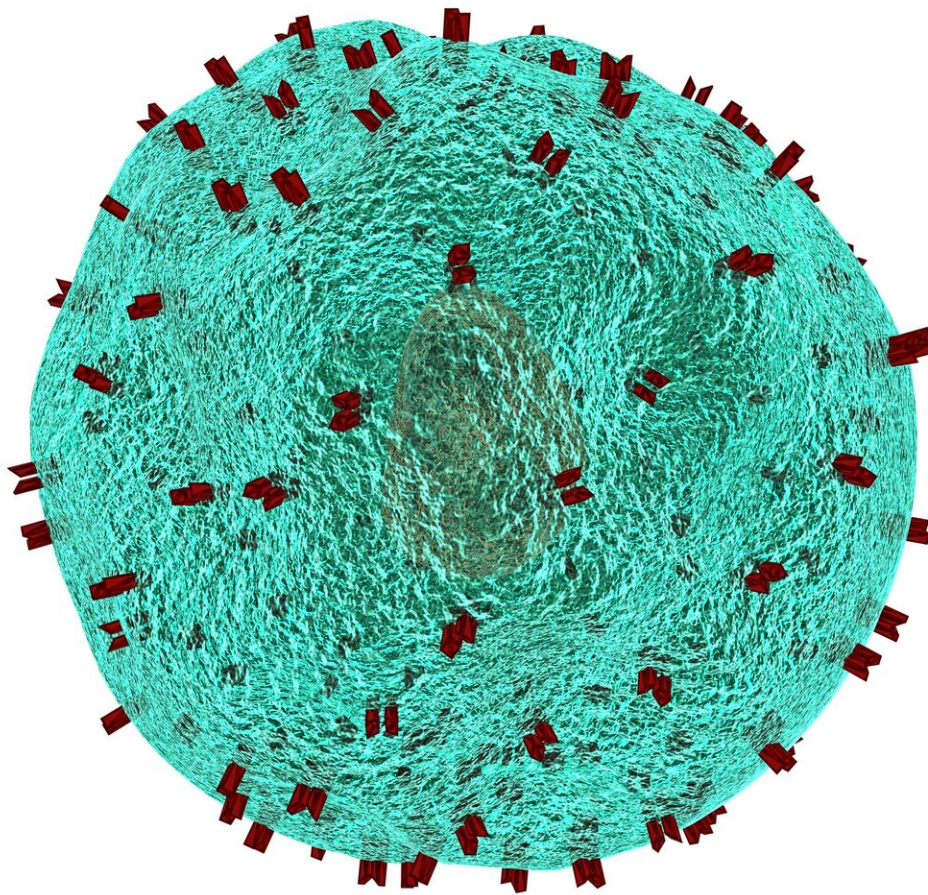


CAR T-cell therapy proves effective in first trial in patients with resistant multiple myeloma

September 29 2022



Credit: CC0 Public Domain

A therapy made of immune system T cells engineered to target a somewhat enigmatic cell protein called GPRC5D antigen produced impressive results in its first clinical trial in patients with multiple myeloma, researchers at Memorial Sloan Kettering Cancer Center (MSK), Dana-Farber Cancer Institute and Roswell Park Comprehensive Cancer Center report in a new study published today by the *New England Journal of Medicine*.

The patients were treated at MSK during the clinical trial and the CAR T cell manufacturing was performed at the institution's Cell Therapy Cell Engineering Facility (CTCEF).

"It's a novel cellular-therapy approach for multiple [myeloma](#) that, in this first small study, demonstrated a strong response rate in patients, even those who were previously treated with other CAR T calls targeted to another antigen, BCMA," says Renier Brentjens, MD, Ph.D., Deputy Director and the Katherine Anne Gioia Endowed Chair in Cancer Medicine at Roswell Park and a co-senior author on the study.

"It's a proof-of-principle study, but these results provide a rationale for not just infusing a single population of CAR T cells but using several populations that may be targeted to different proteins on the surface of the tumor cell."

The therapy, a [chimeric antigen receptor](#) (CAR) T-cell therapy, sparked remissions in 70.6% of the 17 patients in the trial, all of whom had myeloma that had relapsed or was resistant to previous therapies, report

the study authors. Many of the responders had relapsed after treatment with a previous generation of CAR T-cell therapies, which target a cell antigen known as BCMA. The findings have spurred the opening of a larger trial of the new therapy, which targets an antigen known as GPRC5D, in patients with myeloma.

"CAR T-cell therapy is one of the most promising ways to treat cancer," says [Sham Mailankody, MBBS](#), first author and principal investigator for the clinical trial at MSK. "While the clinical trial is still in early stages, we are encouraged by the results as post-treatment tests are showing that six participants had a complete response to the treatment and twelve of the patients are showing a measurable decline in their cancer."

"CAR T-cell therapies targeting BCMA [the B cell maturation antigen]—a protein prevalent on immune system B cells—have shown promise in advanced myeloma, but many patients relapse," says Eric L. Smith, MD, Ph.D., of Dana-Farber, co-senior author of the study along with Dr. Brentjens.

"We developed CAR T cells targeting an antigen that we identified—called G protein-coupled receptor, class C group 5 member D, or GPRC5D—which were effective in the laboratory against myeloma cells and in animal models of the disease, including those that no longer responded to BCMA-targeting CAR T cells. Our phase 1 study represents the first time this second-generation CAR T-cell therapy has been tested in patients."

Like most CAR T-cell therapies, the one reported in this study, and developed at MSK, is custom-made for each patient. Millions of T cells are collected from the patient's blood and equipped with a synthetic gene that lets them lock onto a specific protein on cells—in this case, the GPRC5D antigen. The genetically enhanced cells are then infused back into the patient, where they lead an attack on cells carrying the antigen.

"Our preclinical work showed GPRC5D to be an attractive target for a CAR T-cell therapy for multiple myeloma," adds Dr. Smith. "We found it to be especially abundant on myeloma cells compared to normal tissue."

The GPRC5D antigen is something of a mystery, as its role in normal cell life is unclear. Still, when researchers probed the surface of myeloma cells for proteins that were particularly plentiful, GPRC5D stood out.

The 17 patients in the phase 1 trial at MSK had undergone a median of six prior treatments for myeloma, including several who had received CAR T-cell therapy targeting BCMA. Four dose levels of the second-generation CAR T-cell therapy were tested.

The study showed the therapy to be generally safe, with side effects comparable to those associated with BCMA-directed CAR T-cell therapies. Fifteen of the participants experienced cytokine release syndrome (CRS), a common, temporary consequence of CAR T-cell treatment marked by systemic inflammation.

In all cases but one (in a patient who received the highest dose tested) CRS was mild or moderate. At the highest dose level, two patients experienced toxicity in the cerebellum of the brain. No patients died from adverse events associated with the treatment.

Post-treatment tests showed that 12 participants, representing 70.6% of the whole group, responded to the treatment, showing a measurable decline in their cancer. Six had a complete response, an absence of detectable cancer. Two of the patients are still showing a response to the therapy, more than a year after they were treated.

"We are very grateful to our patients and caregivers who participated in

this early trial and are continuing to explore additional clinical trials of GPRC5D directed CART cells in combination with other promising treatments to improve outcomes for [patients](#) with this disease," adds Dr. Mailankody.

More information: Sham Mailankody et al, GPRC5D-Targeted CAR T Cells for Myeloma, *New England Journal of Medicine* (2022). [DOI: 10.1056/NEJMoa2209900](https://doi.org/10.1056/NEJMoa2209900)

Provided by Roswell Park Comprehensive Cancer Center

Citation: CAR T-cell therapy proves effective in first trial in patients with resistant multiple myeloma (2022, September 29) retrieved 27 December 2022 from <https://medicalxpress.com/news/2022-09-car-t-cell-therapy-effective-trial.html>

This document is subject to copyright. Apart from any fair dealing for the purpose of private study or research, no part may be reproduced without the written permission. The content is provided for information purposes only.