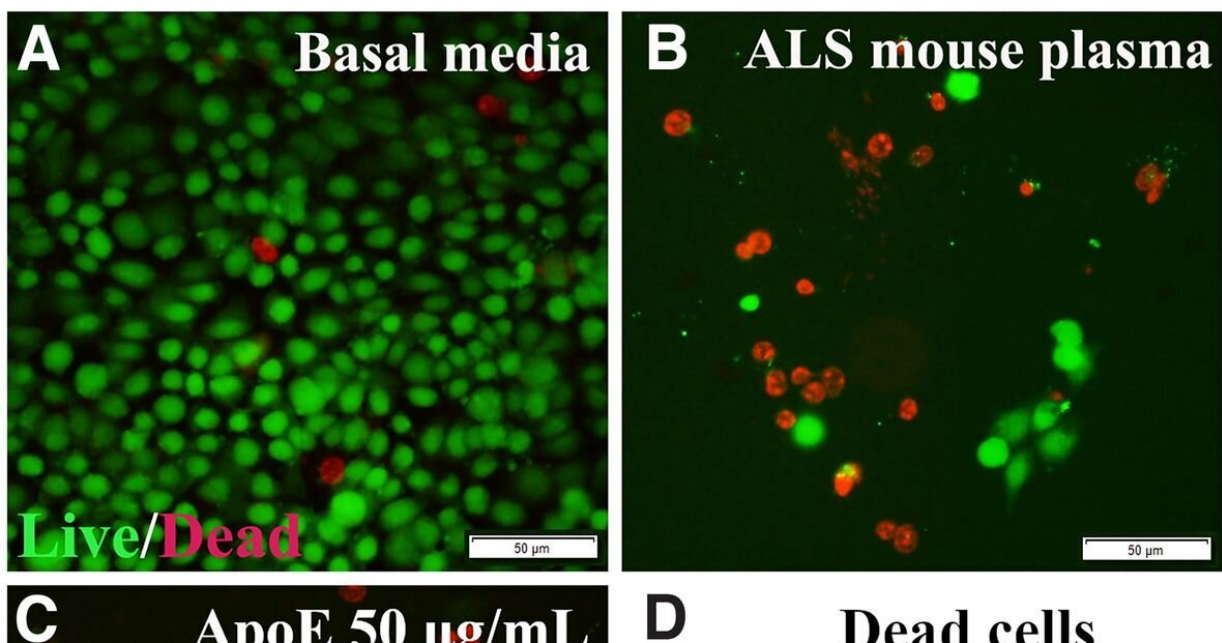


Researchers advance efforts to develop protein-based treatment therapy for individuals with ALS

October 4 2022

Mouse brain endothelial cells in vitro: Apolipoprotein E



Effect of ApoE on mBEC viability after ALS mouse plasma exposure in vitro. A, Numerous viable (green) mBECs were observed in cultures with basal media. B, Dead (red) cells significantly increased after exposure to 3% ALS mouse plasma. C, Adding 50 µg/ml of ApoE to culture media with ALS plasma did not reduce dead cells. Scale bar: 50 µm (A-C). D, Statistical analyses reflect imaging; **p

Citation: Researchers advance efforts to develop protein-based treatment therapy for individuals with ALS (2022, October 4) retrieved 4 January 2023 from <https://medicalxpress.com/news/2022-10-advance-efforts-protein-based-treatment-therapy.html>

This document is subject to copyright. Apart from any fair dealing for the purpose of private study or research, no part may be reproduced without the written permission. The content is provided for information purposes only.