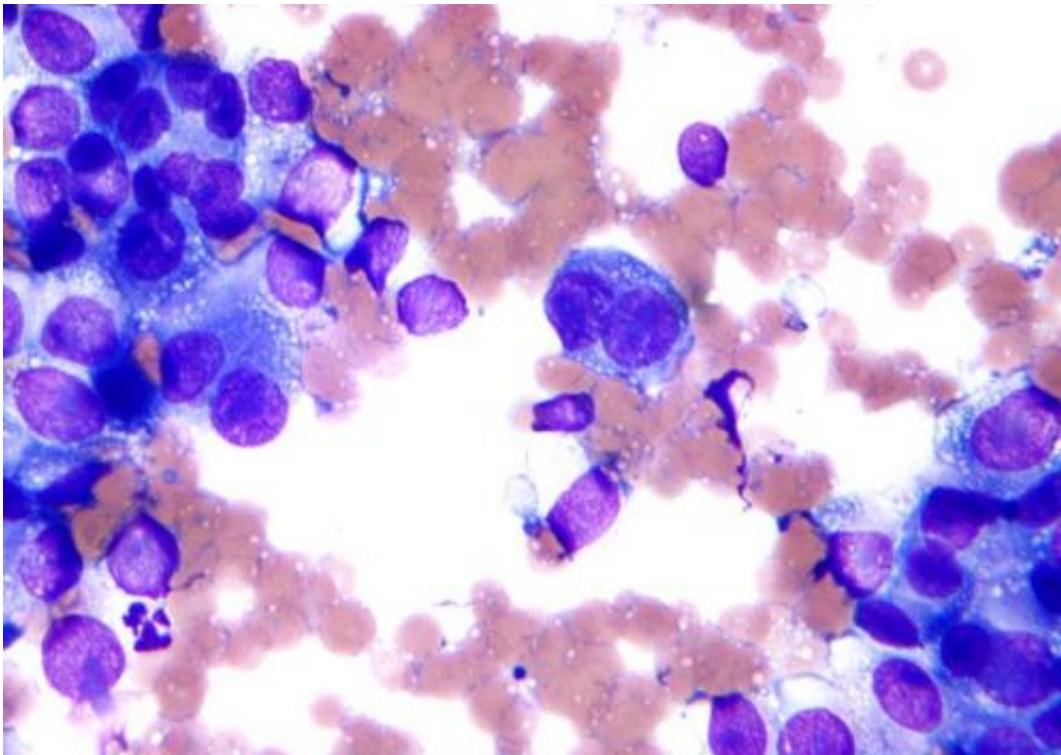


# An AI model reveals how the body's defense system recognizes skin cancer

October 7 2022

---



Micrograph of malignant melanoma. Cytology specimen. Field stain. Credit: Nephron/Wikipeida

Researchers from the University of Helsinki, HUS Comprehensive Cancer Center, Aalto University and Stanford University have developed an artificial intelligence model that predicts which skin cancer patients will benefit from a treatment that activates the immune defense system. In practice, the AI model makes it possible to diagnose skin cancer with

a blood test, determine the prognosis and target therapies increasingly accurately.

The [skin cancer](#)-related study was published in the *Nature Communications* journal.

### **The right medication for the right patient**

Boosting the body's own defense system has proven to be a particularly effective therapy for skin cancer. The problem with therapies that activate the [immune system](#) are the differences between patient groups: while some patients can be said to be cured, others gain no benefit from the treatment at all.

"Prior research has been unable to provide doctors with tools that would predict who will benefit from treatment that activates the defense system. The correct targeting of therapies is extremely important, since drug therapies are expensive and serious adverse effects fairly common," says doctor and Doctoral Researcher Jani Huuhtanen from the University of Helsinki and Aalto University.

### **A complex AI model for a straightforward question**

The international research group hypothesized that the immune cells of patients for whom the therapy was ineffective do not recognize skin cancer as an enemy, which is why the patients do not benefit from the treatment.

Using the AI model, the group analyzed samples from nearly 500 skin cancer patients and compared them with the samples of almost 1,000 healthy individuals. To aid interpretation, the researchers used another AI model developed by Mark M. Davis lab in Stanford University. From these samples, the researchers simply calculated the number of immune

cells that recognized skin cancer.

As expected, more skin cancer–sensing defensive cells were found in patients with melanoma than in healthy patients.

"This finding may in the future make it possible to identify skin cancer from a [blood sample](#)," says Professor of Translational Hematology Satu Mustjoki from the University of Helsinki.

In addition, skin cancer patients who had more defensive cells that recognized skin cancer were more likely to benefit from therapies that activate the immune system than those lacking such cells.

### **Focusing the AI model on other cancer types**

The use of AI models in medicine has grown exponentially, but applying them in [patient care](#) requires long-term collaboration between doctors and researchers specializing in artificial intelligence.

"In future studies, our aim is to explore the utilization of the AI model now developed and investigate whether it can predict treatment responses also for novel cancer drug therapies still in development," says Associate Professor of Computational Biology and Machine Learning Harri Lähdesmäki from Aalto University.

"Our AI model is agile and adaptable, making it possible to calculate the number of cancer-sensing defensive cells also in the case of other cancers, including [breast cancer](#), [lung cancer](#) and blood cancers," Jani Huuhtanen adds.

"All of our research is based on [open-source software](#), which makes our AI model available to other researchers and doctors, also enabling its further development," says Huuhtanen.

Provided by University of Helsinki

Citation: An AI model reveals how the body's defense system recognizes skin cancer (2022, October 7) retrieved 18 January 2023 from <https://medicalxpress.com/news/2022-10-ai-reveals-body-defense-skin.html>

This document is subject to copyright. Apart from any fair dealing for the purpose of private study or research, no part may be reproduced without the written permission. The content is provided for information purposes only.