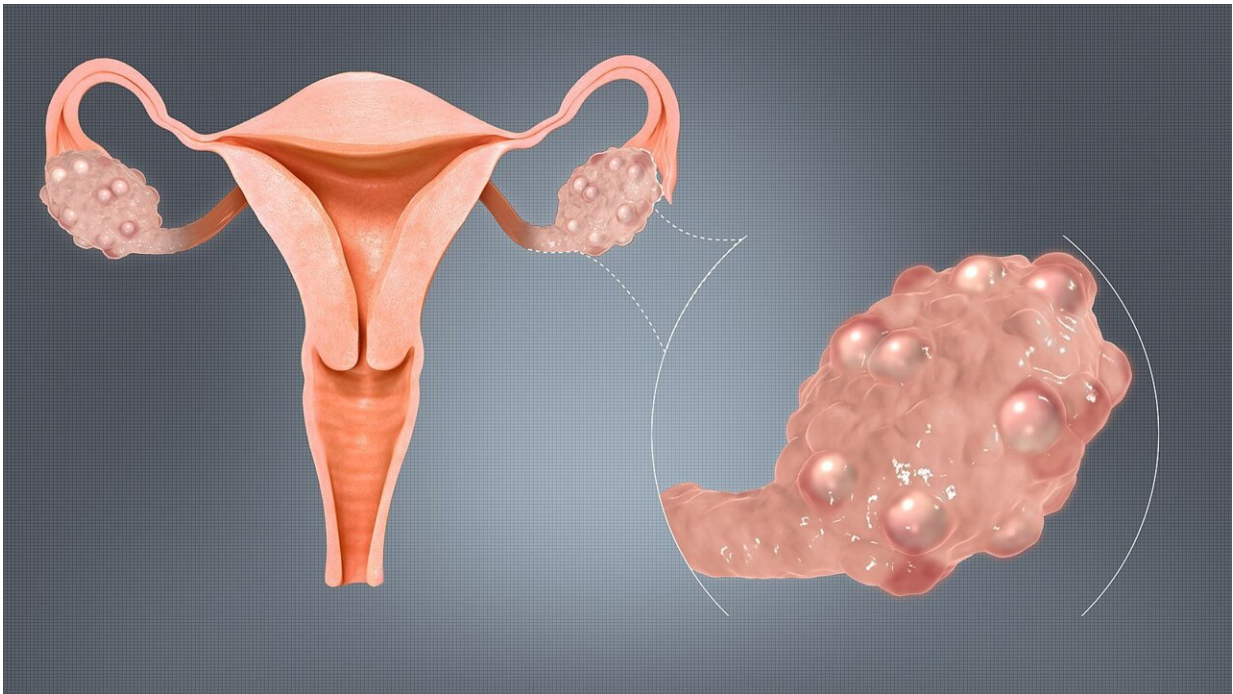


Women may experience different PCOS symptoms depending on where they live

October 11 2022



Credit: <http://www.scientificanimations.com>, CC BY-SA 4.0 , via Wikimedia Commons

Women with polycystic ovary syndrome (PCOS) in Alabama may be more likely to have excessive hair growth and insulin resistance, whereas women with PCOS in California may be more likely to have higher testosterone levels, according to new research published in *The Journal of Clinical Endocrinology & Metabolism*.

PCOS affects 7–10% of [women of childbearing age](#) and is the most common cause of infertility. In the United States, an estimated 5 to 6 million women have PCOS, but the disorder is still underdiagnosed. Women are diagnosed with PCOS if they have two of the following criteria: androgen excess (excess male sex hormones such as testosterone), ovulatory dysfunction and polycystic ovaries.

"Our study found [geographical differences](#) in PCOS in black and white women, suggesting there are both genetic and environmental influences on how this disease manifests," said Margareta D. Pisarska, M.D., of Cedars-Sinai Medical Center in Los Angeles, Calif. "Ongoing research is needed to identify modifiable risk factors for PCOS that may be race and ethnicity-specific to bring precision medicine to the management of this disease."

The researchers compared data from 1,620 black and white women with PCOS in Alabama and California. They found [regional differences](#) in the way these women met criteria for the diagnosis of PCOS and in symptoms associated with PCOS, with some variations among black and white women.

Overall, there were many similarities among the races. Women with PCOS in Alabama were more likely to have excessive hair growth and [insulin resistance](#), whereas women with PCOS in California were more likely to have higher levels of testosterone.

When comparing [black women](#) with PCOS in Alabama and California, the average body mass index (BMI) did not differ between the locations, whereas in white women with PCOS, the average BMI was higher in Alabama than California.

"Since we have now identified that there are geo-epidemiologic differences, we intend to do follow up studies comparing black and

[white women](#) with PCOS, controlling for geo-epidemiologic differences," Pisarska said. "Furthermore, we are trying to look at factors that are contributing to these differences in order to tailor treatments based on specific needs for improvements in care for all women with PCOS."

More information: Katherine VanHise et al, Regional Variation in Hormonal and Metabolic Parameters of White and Black Women With PCOS in the United States, *The Journal of Clinical Endocrinology & Metabolism* (2022). doi.org/10.1210/clinem/dgac515

Provided by The Endocrine Society

Citation: Women may experience different PCOS symptoms depending on where they live (2022, October 11) retrieved 16 January 2023 from <https://medicalxpress.com/news/2022-10-women-pcos-symptoms.html>

This document is subject to copyright. Apart from any fair dealing for the purpose of private study or research, no part may be reproduced without the written permission. The content is provided for information purposes only.