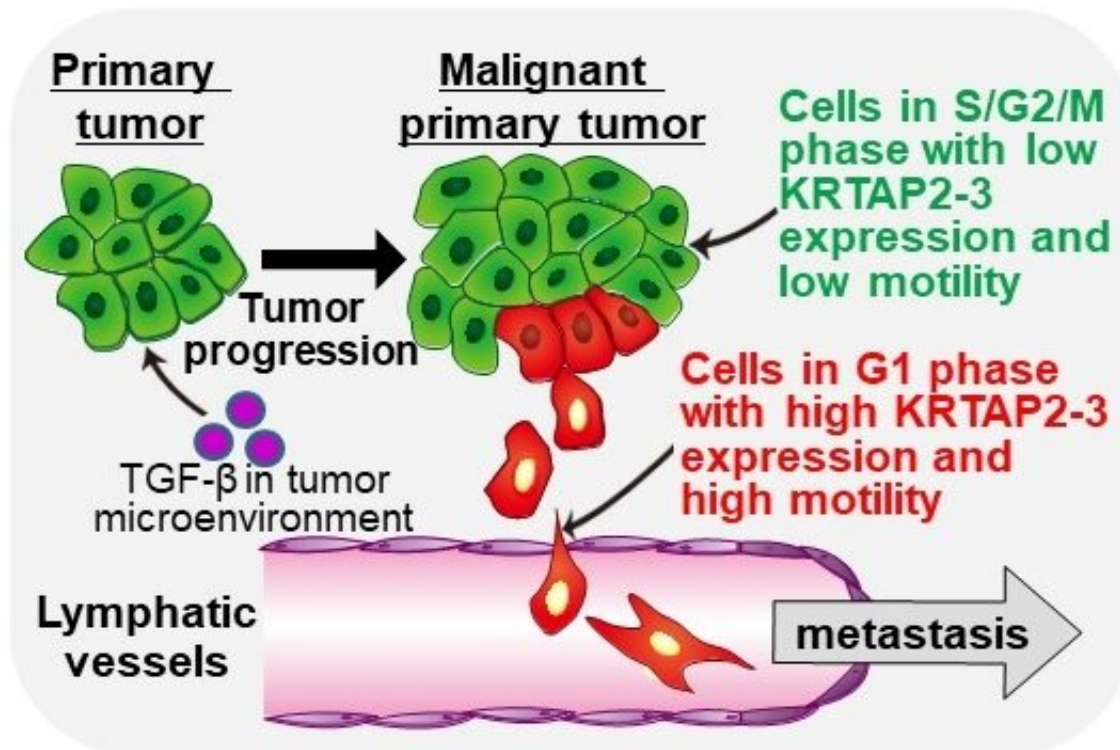


Stopping the spread: Targeting tumor metastasis

October 18 2022



Takahashi et al. show that TGF- β generates a population of cancer cells under cell cycle arrest in G1 phase with high motility by inducing unique Slug/HMGA2-independent epithelial-mesenchymal transition (EMT). This leads to tumor progression and poor prognosis for patients with head and neck cancer. Credit: Department of Biochemistry, TMDU

The process of metastasis is when cancer cells gain motility and spread to other sites of the body. Because this is one of the main causes of

cancer-related deaths, researchers have aimed to develop therapeutic strategies that can block metastasis. In a recent article published in *Cell Reports*, a team led by researchers at Tokyo Medical and Dental University (TMDU) describe how a cell signaling molecule called transforming growth factor- β (TGF- β) can help oral cancer cells acquire such dangerous motility.

Epithelial-mesenchymal transition (EMT) occurs when [cancer cells](#) obtain more stem-like and invasive properties, and is induced by various signals and stimuli within the [tumor microenvironment](#). The group focused on the signaling molecule TGF- β as its reported effects seem contradictory: TGF- β can induce EMT in cancer cells but also seems to block their proliferation by keeping them in an early phase of the cell division cycle called G1. Therefore, the researchers aimed to characterize the molecular details of these mechanisms at the single-cell level.

"It is not fully clear if [tumor cells](#) stimulated by TGF- β can display both EMT induction and cell cycle arrest," says lead author of the study Kazuki Takahashi. "Single-cell analysis will help us understand if these events occur in distinct cell populations."

To examine this, the team utilized specially engineered versions of oral cancer cells that fluoresce red if they are in the G1 phase or green if they are in any other cell cycle phase. The number of red cells increased when the culture was treated with TGF- β , implying more cells in G1. When examining [cell migration](#) in response to TGF- β , most cells that migrated also showed G1 arrest, suggesting a correlation between the two phenotypes.

"We then used a technique called single-cell RNA sequencing to examine [gene expression](#) in individual oral cancer cells treated with TGF- β ," explains Tetsuro Watabe, senior author of the article. "Interestingly,

these experiments showed that TGF- β can induce EMT in these cells through two different pathways."

The cells in EMT that showed G1 arrest were a distinct population from those without arrest. Further work showed that these cells were associated with expression of keratin-associated protein 2-3 (KRTAP2-3) which was also observed in the migrated cells.

"Survival analysis indicated that head and neck squamous cell carcinoma patients with high KRTAP2-3 levels had poorer overall survival, suggesting KRTAP2-3 is a prognostic biomarker for this cancer," says Katarzyna Podyma-Inoue, lead author of the study.

Overall, these data provide important molecular details of the complex nature of TGF- β in oral cancer cells. By uncovering these mechanisms through single-cell analysis, this research offers crucial information that will help in the development of therapeutic methods targeting metastasis.

More information: Kazuki Takahashi et al, TGF- β generates a population of cancer cells residing in G1 phase with high motility and metastatic potential via KRTAP2-3, *Cell Reports* (2022). [DOI: 10.1016/j.celrep.2022.111411](https://doi.org/10.1016/j.celrep.2022.111411)

Provided by Tokyo Medical and Dental University

Citation: Stopping the spread: Targeting tumor metastasis (2022, October 18) retrieved 13 February 2023 from <https://medicalxpress.com/news/2022-10-tumor-metastasis.html>

This document is subject to copyright. Apart from any fair dealing for the purpose of private study or research, no part may be reproduced without the written permission. The content is

provided for information purposes only.