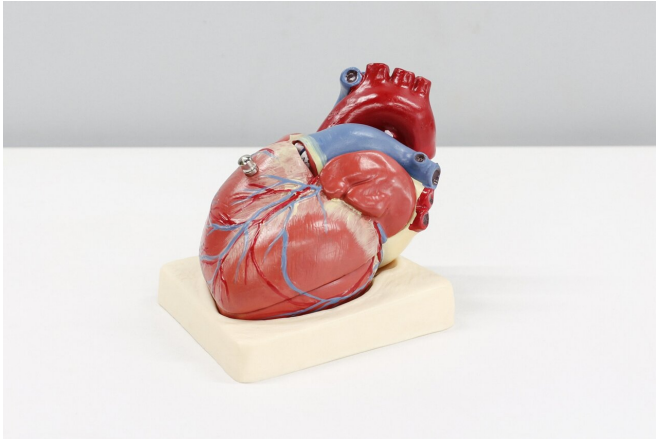


Study finds racial disparities in advanced heart failure treatment

19 October 2022



Credit: Unsplash/CC0 Public Domain

Black adults treated at advanced heart failure centers received potentially life-changing therapies, such as transplants and heart pumps, about half as often as white adults, possibly due to racial bias, a small National Institutes of Health-supported study has found.

Researchers followed 377 patients receiving treatment at one of 21 centers in the United States and found that 62 of 277 white adults (22%) received a [heart transplant](#) or ventricular assist device (VAD), a mechanical device that pumps blood for the heart. In comparison, 11 of 100 Black adults (11%) received these end-stage [heart failure](#) therapies, which can extend and improve a patient's quality of life.

The researchers said the findings, which appear in *Circulation: Heart Failure*, underscore the importance in strengthening equity in clinical decision-making for the 600,000 Americans—particularly Black adults—who have end-stage heart failure. Prior studies have shown Black adults have a greater risk for heart failure and are twice as likely to die from it.

"The lives disabled or lost are simply too many," said Wendy C. Taddei-Peters, Ph.D., a study author and [clinical trials](#) project official within the Division of Cardiovascular Sciences at the National Heart, Lung, and Blood Institute (NHLBI). "An immediate step could be to require implicit bias training, particularly for transplant and VAD team members."

The findings are from the Registry Evaluation of Vital Information for VADs in Ambulatory Life (REVIVAL), an observational two-year study supported by NHLBI to better understand the course of heart failure. This part of the study expands on previous research analyzing disparities in advanced heart failure treatment.

For their analysis, the researchers controlled for multiple factors, including disease severity, quality of life, and several social determinants of health, or conditions within the environment where people live that affect health outcomes. They did not find associations between the patients' race and death rates. Eighteen Black adults (18%) and 36 white adults (13%) died during the study.

Importantly, they found that treatment preferences between the two groups were similar. Yet, being Black was associated with a 55% reduced rate for receiving VAD therapy or a heart transplant.

The researchers said the findings expanded on their current understanding of disparities in heart failure treatment by showing that patient treatment preferences did not drive the inequities. They added that the notable disparity in treatment that Black and white patients actually received, and the researchers' inability to explain it by other measures, suggested unconscious bias—and even overt racism and discrimination—among health care providers and within the health care system itself had likely come into play.

"The totality of the evidence suggests that we as

heart failure providers are perpetuating current inequities," said Thomas M. Cascino, M.D., the first study author and a clinical instructor in the Division of Cardiovascular Disease at the University of Michigan at Ann Arbor. "However, recognizing disparities isn't enough. As physicians and health care providers, we must find ways to create equitable change."

[DOI: 10.1161/CIRCHEARTFAILURE.122.009745](https://doi.org/10.1161/CIRCHEARTFAILURE.122.009745)

Provided by NIH/National Heart, Lung and Blood Institute

In addition to recommending training to help health care professionals become aware of their biases, the researchers suggest studying ways to standardize advanced heart failure therapy. Using patient registries to identify when and where disparities in [clinical care](#) occur could be a start.

Typically, physicians refer patients for advanced heart failure therapy after assessing multiple factors, such as the patient's cognitive function, their likelihood of taking medication, and the caregiving help they may receive after treatment.

To support uniformity in these assessments and other aspects of clinical care, the researchers said medical centers could partner with "disparity experts" who could join cardiology team meetings and identify pivotal decision-making points where bias may creep in.

"Disparity experts can identify these biases and barriers in real-time, provide learning opportunities, and promote equity," Taddei-Peters said. "This can be especially valuable for centers where the demographics of [health care providers](#) may not reflect the patients they serve."

The Centers for Disease Control and Prevention estimates that 6.2 million Americans have heart failure. Common symptoms may include shortness of breath, swelling in the lower body, such as the legs and ankles, and feeling tired. Underlying risk factors for heart failure, such as diabetes, can also disproportionately affect Black, American Indian and Alaska Native, and Hispanic adults.

More information: Thomas M. Cascino et al, Racial Inequities in Access to Ventricular Assist Device and Transplant Persist After Consideration for Preferences for Care: A Report From the REVIVAL Study, *Circulation: Heart Failure* (2022).

APA citation: Study finds racial disparities in advanced heart failure treatment (2022, October 19) retrieved 16 November 2022 from <https://medicalxpress.com/news/2022-10-racial-disparities-advanced-heart-failure.html>

This document is subject to copyright. Apart from any fair dealing for the purpose of private study or research, no part may be reproduced without the written permission. The content is provided for information purposes only.