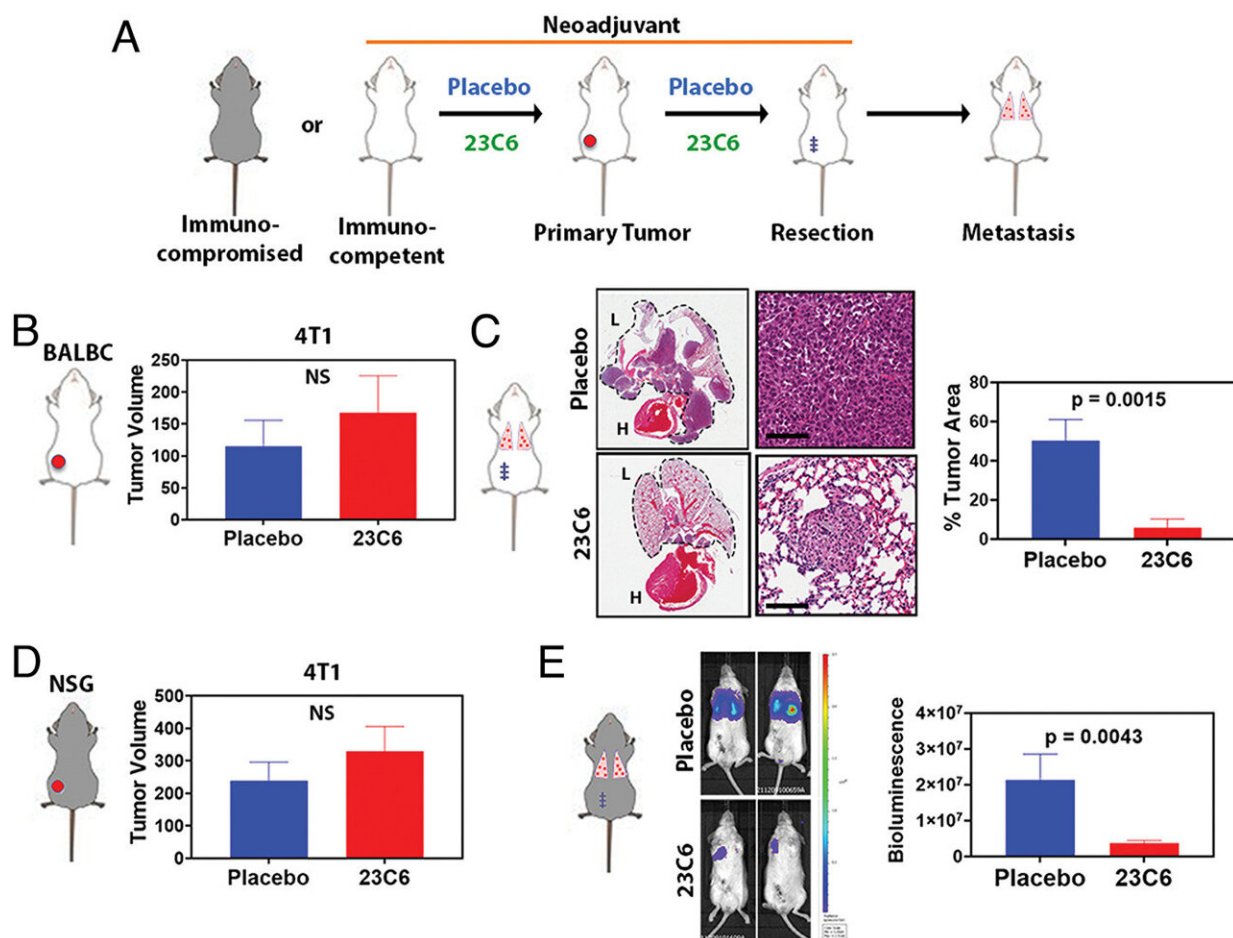


Antibody-based therapy eliminates circulating tumor cells in mouse models of breast and pancreatic cancer

October 20 2022, by Katie Marquedant



(A) Schema for the mouse models of neoadjuvant placebo or 23C6 treatment. (B) Tumor volume measurements of 4T1 orthotopic mammary gland tumors in BALBC immunocompetent mice treated with placebo or 23C6 antibody at day 20 prior to resection (n = 5 to 6 mice per treatment arm). (C) Representative

H&E sections of lung and heart whole mount (lungs outlined with dashed line) in placebo and 23C6 treated mice. High magnification section of representative lung metastases. Right panel with quantified percentage tumor area (n = 5 to 6 mice per treatment arm). (D) Tumor volume measurements of 4T1 orthotopic mammary gland tumors in NSG immunocompromised mice treated with placebo or 23C6 antibody at day 20 prior to resection (n = 5 to 6 mice per treatment arm). (E) Representative whole body bioluminescent images in placebo and 23C6 treated mice. (Right) Quantification of total body bioluminescent imaging (n = 5 to 6 mice per treatment arm). Error bars represent SEM. P values calculated by unpaired Mann–Whitney tests. Credit: *Proceedings of the National Academy of Sciences* (2022). DOI: 10.1073/pnas.2209563119

Investigators have designed an antibody-based treatment that eliminated circulating tumor cells (CTCs) in mouse models of breast and pancreatic cancer. The research, which was led by scientists at Massachusetts General Hospital (MGH) and is published in *PNAS*, represents a promising strategy to halt the spread of cancer.

To develop antibody-based therapies that can destroy cancer cells, researchers must identify [cell surface proteins](#) that distinguish [cancer cells](#) from surrounding [normal cells](#). In contrast to [tumor cells](#) that arise in a particular organ or tissue, CTCs that are spreading, or metastasizing, through the blood are in an environment of cells that are much different than they are, which expands the number of targetable proteins for scientists to identify. Investigators found that cadherins—transmembrane proteins that normally mediate cell–cell adhesion—are great candidates in this case.

An antibody (called 23C6) against cadherins effectively suppressed blood-borne metastasis in mouse models of pancreatic and triple negative breast cancers. The 23C6 antibody recognizes two different cadherins that are commonly expressed on different types of CTCs.

Despite its efficacy against [single cells](#) in circulation, the antibody does not suppress the formation of tumors, nor does it elicit detectable toxicity in normal organs, where cadherins may be located within structures connecting cells and hence are inaccessible for antibody binding.

"This therapy may be more effective at targeting CTCs because these antibodies have better access to the circulating cells traveling in the bloodstream and are highly specific to CTCs compared with surrounding blood cells," says co-author David T. Ting, MD, Associate Clinical Director for Innovation at the MGH Cancer Center and an Associate Professor of Medicine at Harvard Medical School.

The research raises the possibility of developing antibody-based therapies to target CTCs to suppress blood-borne metastasis, which is the predominant cause of cancer mortality. "While metastasis is the major source of lethality in solid tumors, there are no currently approved therapies that specifically target the metastatic process or the subset of invasive cells responsible for cancer spread," says Ting. "The results suggest that our approach could be effective at targeting diverse types of CTCs. With more research and development, therapies that use this approach could be used to prevent cancers from spreading and improve long term survival."

More information: Douglas S. Micalizzi et al, Targeting breast and pancreatic cancer metastasis using a dual-cadherin antibody, *Proceedings of the National Academy of Sciences* (2022). [DOI: 10.1073/pnas.2209563119](https://doi.org/10.1073/pnas.2209563119)

Provided by Massachusetts General Hospital

Citation: Antibody-based therapy eliminates circulating tumor cells in mouse models of breast and pancreatic cancer (2022, October 20) retrieved 26 February 2023 from <https://medicalxpress.com/news/2022-10-antibody-based-therapy-circulating-tumor-cells.html>

This document is subject to copyright. Apart from any fair dealing for the purpose of private study or research, no part may be reproduced without the written permission. The content is provided for information purposes only.