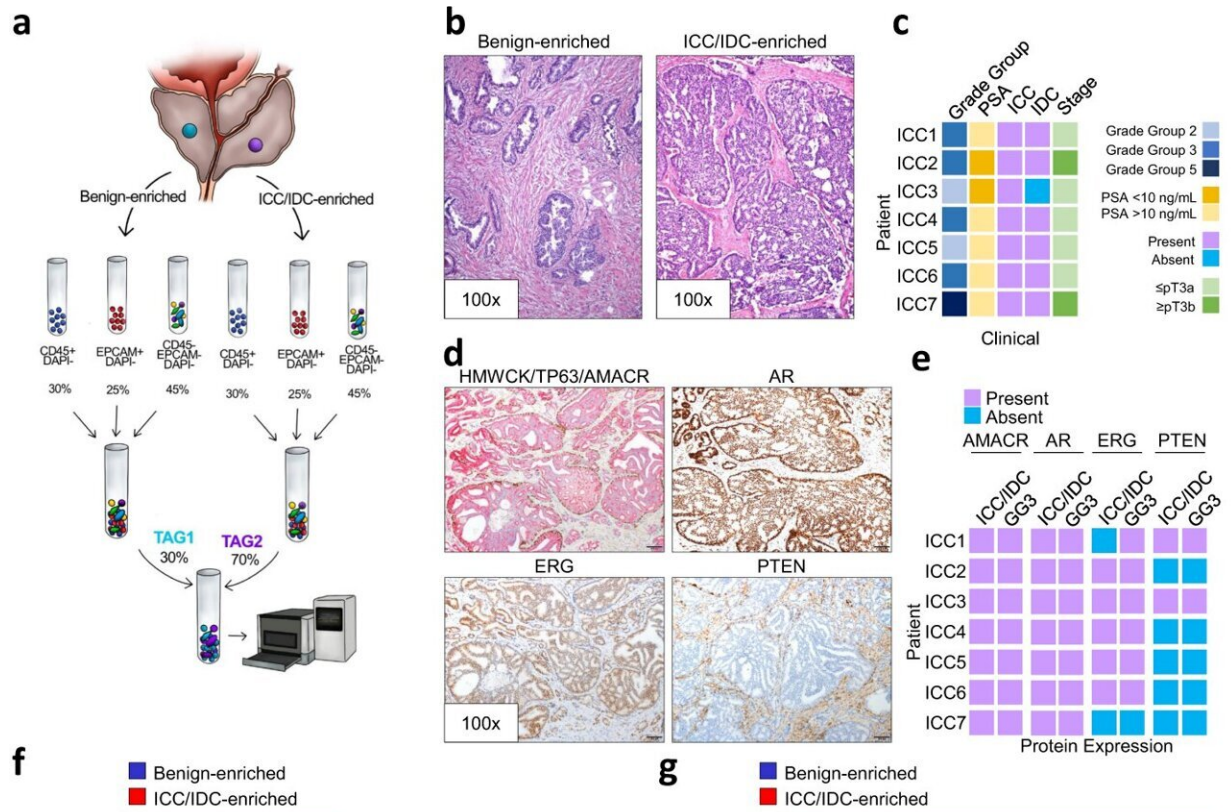


Study reveals pathways for aggressive prostate cancer subtype

October 27 2022



ScRNAseq of ICC/IDC-enriched and benign-enriched prostate. **a** Schematic of scRNAseq protocol of ICC/IDC-enriched and benign-enriched prostate. **b** Representative rapid frozen H&E of benign-enriched and ICC/IDC-enriched prostate isolated for scRNAseq at 100x, bar = 200 μm, (n = 7 biologically independent samples). This image and the six additional representative images are in Supplementary Fig. 1. **c** Patient clinical characteristics. **d** Representative HMWCK (High Molecular Weight Cytokeratin), TP63, AMACR, AR, ERG, and PTEN expression by IHC on patient FFPE prostate tissue from RP at 100x,

bar = 100 μ m, (n = 7 biologically independent samples). This image and the six additional representative images are in Supplementary Fig. 2a. e AMACR, AR, ERG, and PTEN expression by IHC per patient. f, g The number (f) and percent (g) of benign-enriched and ICC/IDC-enriched cells per patient. h, i Unsupervised graph-based clustering of all samples visualized by UMAP delineated by cluster (h) and cell-type (i). j Bubble plot of representative cell-type specific markers across all clusters. Credit: *Nature Communications* (2022). DOI: 10.1038/s41467-022-33780-1

Cribriform prostate cancer is an aggressive subtype of the disease characterized by its histology, but little is known about its molecular pathways. Research from Vanderbilt-Ingram Cancer Center has revealed new information about these pathways, including potential therapies.

The findings, which are the result of single-cell RNA-sequencing, were published in *Nature Communications*. The research was conducted in the lab of Paula Hurley, Ph.D., associate professor of Medicine and Urology.

The researchers observed an interplay between the inherent properties of cancer cells and microenvironmental factors that contribute to this aggressive subtype of prostate cancer. The upregulation of MYC-induced genes as well as the role of the NF κ B gene via the TNF α signaling pathway were associated with cribriform prostate cancer. Several molecules were also observed, including some that have implications for therapeutic opportunities.

Men who have cribriform morphology detected after prostate surgery are more likely to experience metastatic recurrence and mortality, so precision therapies are needed.

"Our goal was to identify dysregulated factors associated with cribriform

prostate cancer that likely contribute to its aggressive nature and could potentially serve as therapeutic targets," said Hurley, the study's corresponding author.

The researchers performed single-cell RNA-sequencing on prostate tissue with cribriform morphologies donated by seven patients. One of the molecules associated with the aggressive subtype included PSMA/FOLH1. Radionuclide therapies that utilize a small molecule targeting PSMA have been shown to have [clinical benefit](#) in numerous [clinical trials](#) for metastatic castration-resistant prostate cancer. Pluvicto now has FDA approval for [advanced prostate cancer](#) and is being offered at Vanderbilt.

A variety of other PSMA-directed therapies are evolving and show promise; an exciting study working to explore radioligands earlier in prostate cancer is currently enrolling patients at Vanderbilt. The in depth understanding of this aggressive subtype also suggests other classes of therapy, now being studied in clinical trials, could be useful in targeting molecules expressed in cribriform prostate cancer.

"Our study offers molecular and cellular insights into this aggressive subtype of [prostate cancer](#), which we hope will ultimately impact [patient care](#)," said the study's lead author, Hong Yuen Wong, Ph.D., research assistant professor of Medicine.

More information: Hong Yuen Wong et al, Single cell analysis of cribriform prostate cancer reveals cell intrinsic and tumor microenvironmental pathways of aggressive disease, *Nature Communications* (2022). [DOI: 10.1038/s41467-022-33780-1](https://doi.org/10.1038/s41467-022-33780-1)

Provided by Vanderbilt University Medical Center

Citation: Study reveals pathways for aggressive prostate cancer subtype (2022, October 27)
retrieved 26 December 2022 from

<https://medicalxpress.com/news/2022-10-reveals-pathways-aggressive-prostate-cancer.html>

This document is subject to copyright. Apart from any fair dealing for the purpose of private study or research, no part may be reproduced without the written permission. The content is provided for information purposes only.