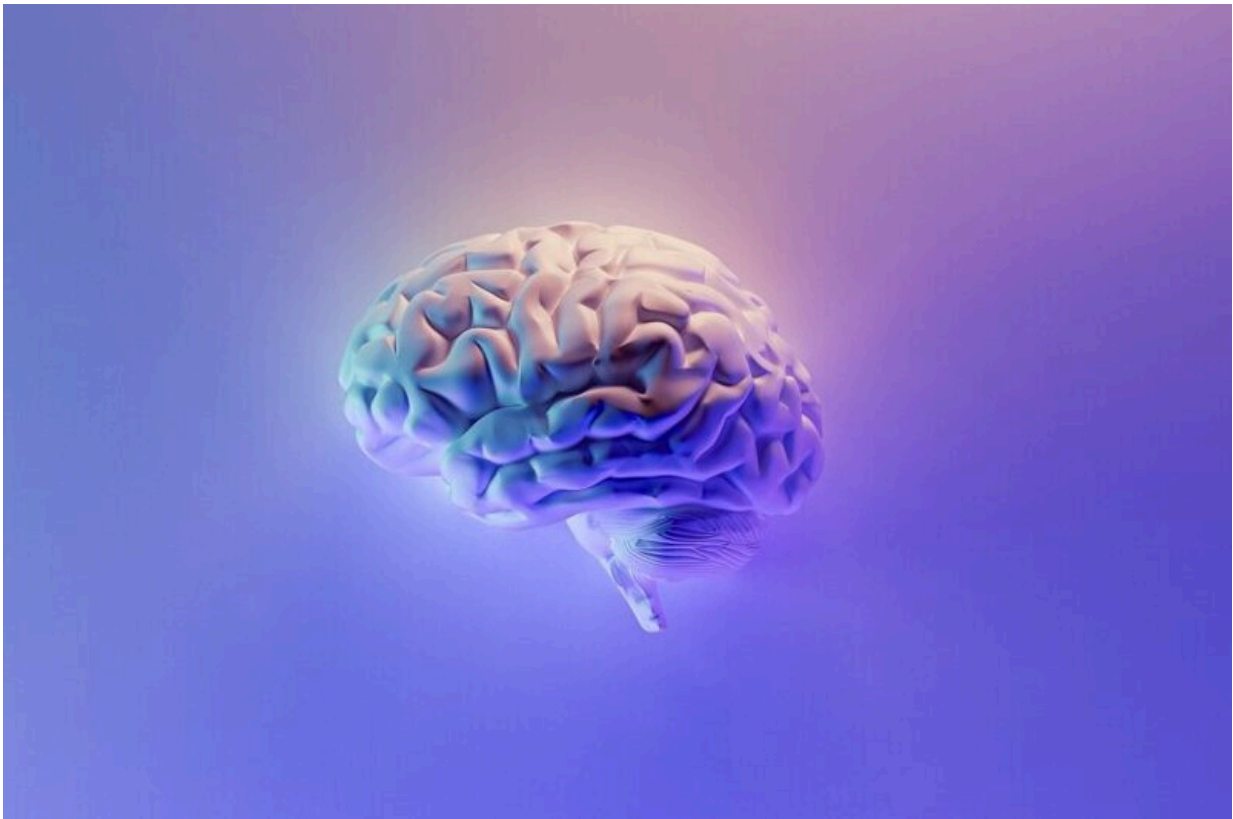


Protein shapes could indicate Parkinson's disease

November 25 2022, by Peter Rüegg



Credit: Unsplash/CC0 Public Domain

ETH Zurich researchers have found that a set of proteins have different shapes in the spinal fluid of healthy individuals and Parkinson's patients. These could be used in the future as a new type of biomarker for this

disease.

Many human diseases can be detected and diagnosed using biomarkers in blood or other [body fluids](#). Parkinson's disease is different: to date, there is no such [biomarker](#) being used in the clinic to indicate this neurodegenerative disease.

A team led by ETH Zurich Professor Paola Picotti could now help to close this gap. In a study just published in the journal *Nature Structural and Molecular Biology*, the researchers present 76 proteins that might serve as biomarkers for the detection of Parkinson's disease.

Different protein structure

What makes this study special is that while the potential biomarker proteins are found in both healthy and diseased individuals, their molecules are present in different shapes (or structures) in each of the two groups. It is not the presence of certain proteins that indicates the disease, but rather the shape they have assumed. This is the first time that scientists have shown that an analysis of the structures of all proteins in a body fluid can identify potential biomarkers for disease.

The next step will be to thoroughly test the markers found and verify them using larger groups of patients. That means these candidates are not yet available for clinical diagnoses. "But from what we've seen so far, they're actually a very strong indicator for the disease. So I'm confident that this idea of structural biomarkers will bear out," says Natalie de Souza, senior scientist in Paola Picotti's group and one of the study's co-authors.

Measuring structural changes

In their study, the ETH Zurich researchers examined the cerebrospinal

fluid of 50 healthy individuals and 50 Parkinson's patients. The sample material was provided to them by Dutch clinicians.

To search for biomarkers, the scientists used a specific method for measuring the proteome (i.e. the totality of all proteins in a sample), called LiP-MS, which can measure structural changes in proteins and reveal where exactly the changes are located. Conventional proteome measurements tend to record only the different types of [protein](#) and their amounts, but not structural changes.

Since the structure of proteins is closely linked to their functions (or, indeed, dysfunctions), the researchers hypothesized that people with Parkinson's and healthy individuals will exhibit different shapes of some proteins.

The present study marks the first time that the researchers have successfully applied the method to a disease.

Sharpening analysis further

In subsequent steps, the researchers want to further improve the LiP-MS method to amplify the biomarker signal and thus increase the sensitivity with which the disease can be detected. Moreover, the scientists would like to test the new biomarkers to assess how specifically they detect Parkinson's disease or whether there might be overlap with other neurodegenerative diseases such as Alzheimer's disease. In future, the researchers also want to use their method to determine subtypes of Parkinson's disease and make more accurate predictions about the course of the disease.

Exactly what clinically useful diagnostics this might lead to is still uncertain. De Souza estimates that a future testing strategy could be based on antibodies that would distinguish between healthy and diseased

protein structures. Making regular use of mass spectrometers in a [clinical setting](#) is in principle possible, she says, but would be a big challenge.

More information: Marie-Therese Mackmull et al, Global, in situ analysis of the structural proteome in individuals with Parkinson's disease to identify a new class of biomarker, *Nature Structural & Molecular Biology* (2022). [DOI: 10.1038/s41594-022-00837-0](https://doi.org/10.1038/s41594-022-00837-0)

Provided by ETH Zurich

Citation: Protein shapes could indicate Parkinson's disease (2022, November 25) retrieved 17 December 2022 from <https://medicalxpress.com/news/2022-11-protein-parkinson-disease.html>

This document is subject to copyright. Apart from any fair dealing for the purpose of private study or research, no part may be reproduced without the written permission. The content is provided for information purposes only.