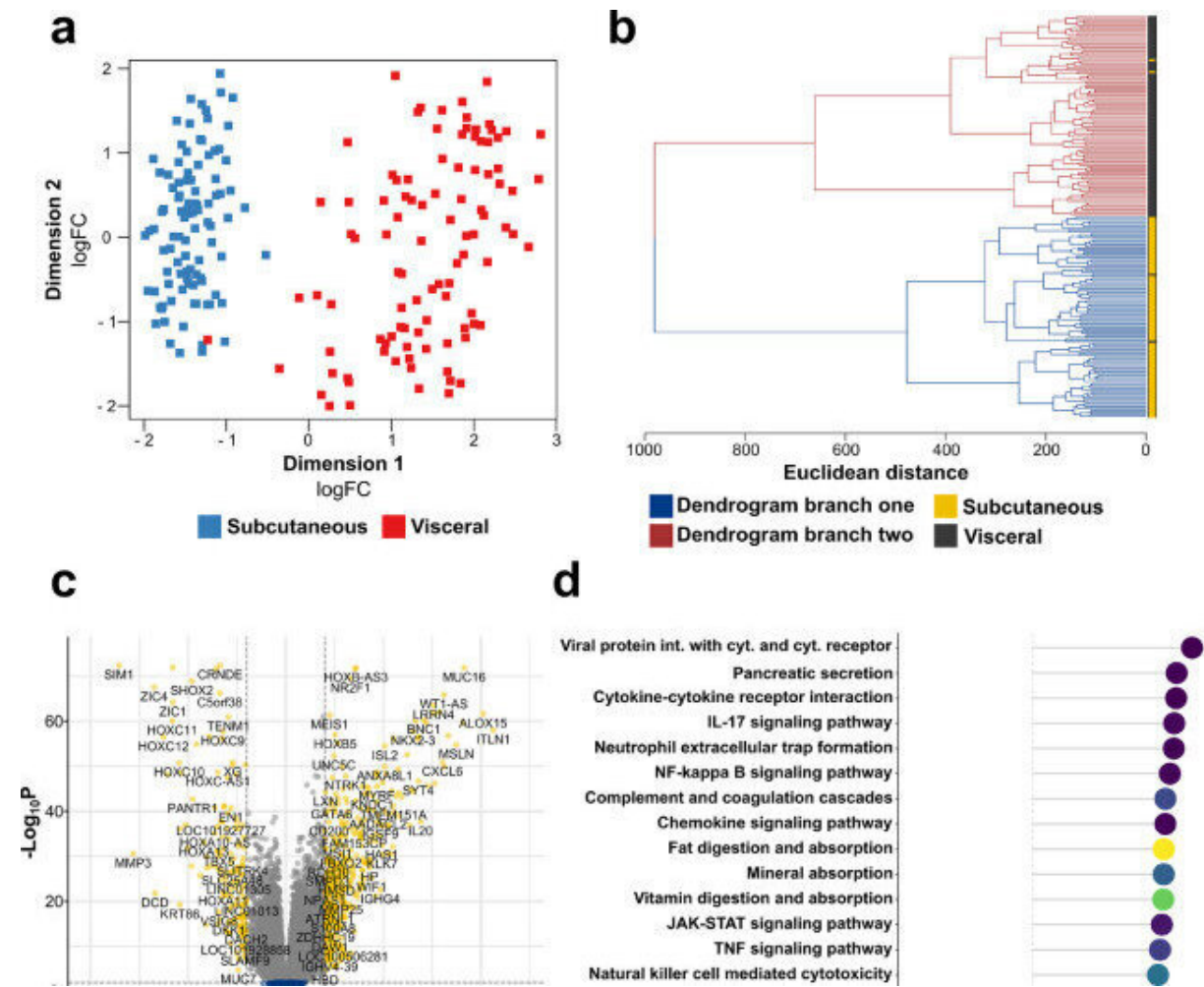


Study examines why overweight people are more susceptible to illness

November 29 2022



SAT and VAT are characterized by different transcriptomic signatures. (a) MDS plot displaying the first two dimensions of the data (n = 99). (b) Hierarchical clustering of SAT and VAT samples based on euclidean sample distances (n = 99). (c) Volcano plot showing differentially expressed genes between SAT

and VAT (n = 99). (d) Dotplot displaying the top 20 enriched KEGG pathways with an adjusted p-value

Citation: Study examines why overweight people are more susceptible to illness (2022, November 29) retrieved 21 January 2023 from <https://medicalxpress.com/news/2022-11-overweight-people-susceptible-illness.html>

This document is subject to copyright. Apart from any fair dealing for the purpose of private study or research, no part may be reproduced without the written permission. The content is provided for information purposes only.